

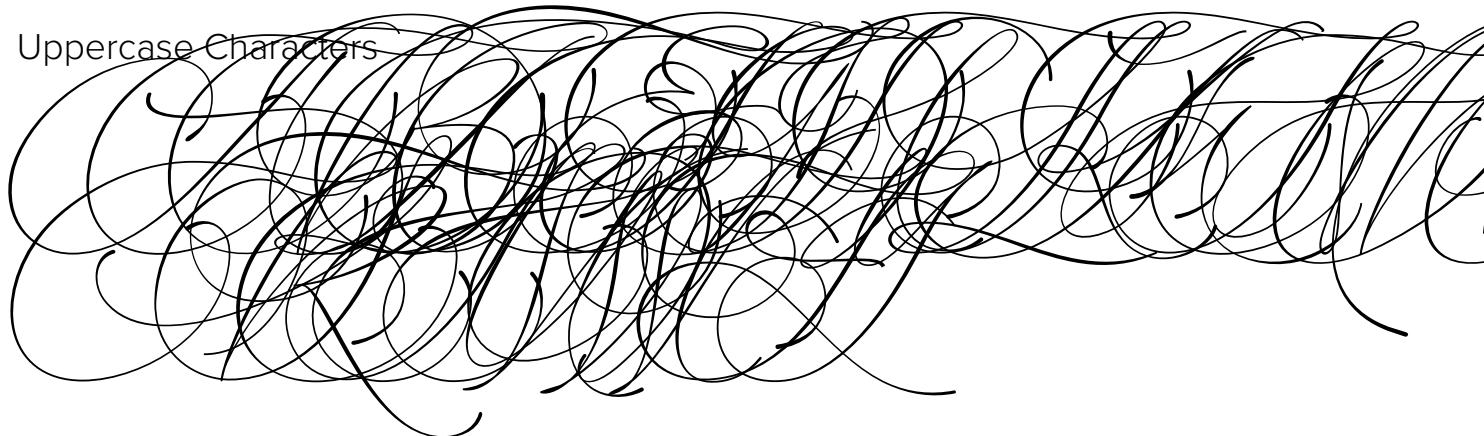


FONT SPECIFICATION

Absolutely Adorable Sophia

Sophia EXT - Regular

Uppercase Characters



Lowercase Characters

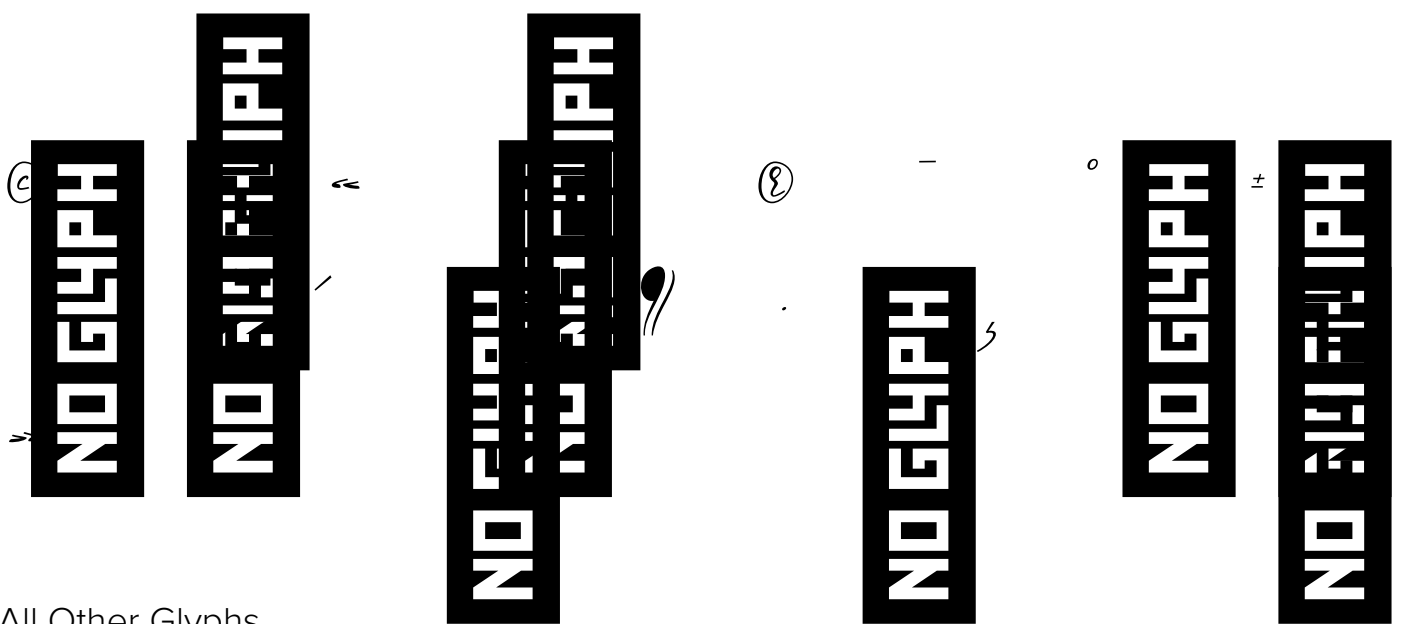
a b c d e f g h i j k l m n o p q
r s t u v w x y z

Numbers

0 1 2 3 4 5 6 7 8 9

Punctuation and Symbols

! " # \$ % & ' ()
* + , - . : ; < =
> ? [\] ^ _ { |
} ¡ ¢ £ ¤ ¥ ¦ § ¨



All Other Glyphs

À Á Â Ã Ä Å Æ Ç È É Ê Ë

Ì Í Î Ï Ñ Ò Ó Ô Õ Ö × Ø Ù Ú Û Ü

Ý Þ ß à á â ã ä å æ ç è é ê ë ì

í î ï ð ñ ò ó ô õ ö ÷ ø ù ú û

ä å æ ç è é ê ë ì

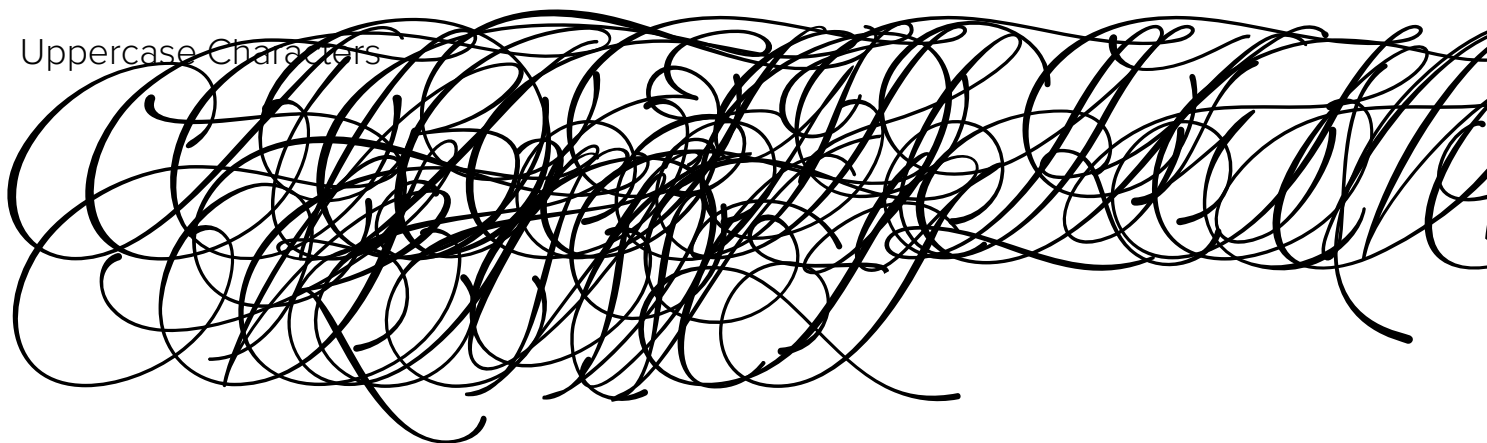
í î ï ð ñ ò ó ô õ

ö ÷ ø ù ú û ü ý ß

ÿ

Sophia EXT Bold - Regular

Uppercase Characters



Lowercase Characters

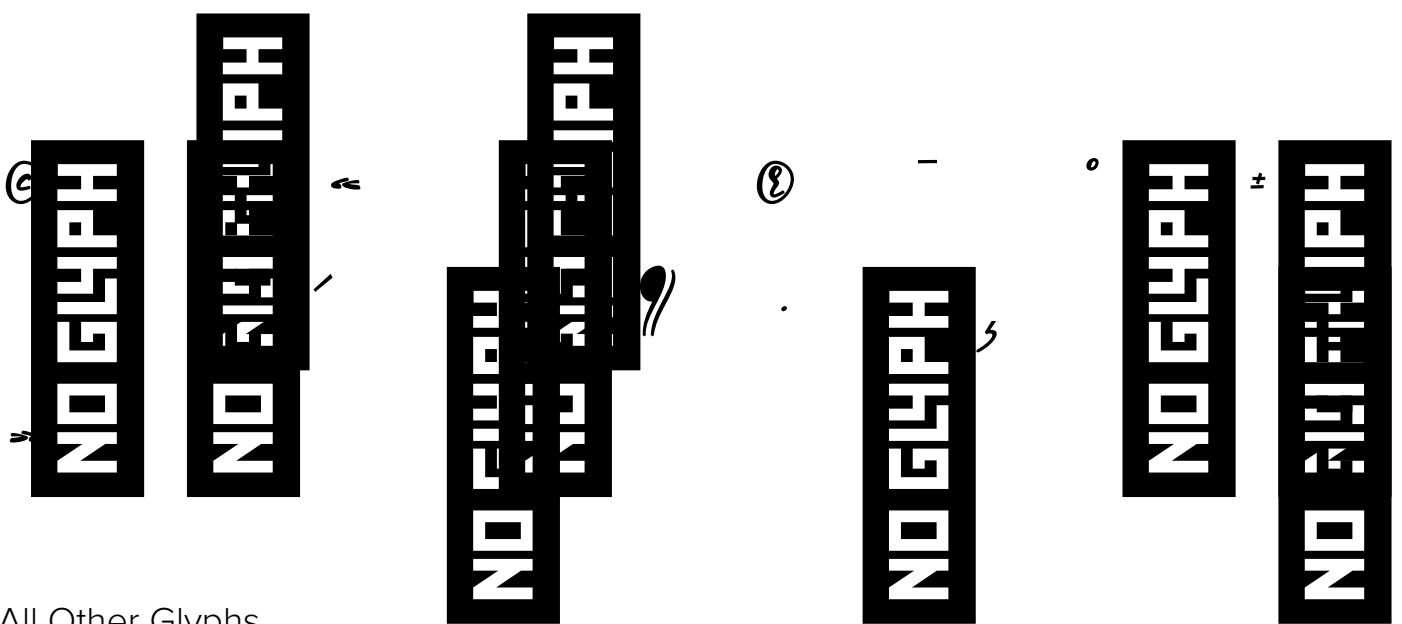
a b c d e f g h i j k l m n o p q
r s t u v w x y z

Numbers

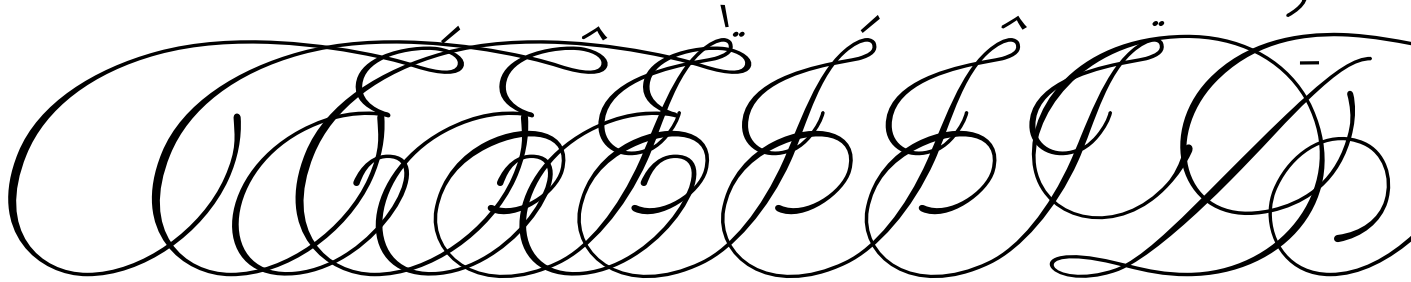
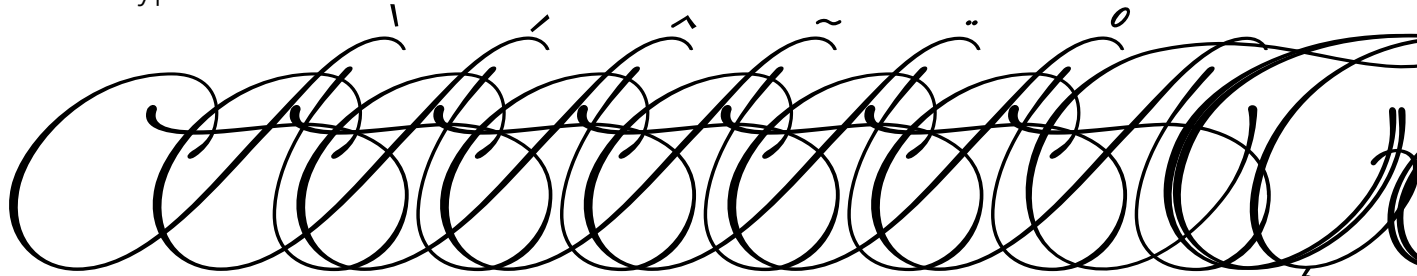
0 1 2 3 4 5 6 7 8 9

Punctuation and Symbols

! " # \$ % & ' ()
* + , - . : ; < =
> ? [\] ^ _ { |
} ¡ ¢ £ ¤ ¥ ¦ § ¨



All Other Glyphs



ä á æ ç è é ê ë ì

í î ï ð ñ ò ó ô õ

ä å æ ù ú û ü ý ß

ÿ

Sophia Script Bold - Regular

Uppercase Characters



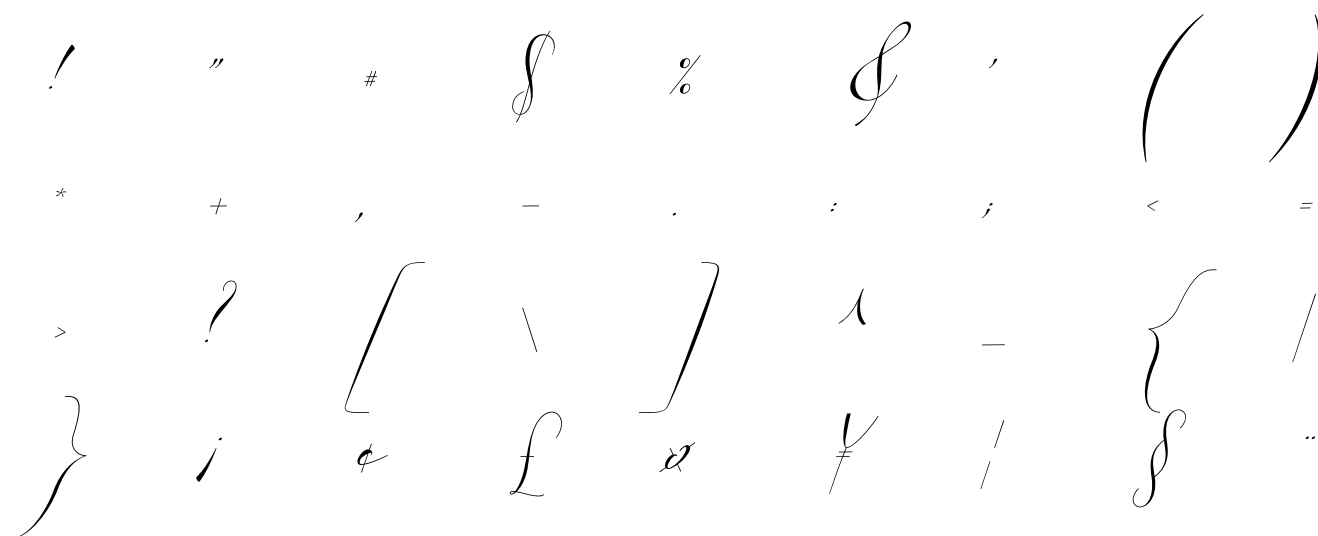
Lowercase Characters

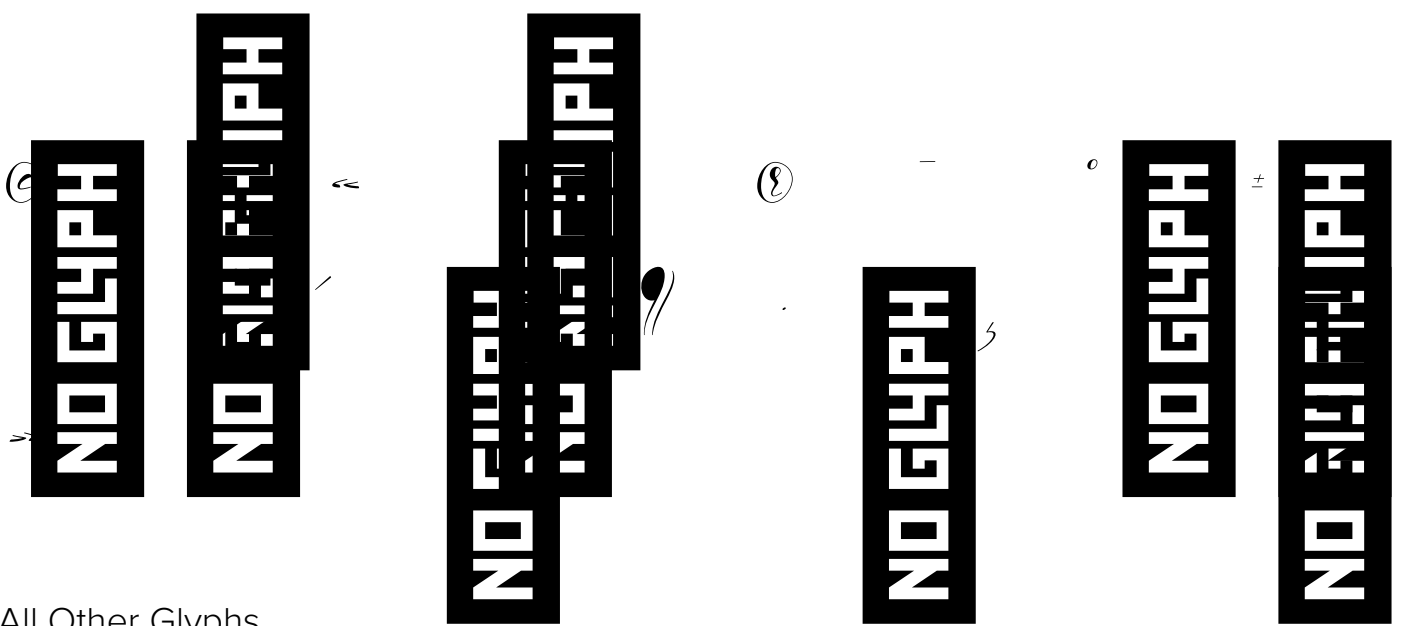


Numbers

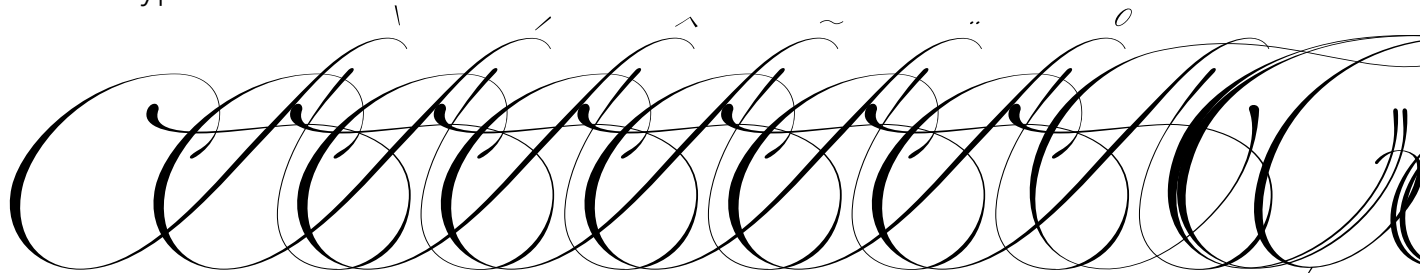


Punctuation and Symbols





All Other Glyphs



ä á æ ç è é ê ë ì

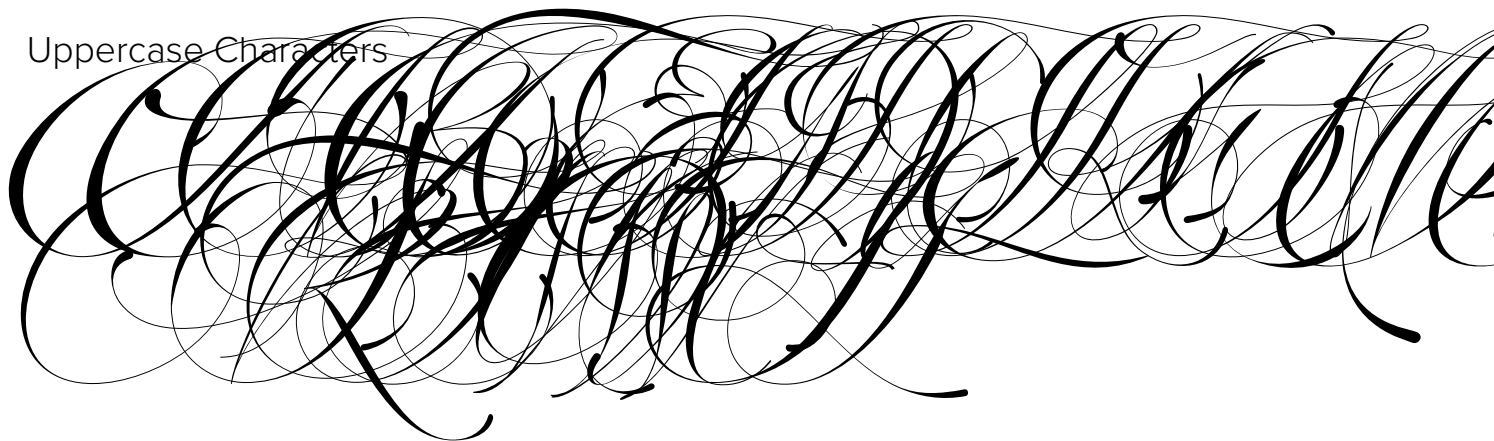
é ê ë ð ñ ò ó ô õ

ö ÷ ø ù ú û ü ý ß

ÿ

Sophia Script ExtraBold - Regular

Uppercase Characters



Lowercase Characters

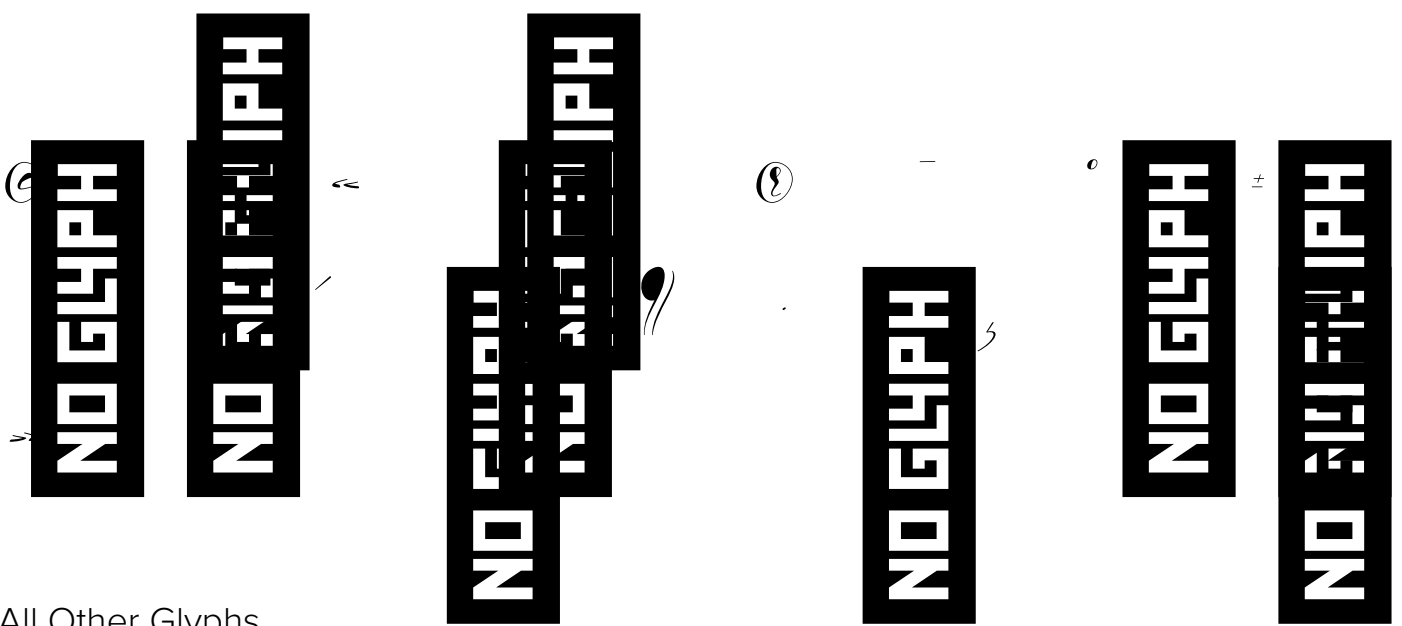
a b c d e f g h i j k l m n o p q
r s t u v w x y z

Numbers

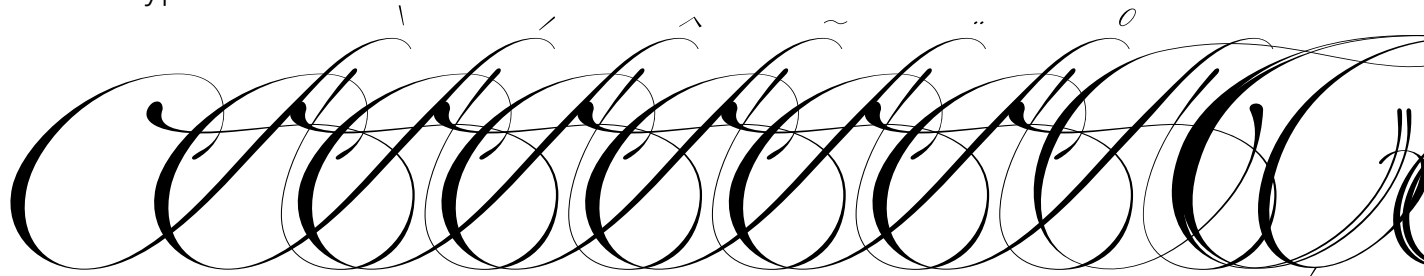
0 1 2 3 4 5 6 7 8 9

Punctuation and Symbols

! " # \$ % & ' ()
* + , - . : ; < =
> ? [\] ^ _ { |
} ¡ ¢ £ ¤ ¥ ¦ § ¨



All Other Glyphs



ä å æ ç è é ê ë ì

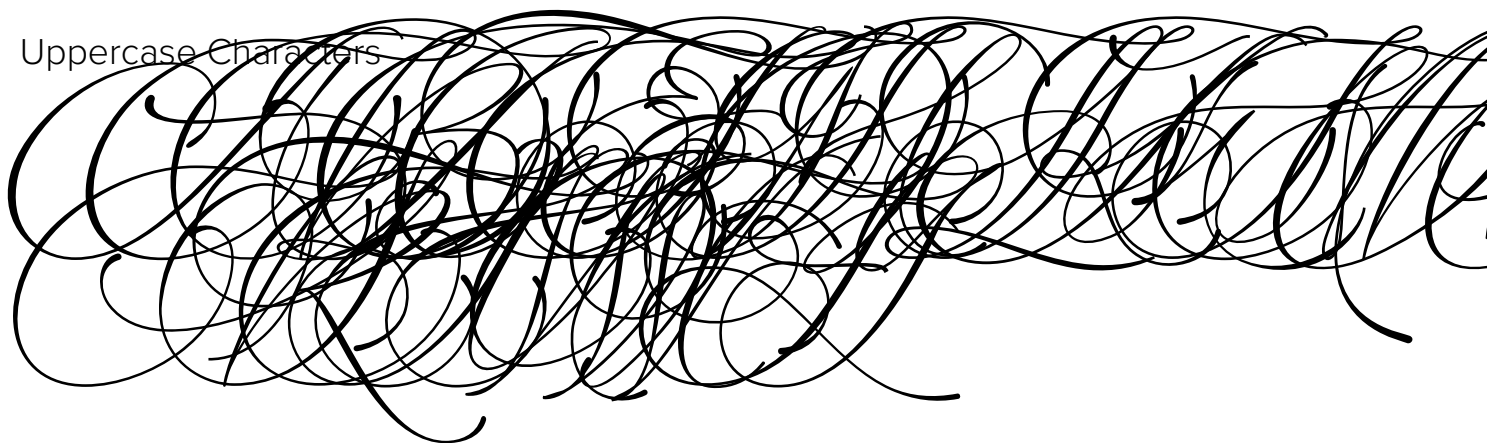
é ê ë ð ñ ò ó ô õ

ö ÷ ø ù ú û ü ý ß

ÿ

Sophia EXT Medium - Regular

Uppercase Characters



Lowercase Characters

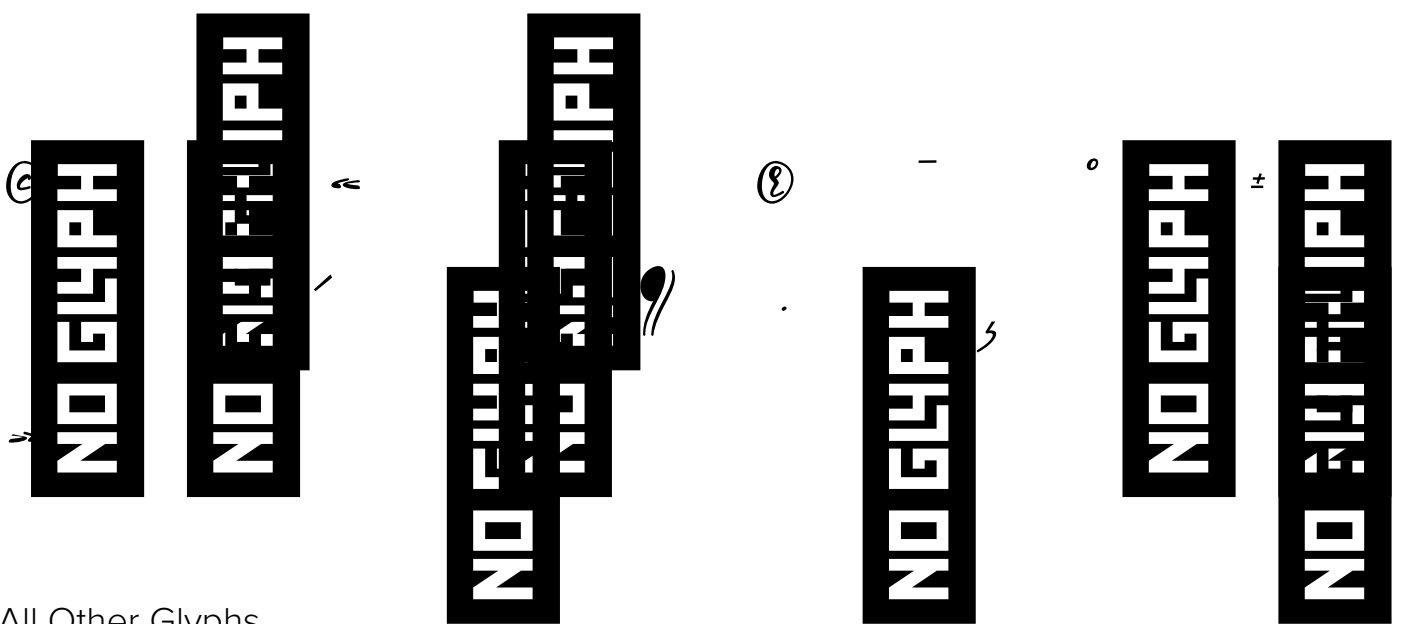
a b c d e f g h i j k l m n o p q
r s t u v w x y z

Numbers

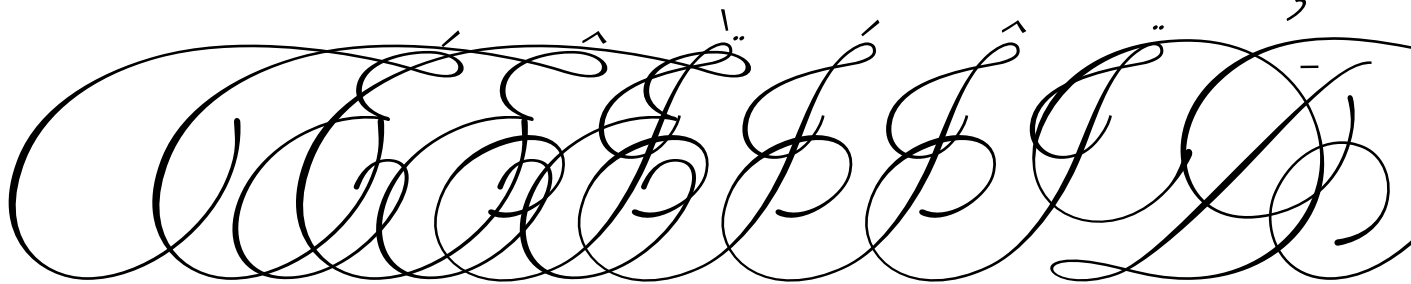
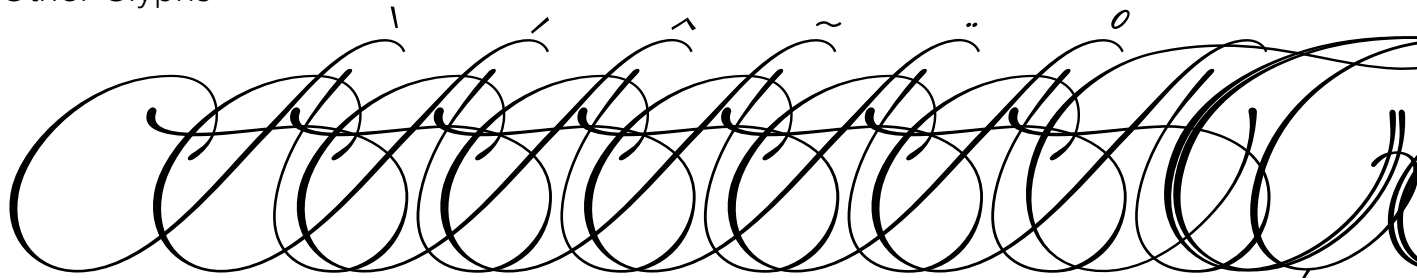
0 1 2 3 4 5 6 7 8 9

Punctuation and Symbols

! " # \$ % & ' ()
* + , - . : ; < =
> ? [\] ^ _ { |
} ¡ ¢ £ ¤ ¥ ¦ § ¨



All Other Glyphs



ä á æ ç è é ê ë ì

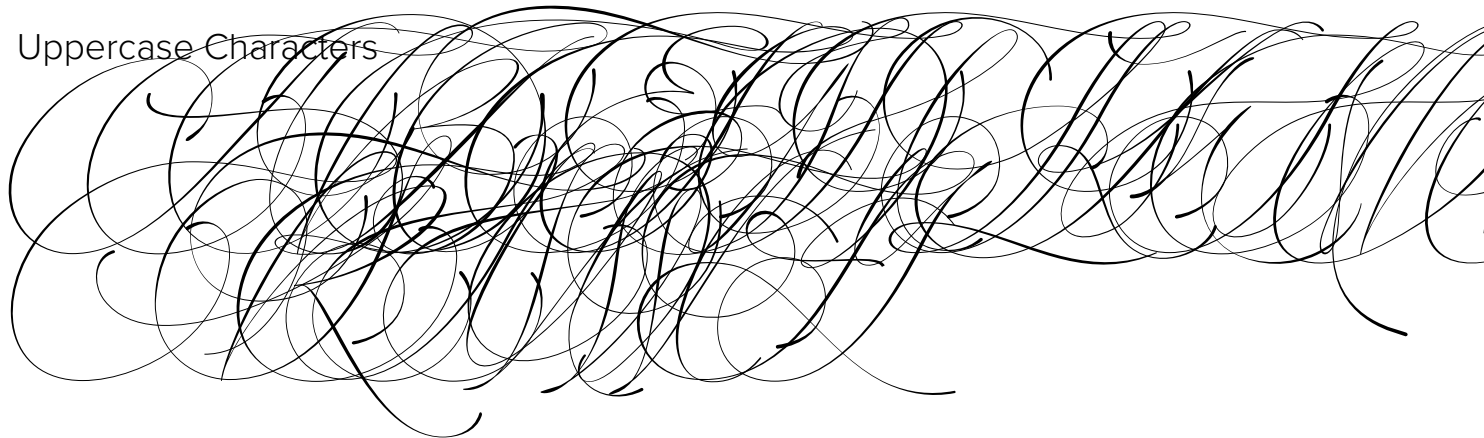
í î ï ð ñ ò ó ô õ

ö ÷ ø ù ú û ü ý ß

ÿ

Sophia Script - Regular

Uppercase Characters



Lowercase Characters

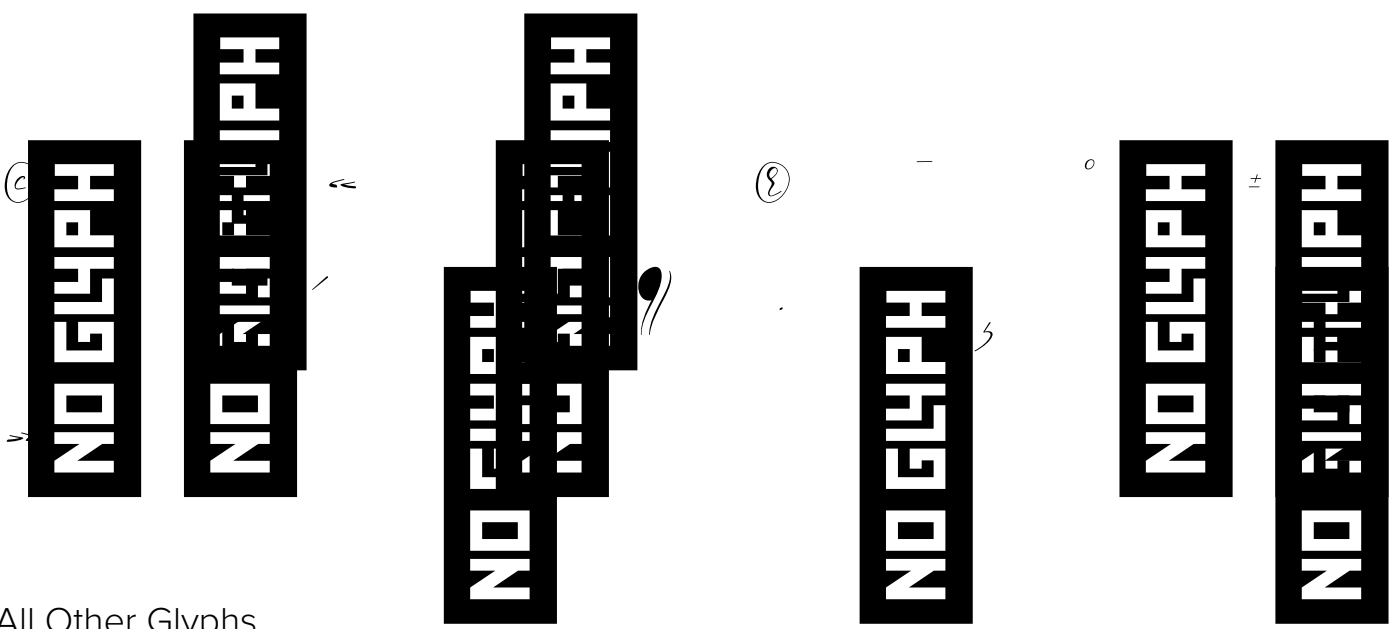
a b c d e f g h i j k l m n o p q
r s t u v w x y z

Numbers

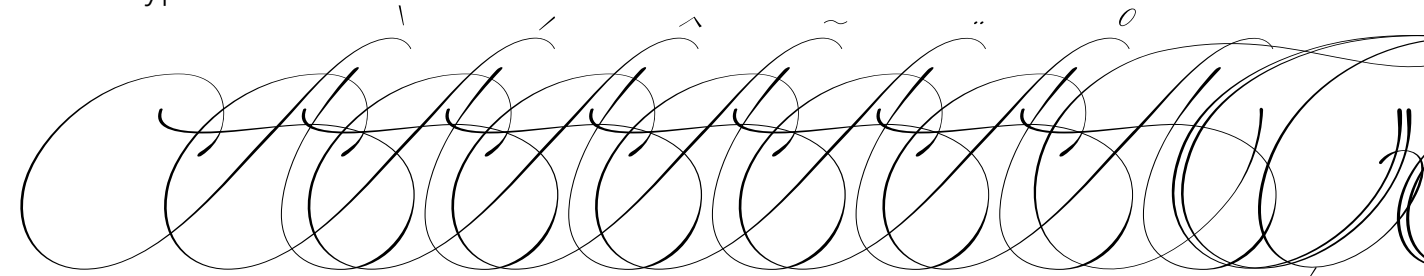
0 1 2 3 4 5 6 7 8 9

Punctuation and Symbols

! " # \$ % & ' ()
* + , - . : ; < =
> ? [\] ^ _ { |
} ¡ ¢ £ ¤ ¥ ¦ § ¨



All Other Glyphs



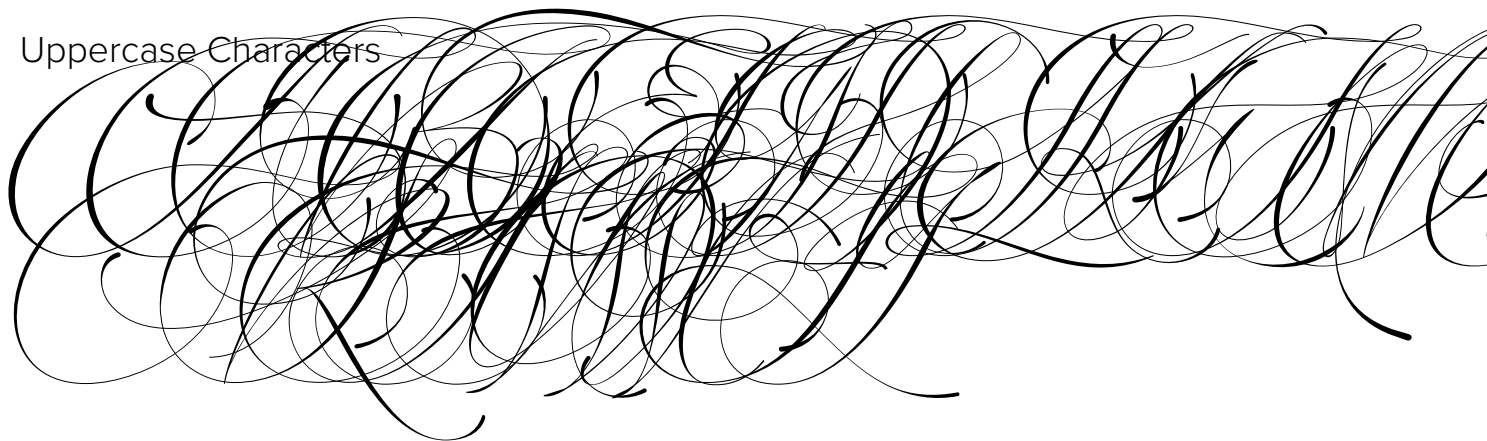
í î ï ð ñ ò ó ô õ

ö ÷ ø ù ú û ü ý ß

ÿ

Sophia Script Medium - Regular

Uppercase Characters



Lowercase Characters

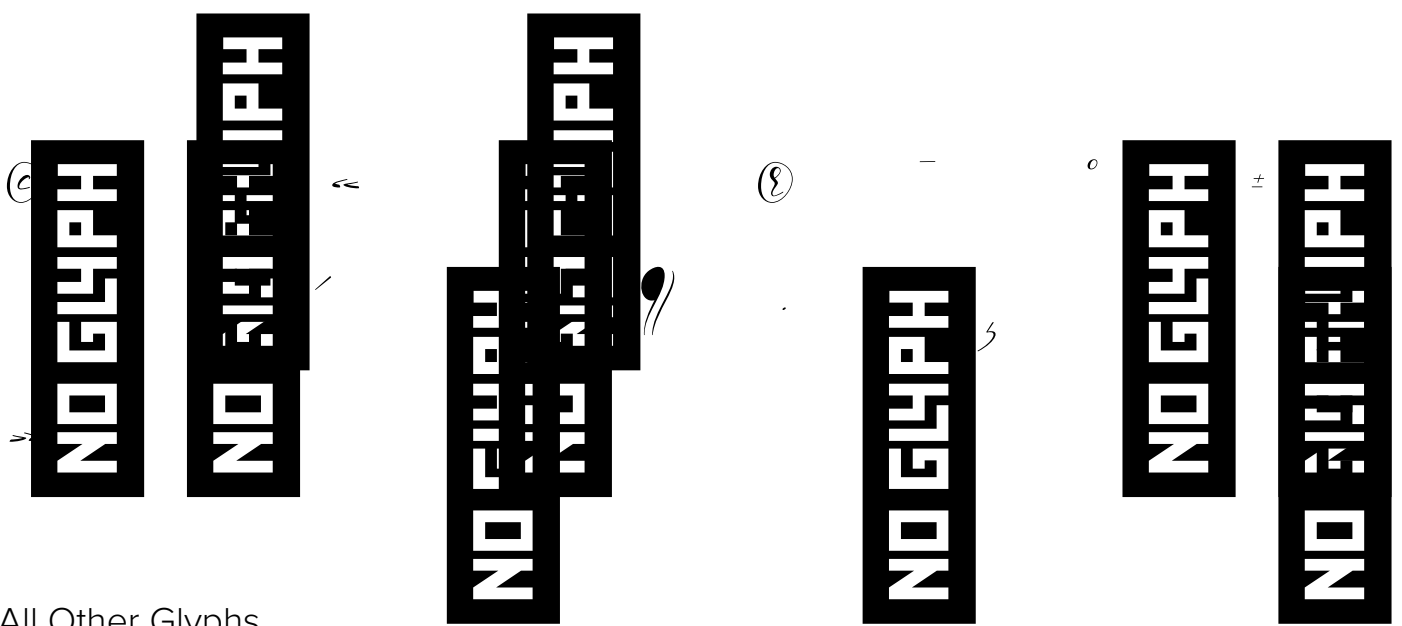
a b c d e f g h i j k l m n o p q
r s t u v w x y z

Numbers

0 1 2 3 4 5 6 7 8 9

Punctuation and Symbols

! " # \$ % & ' ()
* + , - . : ; < =
> ? [\] ^ _ { |
} ¡ ¢ £ ¤ ¥ ¦ § ¨



All Other Glyphs



ä å æ ç è é ê ë ì

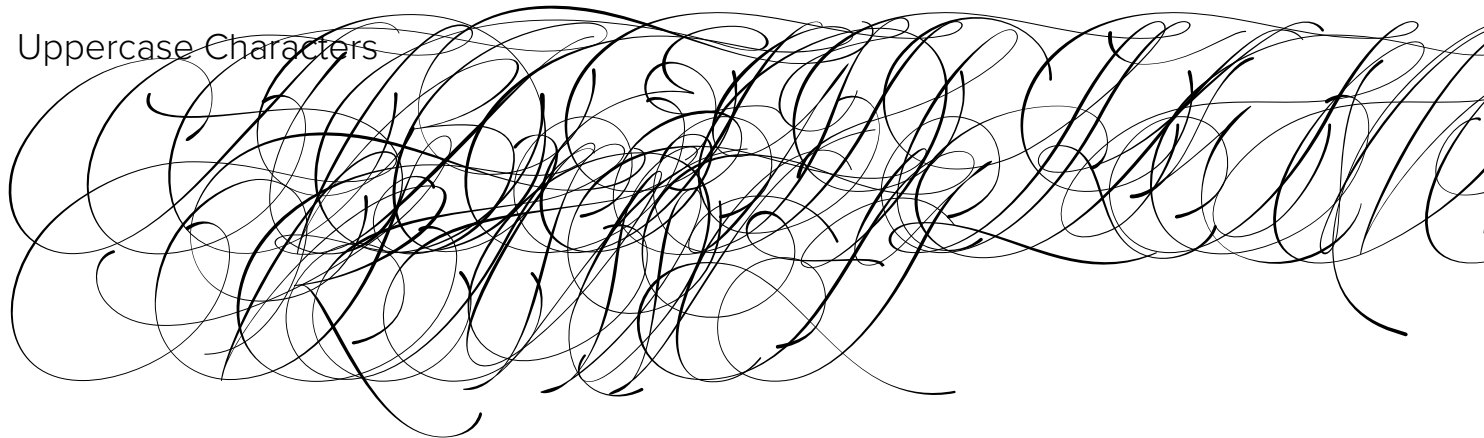
í î ï ð ñ ò ó ô õ

ö ÷ ø ù ú û ü ý ß

ÿ

Sophia Script 1 - Regular

Uppercase Characters



Lowercase Characters

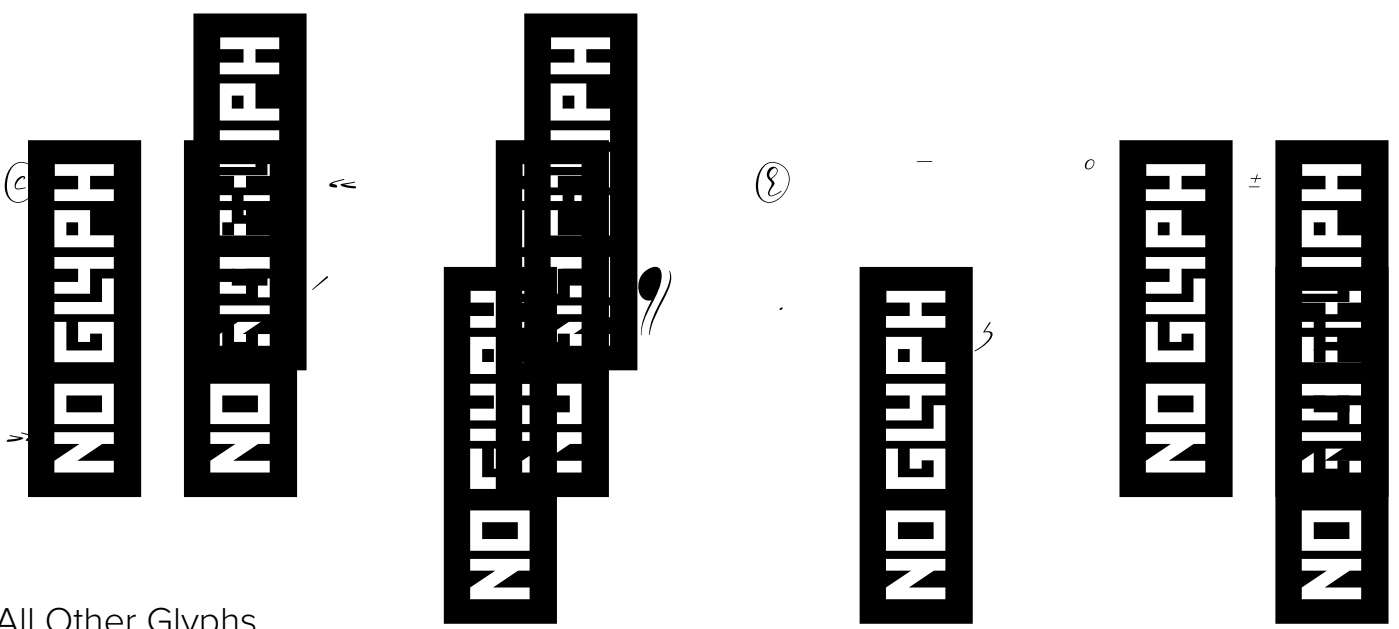
a b c d e f g h i j k l m n o p q
r s t u v w x y z

Numbers

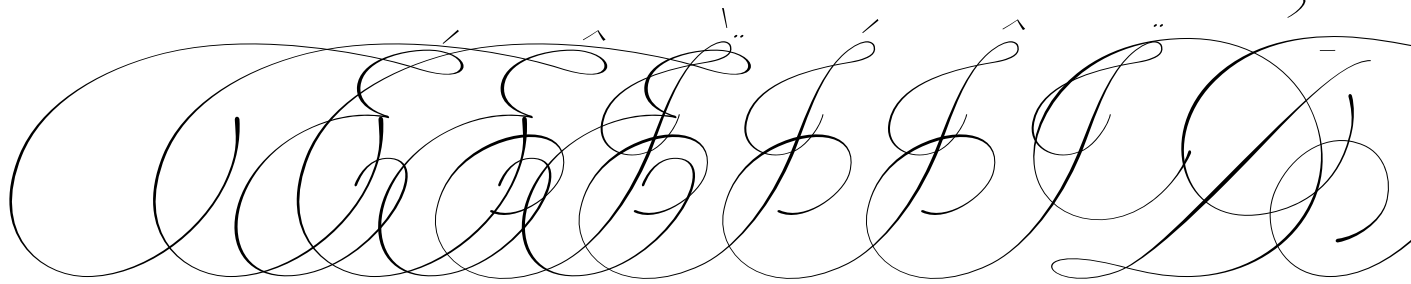
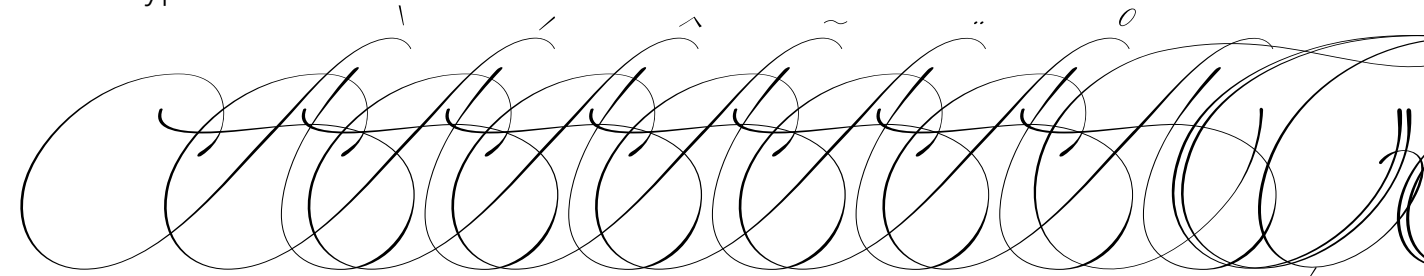
0 1 2 3 4 5 6 7 8 9

Punctuation and Symbols

! " # \$ % & ' ()
* + , - . : ; < =
> ? [\] ^ _ { |
} ¡ ¢ £ ¤ ¥ ¦ § ¨



All Other Glyphs



ä á â ã ä å æ ç è é ê ë ì

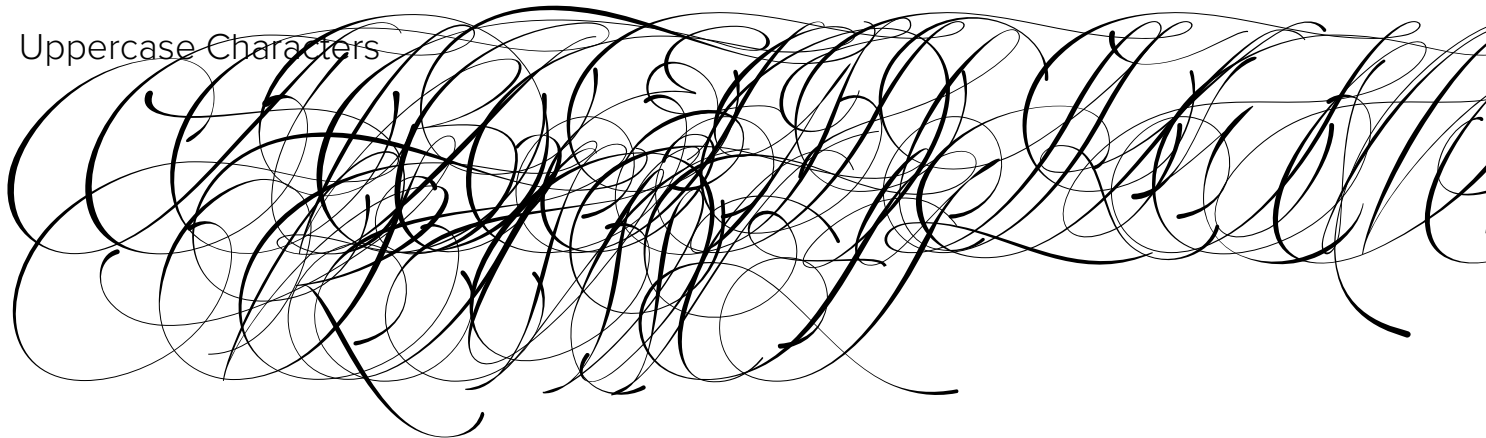
í î ï ð ñ ò ó ô õ

ö ÷ ø ù ú û ü ý ß

ÿ

Sophia Script 2 Medium - Regular

Uppercase Characters



Lowercase Characters

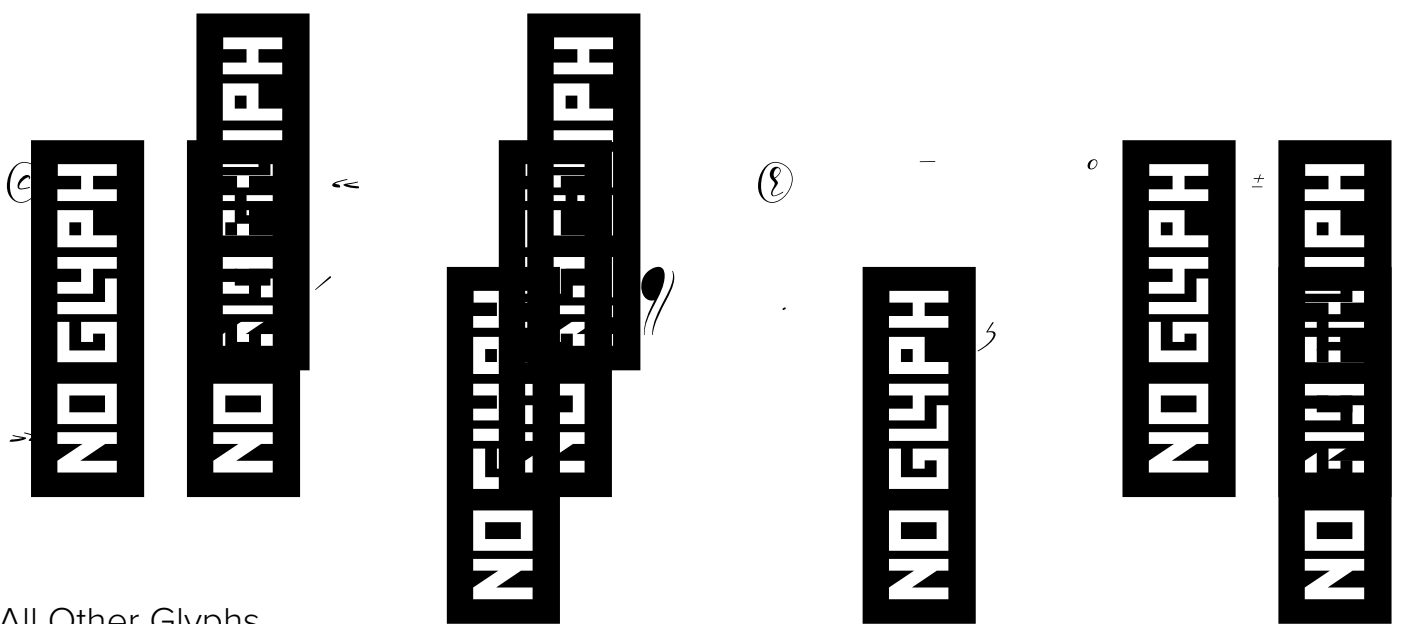
a b c d e f g h i j k l m n o p q
r s t u v w x y z

Numbers

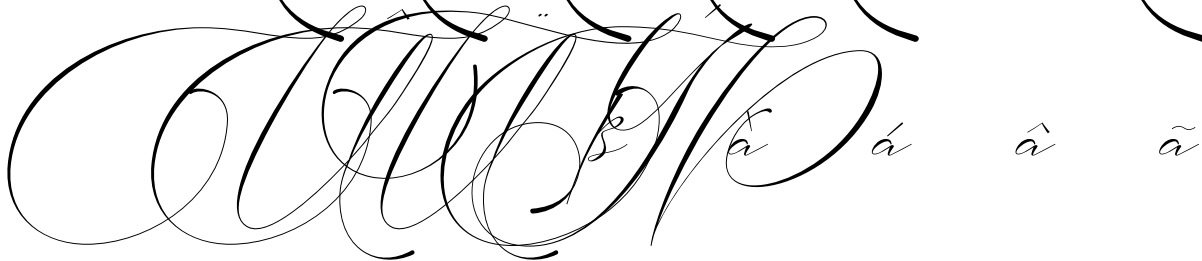
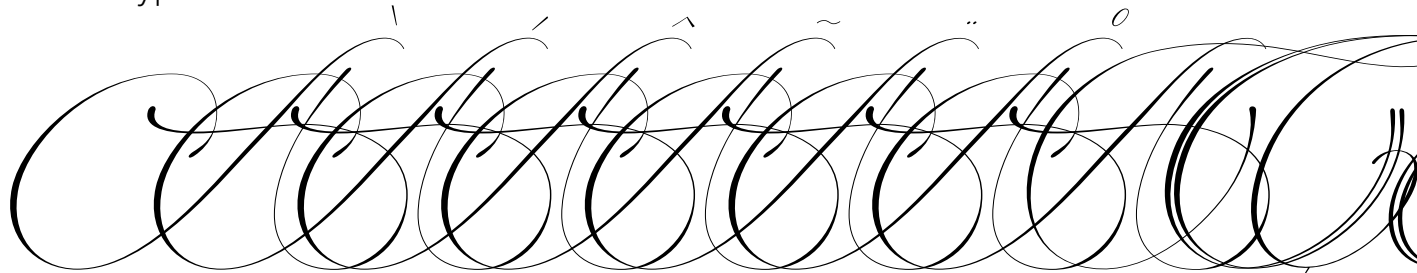
0 1 2 3 4 5 6 7 8 9

Punctuation and Symbols

! " # \$ % & ' ()
* + , - . : ; < =
> ? [\] ^ _ { |
} ¡ ¢ £ ¤ ¥ ¦ § ¨



All Other Glyphs



ä á æ ç è é ê ë ì

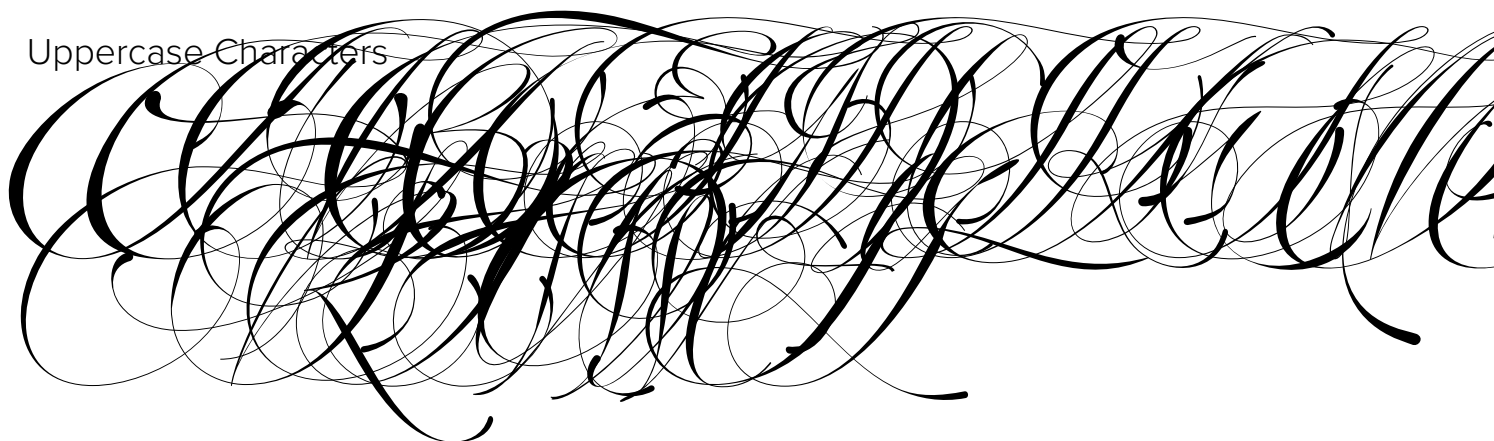
í î ï ð ñ ò ó ô õ

ö ÷ ø ù ú û ü ý ß

ÿ

Sophia Script 4 ExtraBold - Regular

Uppercase Characters



Lowercase Characters

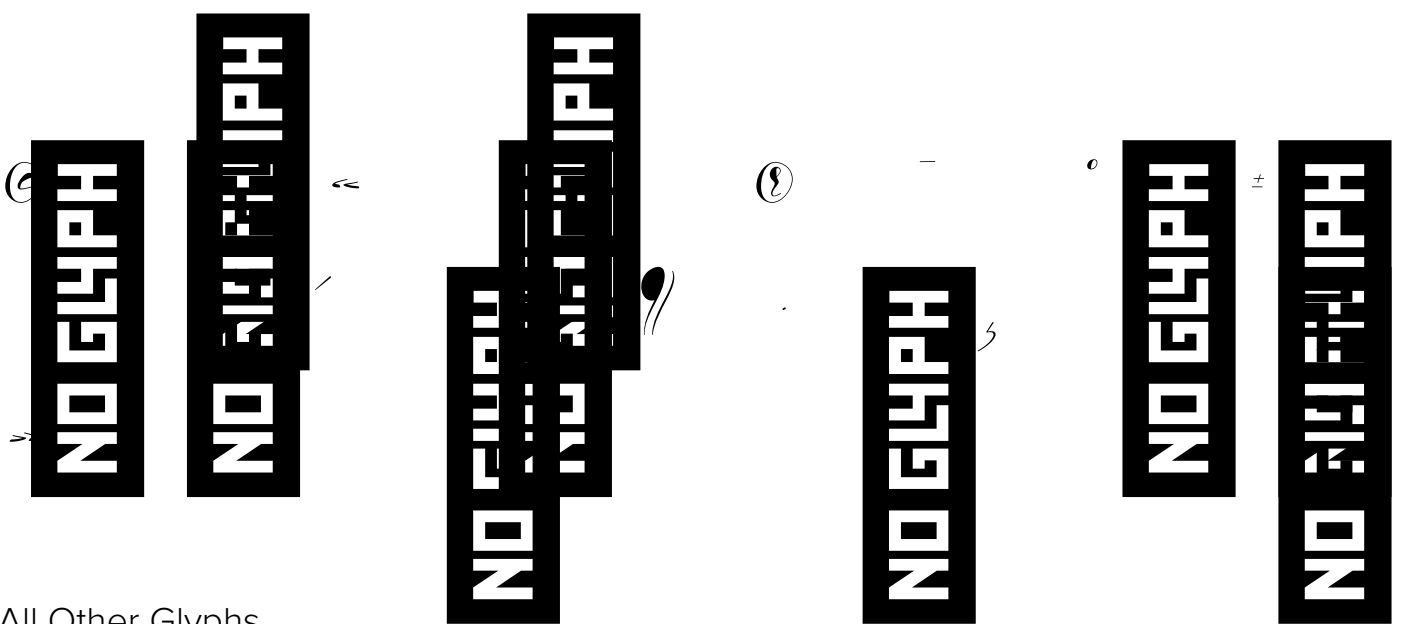
a b c d e f g h i j k l m n o p q
r s t u v w x y z

Numbers

0 1 2 3 4 5 6 7 8 9

Punctuation and Symbols

! " # \$ % & ' ()
* + , - . : ; < =
> ? [\] ^ _ { |
} ¡ ¢ £ ¤ ¥ ¦ § ¨



All Other Glyphs



ä å æ ç è é ê ë ì

é ê ë ð ñ ò ó ô õ

ö ÷ ø ù ú û ü ý ß

ÿ

Sophia Script 3 Bold - Regular

Uppercase Characters



Lowercase Characters

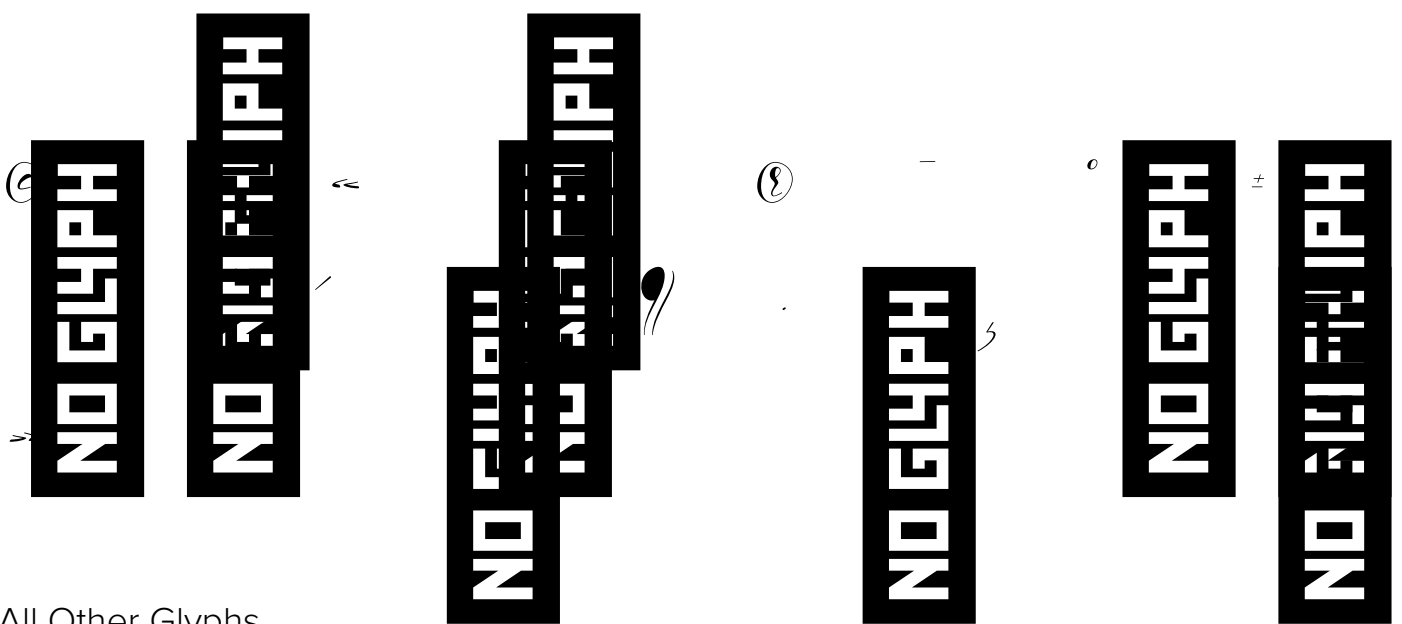
a b c d e f g h i j k l m n o p q
r s t u v w x y z

Numbers

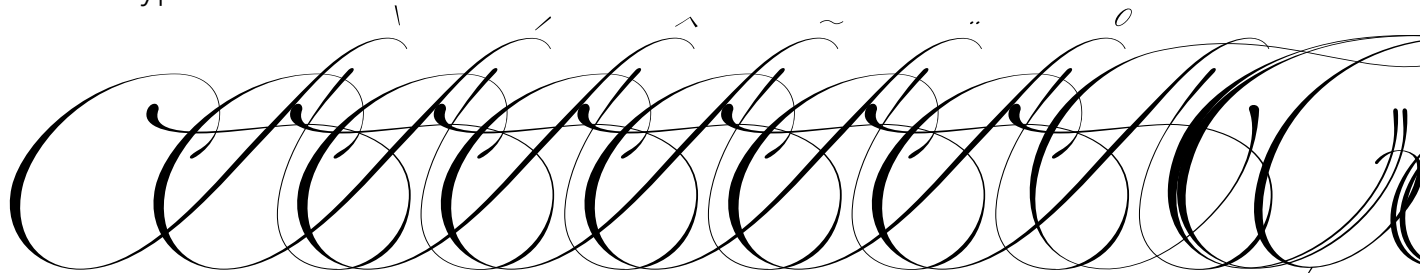
0 1 2 3 4 5 6 7 8 9

Punctuation and Symbols

! " # \$ % & ' ()
* + , - . : ; < =
> ? [\] ^ _ { |
} ¡ ¢ £ ¤ ¥ ¦ § ¨



All Other Glyphs



ä å æ ç è é ê ë ì

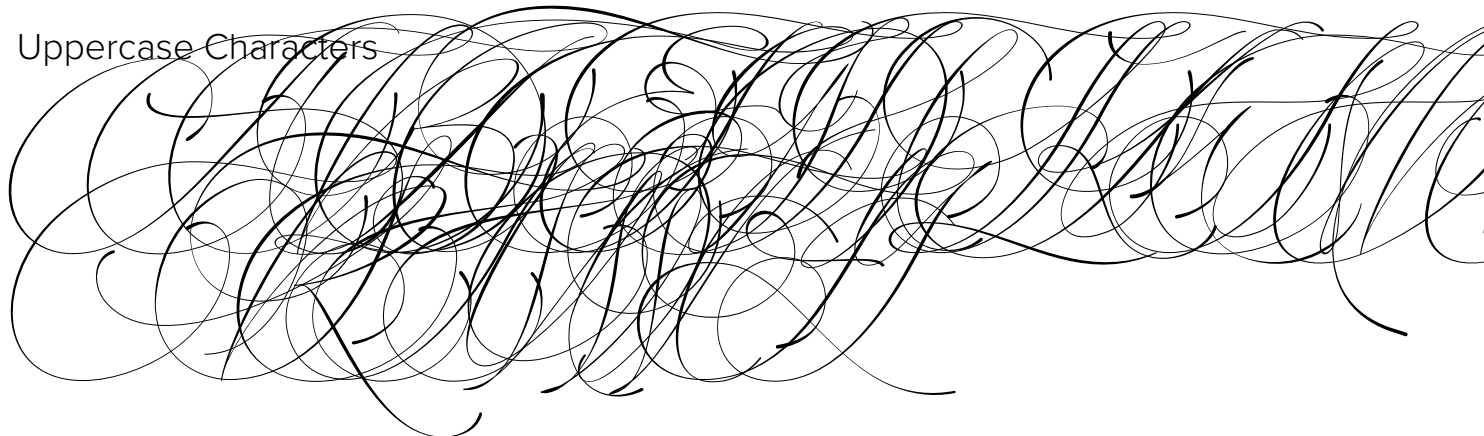
é ê ë ð ñ ò ó ô õ

ö ÷ ø ù ú û ü ý ß

ÿ

Sophia Script SV - Regular

Uppercase Characters



Lowercase Characters

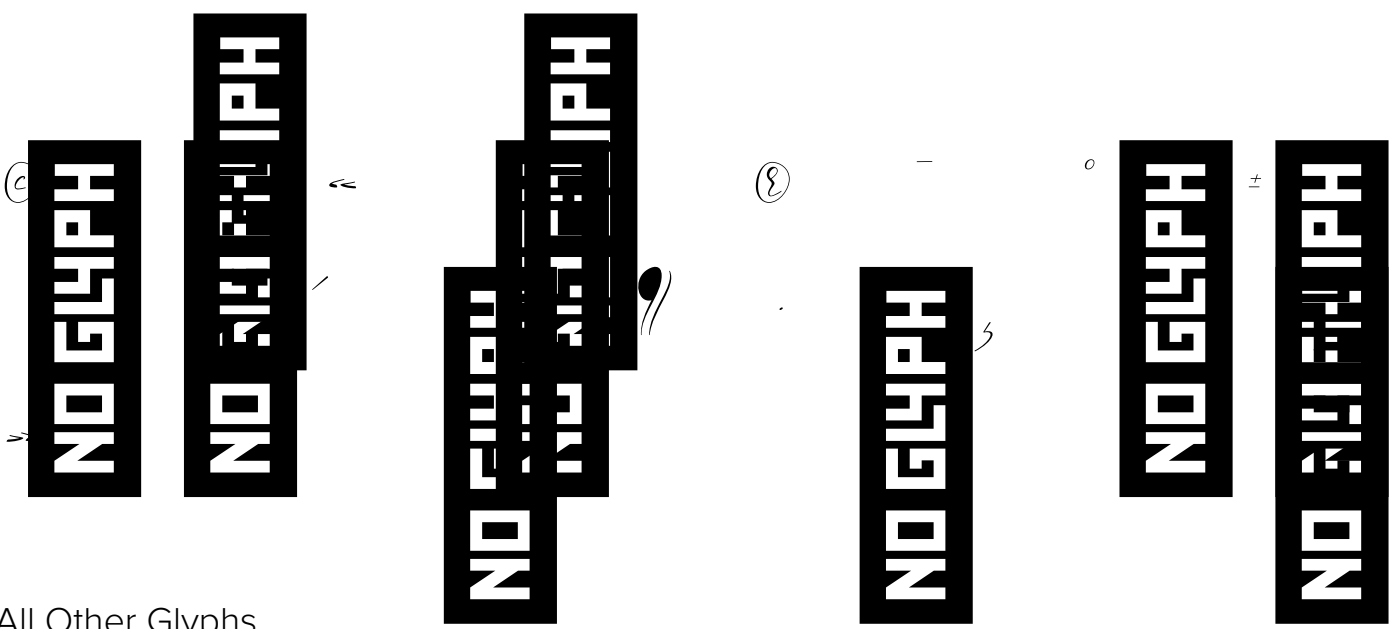
a b c d e f g h i j k l m n o p q
r s t u v w x y z

Numbers

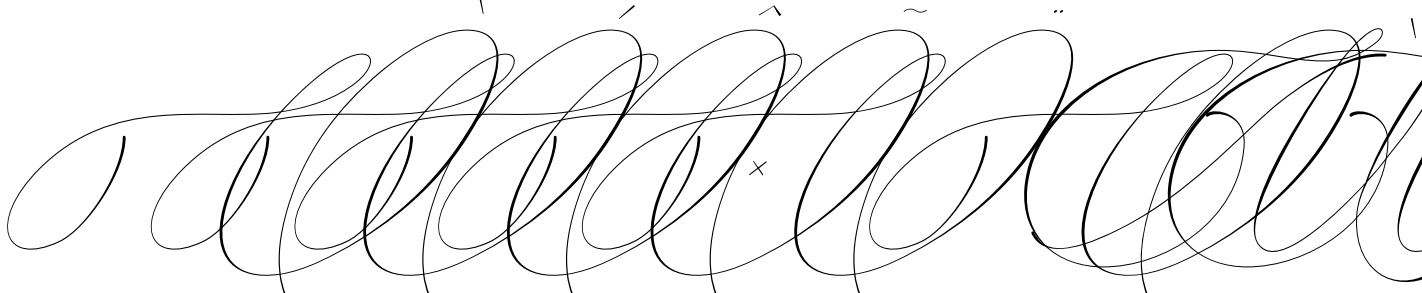
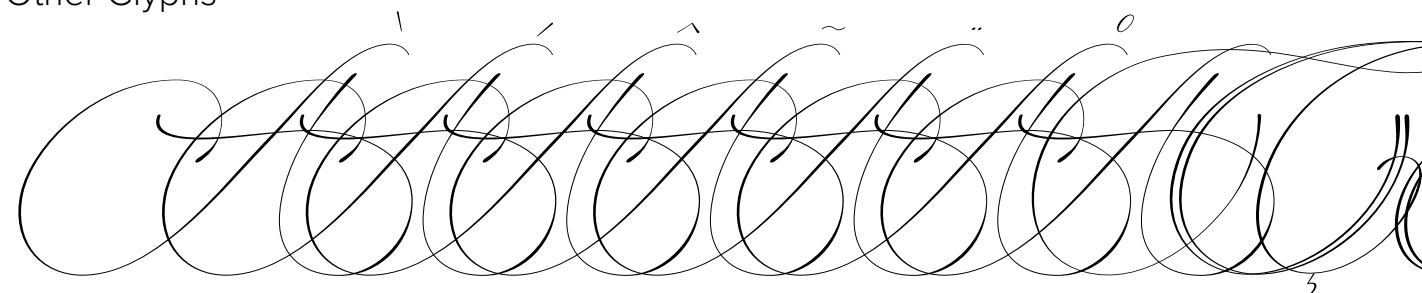
0 1 2 3 4 5 6 7 8 9

Punctuation and Symbols

! " # \$ % & ' ()
* + , - . : ; < =
> ? [\] ^ _ { |
} ¡ ¢ £ ¤ ¥ ¦ § ¨



All Other Glyphs



ä á â ã ä å æ ç è é ê ë ì

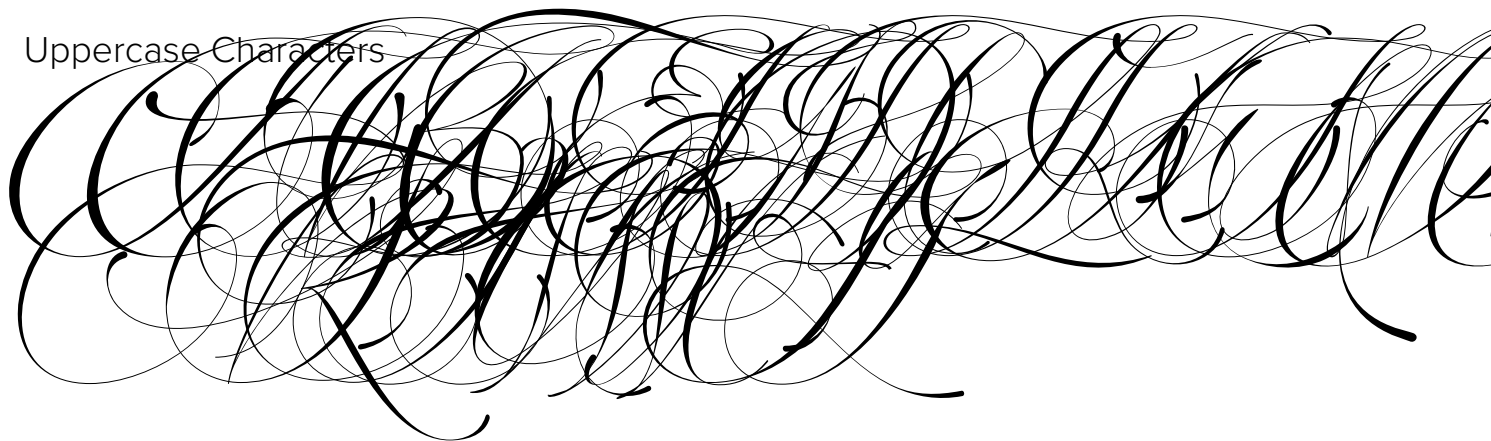
í î ï ð ñ ò ó ô õ

ö ÷ ø ù ú û ü ý ß

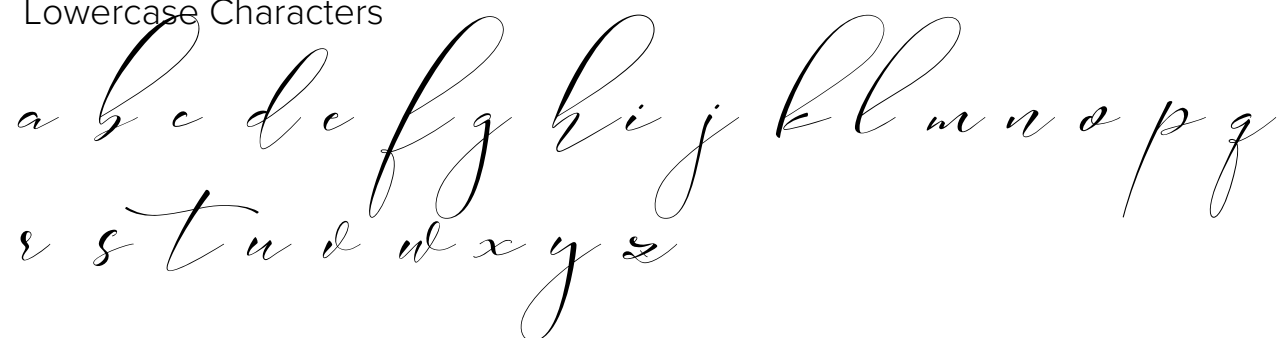
ÿ

Sophia Script SV Bold - Regular

Uppercase Characters



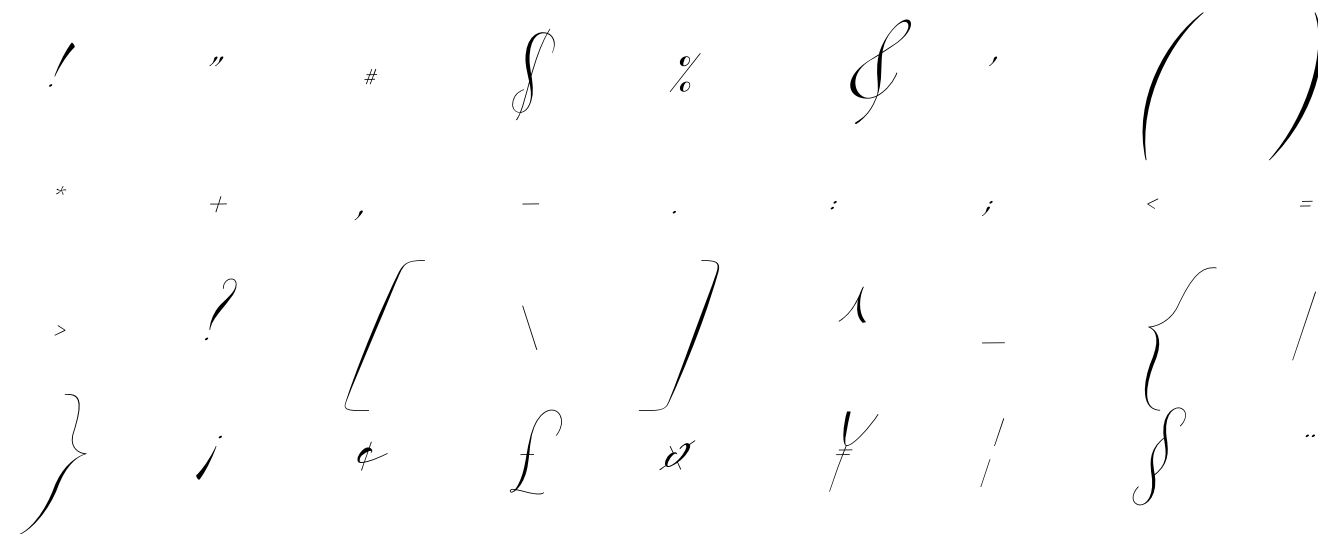
Lowercase Characters

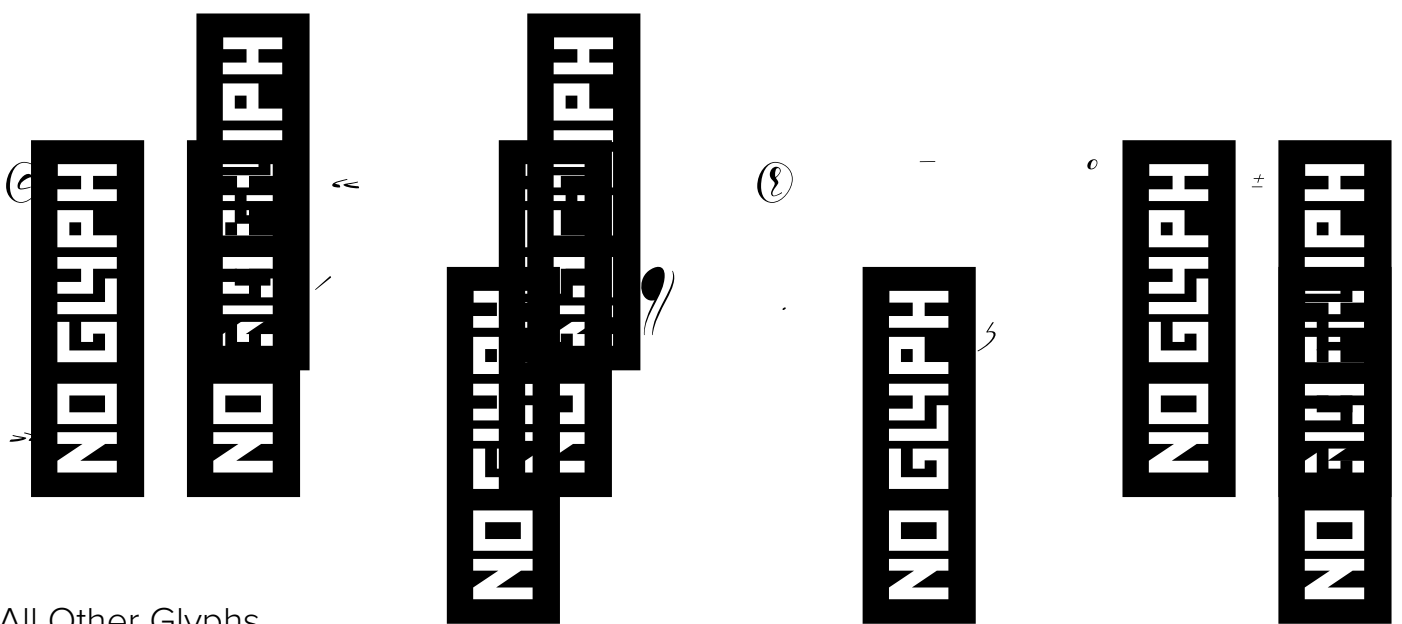


Numbers



Punctuation and Symbols





All Other Glyphs



ä å æ ç è é ê ë ì

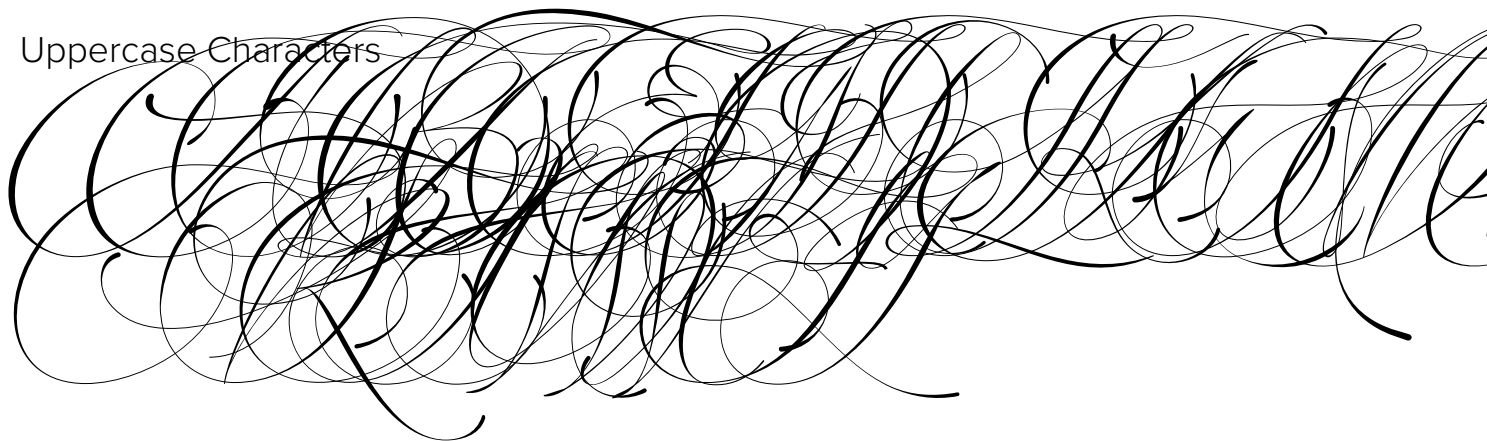
é ê ë ð ñ ò ó ô õ

ö ÷ ø ù ú û ü ý ß

ÿ

Sophia Script SV Medium - Regular

Uppercase Characters



Lowercase Characters

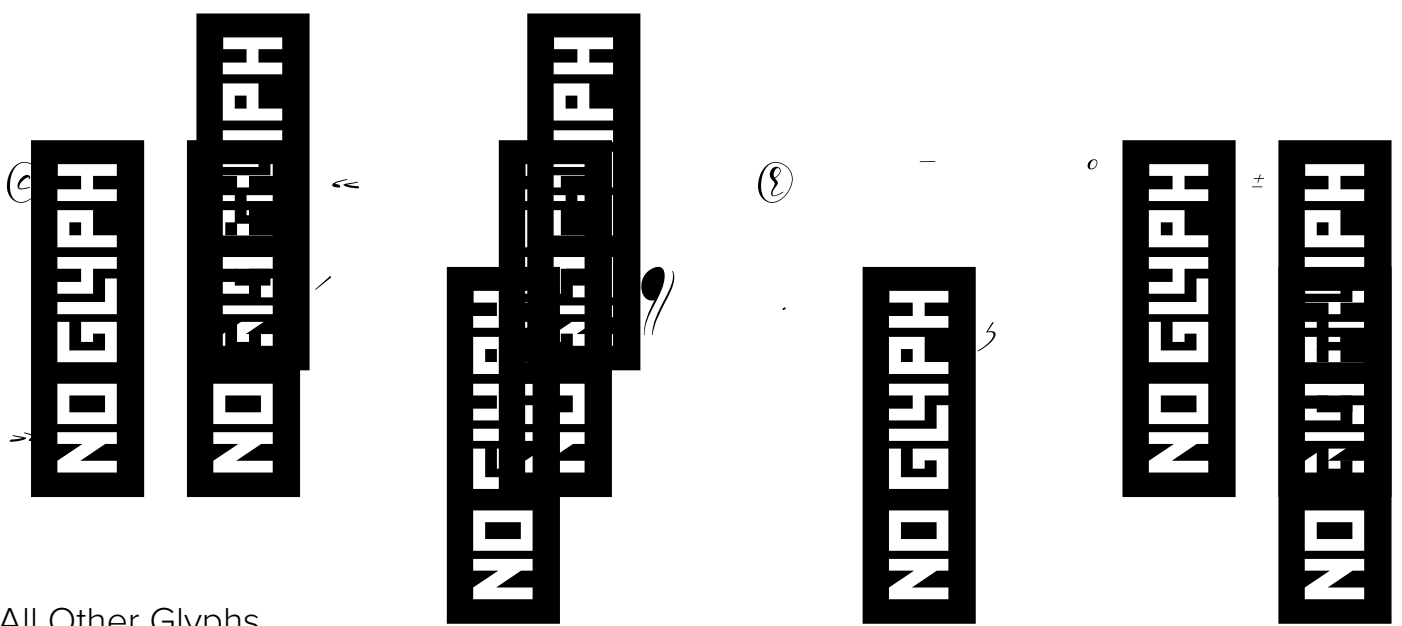
a b c d e f g h i j k l m n o p q
r s t u v w x y z

Numbers

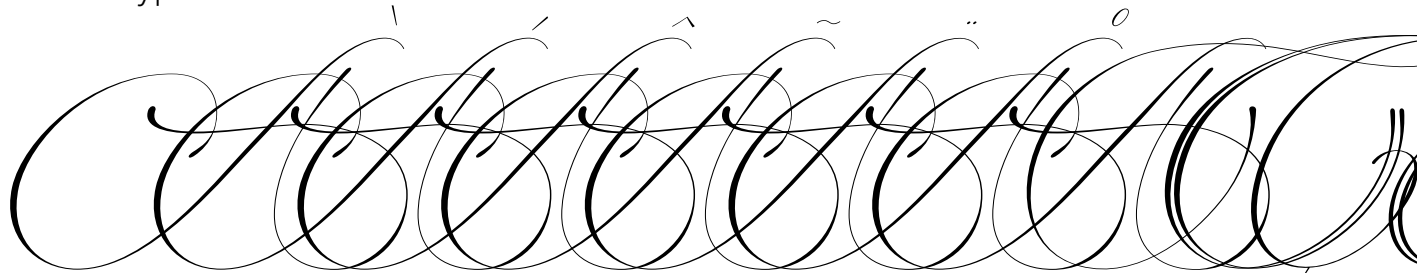
0 1 2 3 4 5 6 7 8 9

Punctuation and Symbols

! " # \$ % & ' ()
* + , - . : ; < =
> ? [\] ^ _ { |
} ¡ ¢ £ ¤ ¥ ¦ § ¨



All Other Glyphs



ä á â ã ä å æ ç è é ê ë ì

í î ï ð ñ ò ó ô õ

ö ÷ ø ù ú û ü ý ß

ÿ

Sophia Script SV ExtraBold - Regular

Uppercase Characters



Lowercase Characters

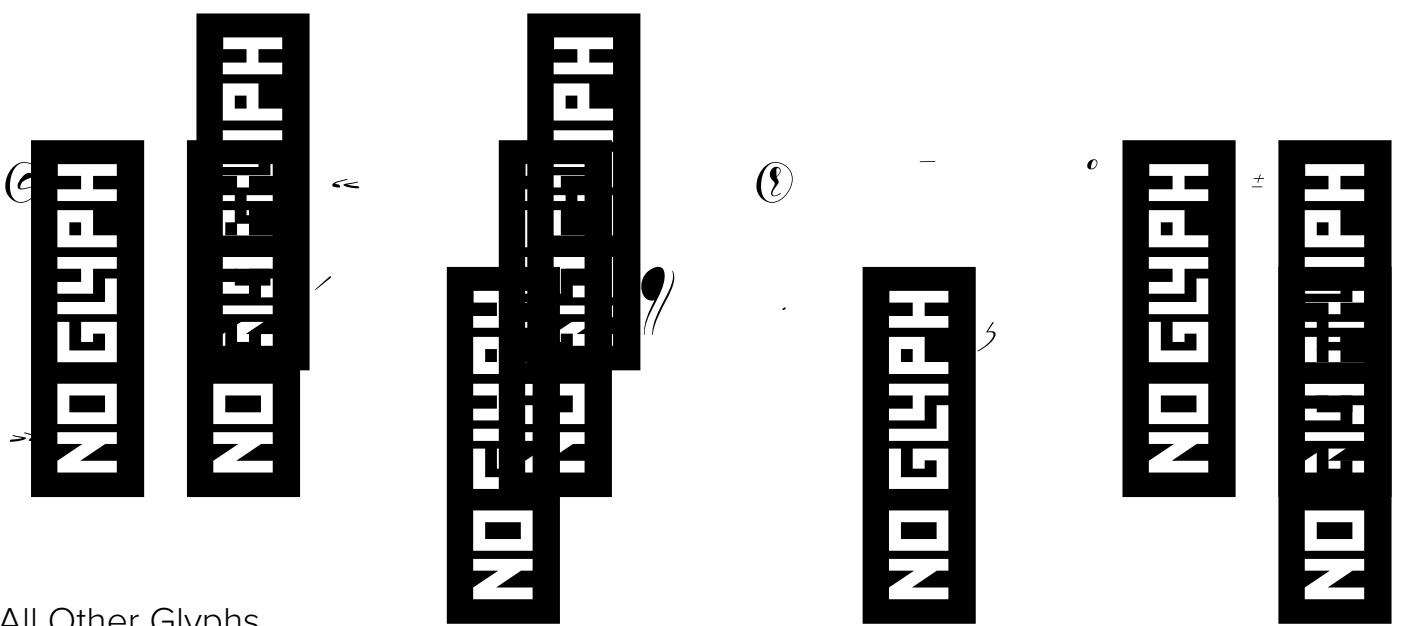
a b c d e f g h i j k l m n o p q
r s t u v w x y z

Numbers

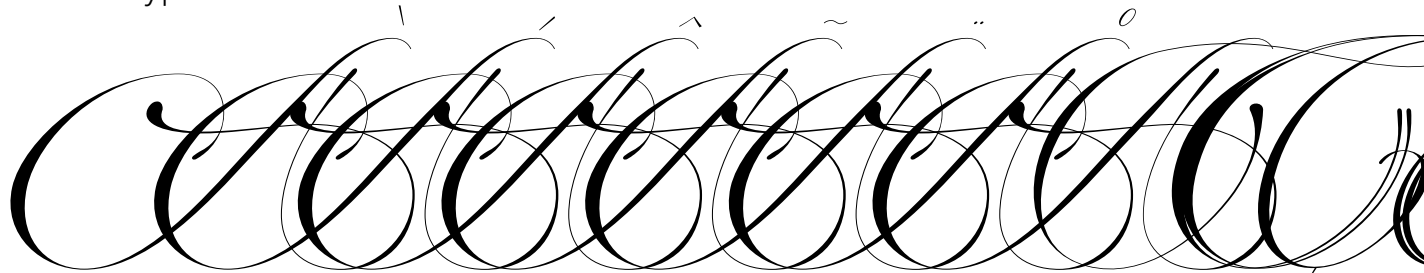
0 1 2 3 4 5 6 7 8 9

Punctuation and Symbols

! " # \$ % & ' ()
* + , - . : ; < =
> ? [\] ^ _ { |
} ¡ ¢ £ ¤ ¥ ¦ § ¨



All Other Glyphs



ä å æ ç è é ê ë ì

é ê ë ð ñ ò ó ô õ

ö ÷ ø ù ú û ü ý ß

ÿ