



FONT SPECIFICATION

# Chandiluna

# Chandiluna - Regular

## Uppercase Characters

A B C D E F  
G H I J K L  
M N O P Q R  
S T U V W X Y  
Z

## Lowercase Characters

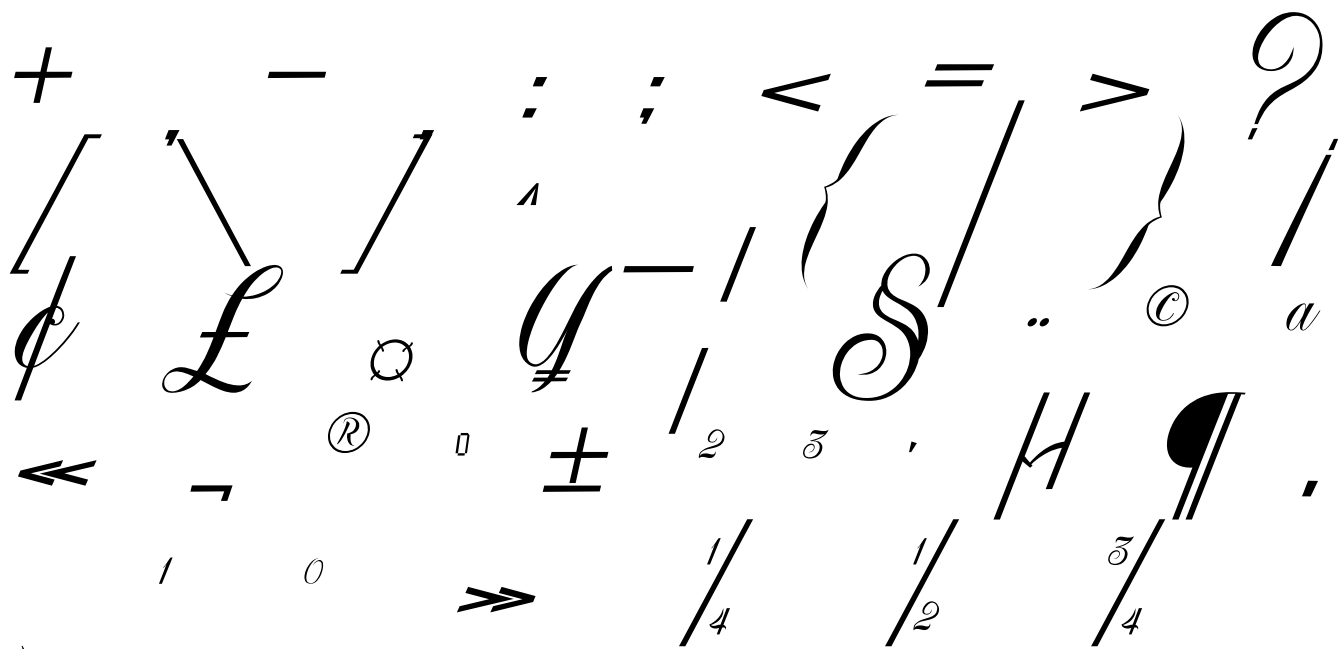
a b c d e f g h i j k l m n o p q r s  
t u v w x y z

## Numbers

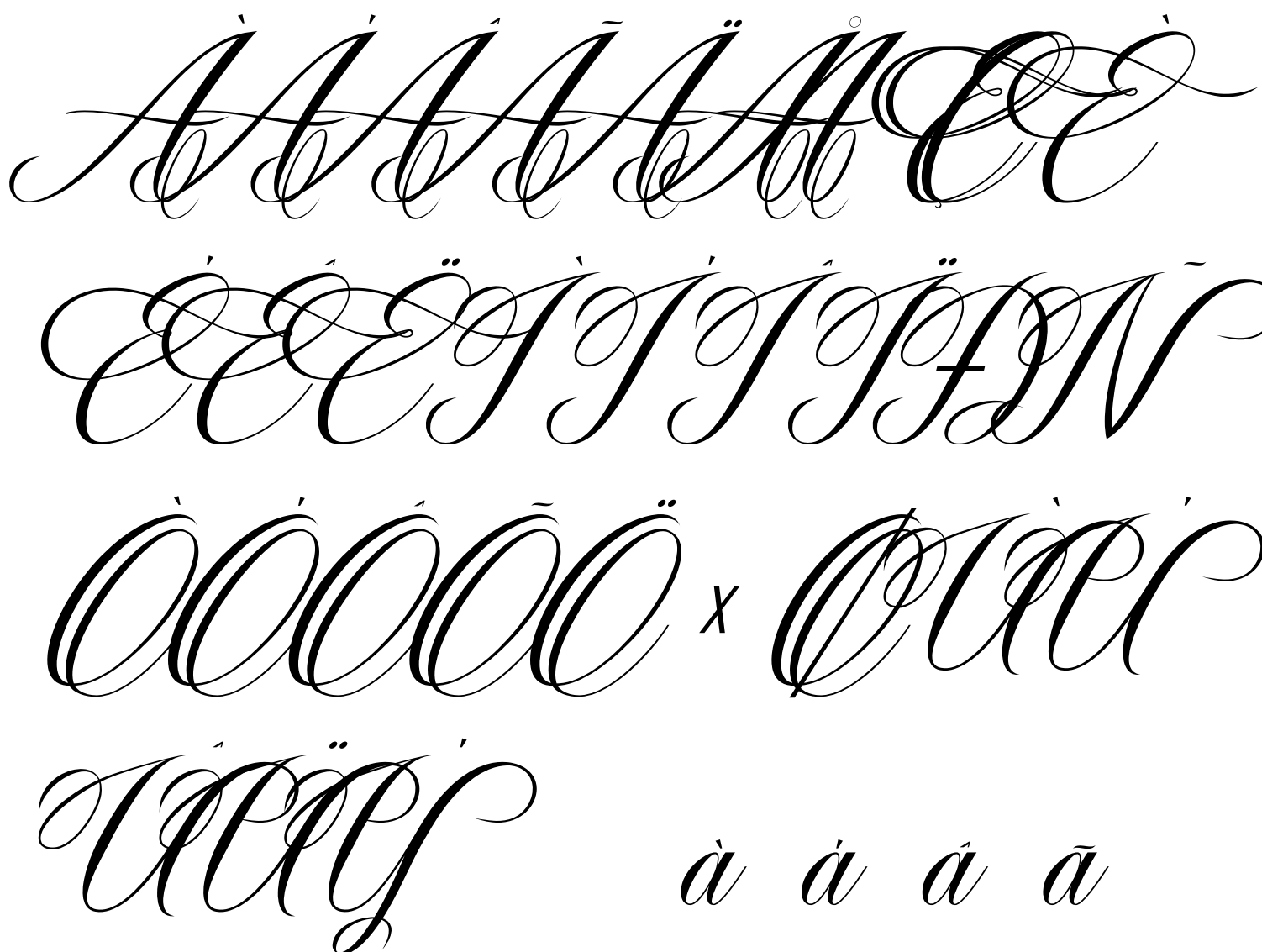
0 1 2 3 4 5 6 7 8 9

## Punctuation and Symbols

! " # \$ % & ' ( ) \*



All Other Glyphs



ä å æ ç è é ê ë ì

í î ï ð ñ ò ó ô õ

ö ÷ ø ù ú û ü ý ÿ

ı Ł Œ œ Š š Ÿ Ž

ž ƒ ‘ ’ ˇ ˙ ˚ ˛

” — — ‘ ’ “ ” ‘ ”

† ≠ • … ‰ ‹ › ⁄ €

™

—

A B C D E F G

H I J K L M N O

P Q R S T U V W X Y

Z a b c d e f g h

i j k l m n o p q

r s t u v w x y z

ao bo co do eo fo go ho io

j o k o l m o n o o o p o q o r o

s o t o u o u o u o x o y o z o a

b c d e f g h i j

k l m n o p q r s

t u v w x y z a b

c d e f g h i j k

l m n o p q r s t

u v w x y z o a b c

d e f g h i j k l

m n o p q r s t u

v w x y z b d f h

k l b d f h k l b

d f h k l b d f h

k l g p j l a y z





Su Clp yr ti t S

fi fl