



FONT SPECIFICATION

# Hiladous - Bold and Retro Font

# Hiladous Extrude - Regular

## Uppercase Characters

A row of 26 highly stylized, bubbly, and rounded uppercase letters in a black, extruded font style.

## Lowercase Characters

A row of 26 highly stylized, bubbly, and rounded lowercase letters in a black, extruded font style.

## Numbers

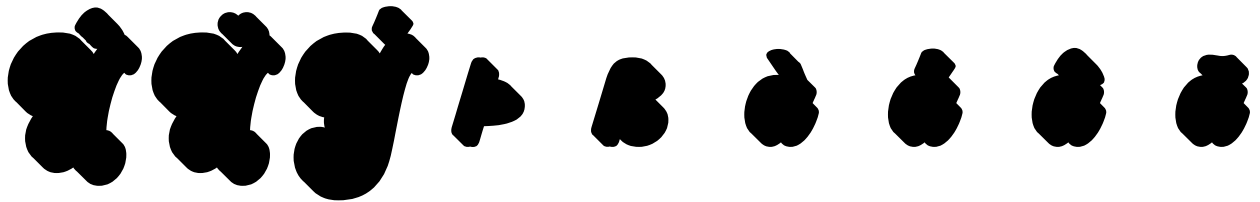
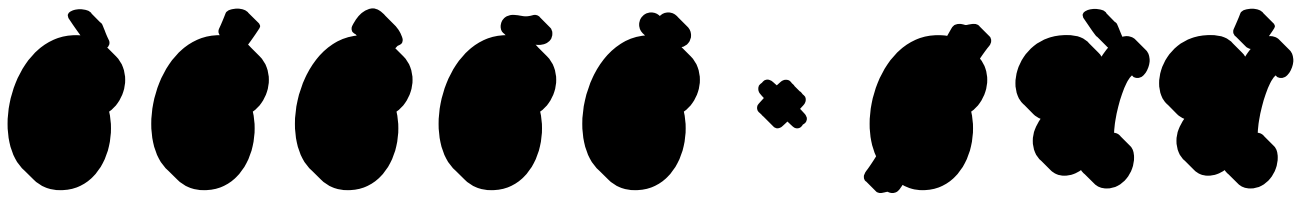
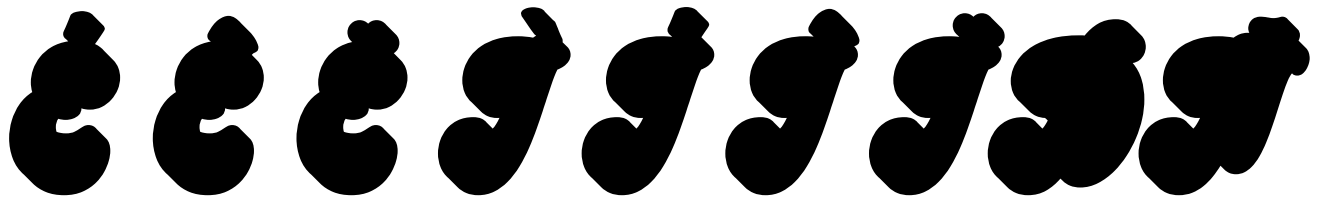
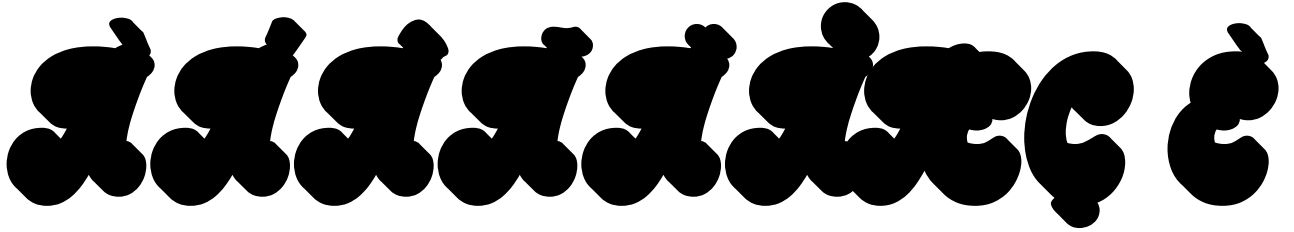
A row of 10 highly stylized, bubbly, and rounded numbers in a black, extruded font style.

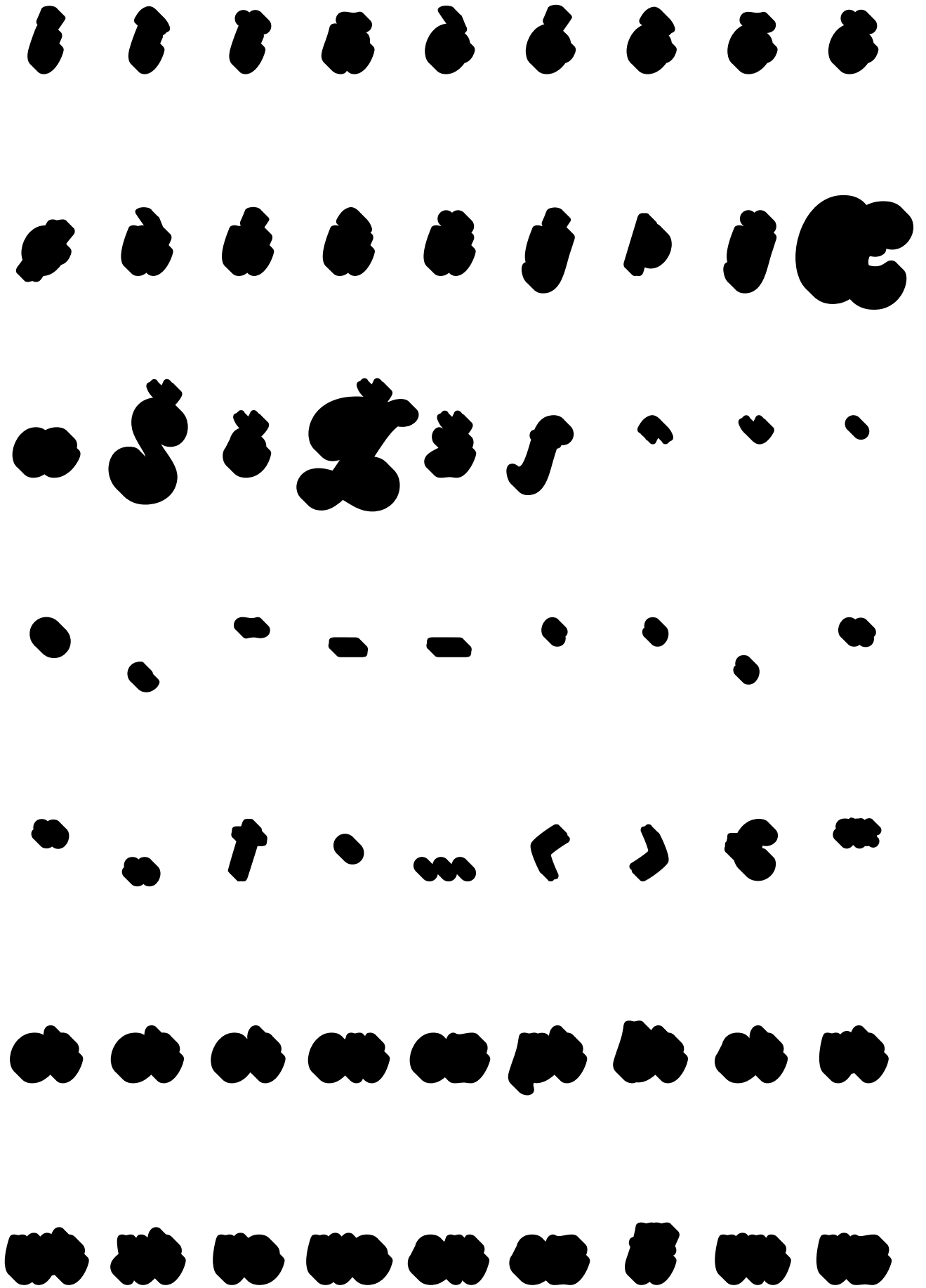
## Punctuation and Symbols

A collection of various punctuation marks and symbols, including exclamation points, question marks, brackets, and other decorative characters, all rendered in the same bubbly, extruded font style.



All Other Glyphs





W W W W W W W W W W W W W W W W W W W W

W W W W W W W W W W W W W W W W W W W W

W W W W W W W W W W W W W W W W W W W W

W W W W W W W W W W W W W W W W W W W W

W W W W W W W W W W W W W W W W W W W W

W W W W W W W W W W W W W W W W W W W W

W W W W W W W W W W W W W W W W W W W W

Handwritten cursive letters 'a' through 'z' in a bold, black, extruded style.

Handwritten cursive letters 'A' through 'Z' in a bold, black, extruded style.

Handwritten cursive numbers '0' through '9' in a bold, black, extruded style.

Handwritten cursive punctuation marks including comma, period, colon, semicolon, apostrophe, and hyphen in a bold, black, extruded style.

Handwritten cursive punctuation marks including exclamation point, question mark, at sign, hash, dollar sign, percent sign, ampersand, asterisk, and plus sign in a bold, black, extruded style.

Handwritten cursive symbols including copyright, registered trademark, and trademark symbols in a bold, black, extruded style.

Handwritten cursive symbols including registered trademark, copyright, and trademark symbols in a bold, black, extruded style.

l l l l l l l l

l l l l l l l l l l l l l l l l l l

l l l l l l l l l l l l l l l l l l

l l l l l l l l l l l l l l l l l l

# Hiladous - Regular

## Uppercase Characters

A B C D E F G H I J  
K L M N O P Q R S T  
U V W X Y Z

## Lowercase Characters

a b c d e f g h i j k l m n o p q r s t u v w  
x y z

## Numbers

0 1 2 3 4 5 6 7 8 9

## Punctuation and Symbols

! " # \$ % & ' ( ) \* + , -  
. : ; < = > ? [ \ ] ^ \_ {  
/ } ¡ ¢ £ ¤ ¥ § ¨ © ª «



® º ² ³ ´ ˙ ˘ ˚ »

All Other Glyphs

À Á Â Ã Ä Å Æ Ç È

É Ê Ë Ì Í Î Ï Ð Ñ

Ò Ó Ô Õ Ö × Ø Ù Ú

Û Ü Ý Þ ß à á â ã

ä å æ ç è é ê ë ì

í î ï ñ ò ó ô õ ö

ø ù ú û ü ý þ ÿ Œ

æ Š š Ź ź ſ ˆ ˇ ˙

◊ ˘ ˘ ˘ ˘ ˘ ˘ ˘ ˘

” „ † • … ‹ › € ™

er er or ox oz pr br sr vr

wr xr us us ex sz tt vx vz

ux wz a b c d e f g

h i j k l m n o p

r s t u v w x y z

a g d e h g h i j

k l m n o r s t u

y w x y z a c d e

g h i j k l m n p

r t u x y a d g h

i j k l m n p r t

y x y a g d e h g

h i j k l m n o p

r s t u v w x y z

a c d e g h i j k

l m n p r t u x y

b d f h k l r b d

f h k l r A C E H

K M P Q U W X A

H K M P U Hiladous