



FONT SPECIFICATION

# Honey Taste Font

# Honey Taste - Regular

## Uppercase Characters

A B C D E F G H I J K L M N O P  
Q R S T U V W X Y Z

## Lowercase Characters

A B C D E F G H I J K L M N O P  
Q R S T U V W X Y Z

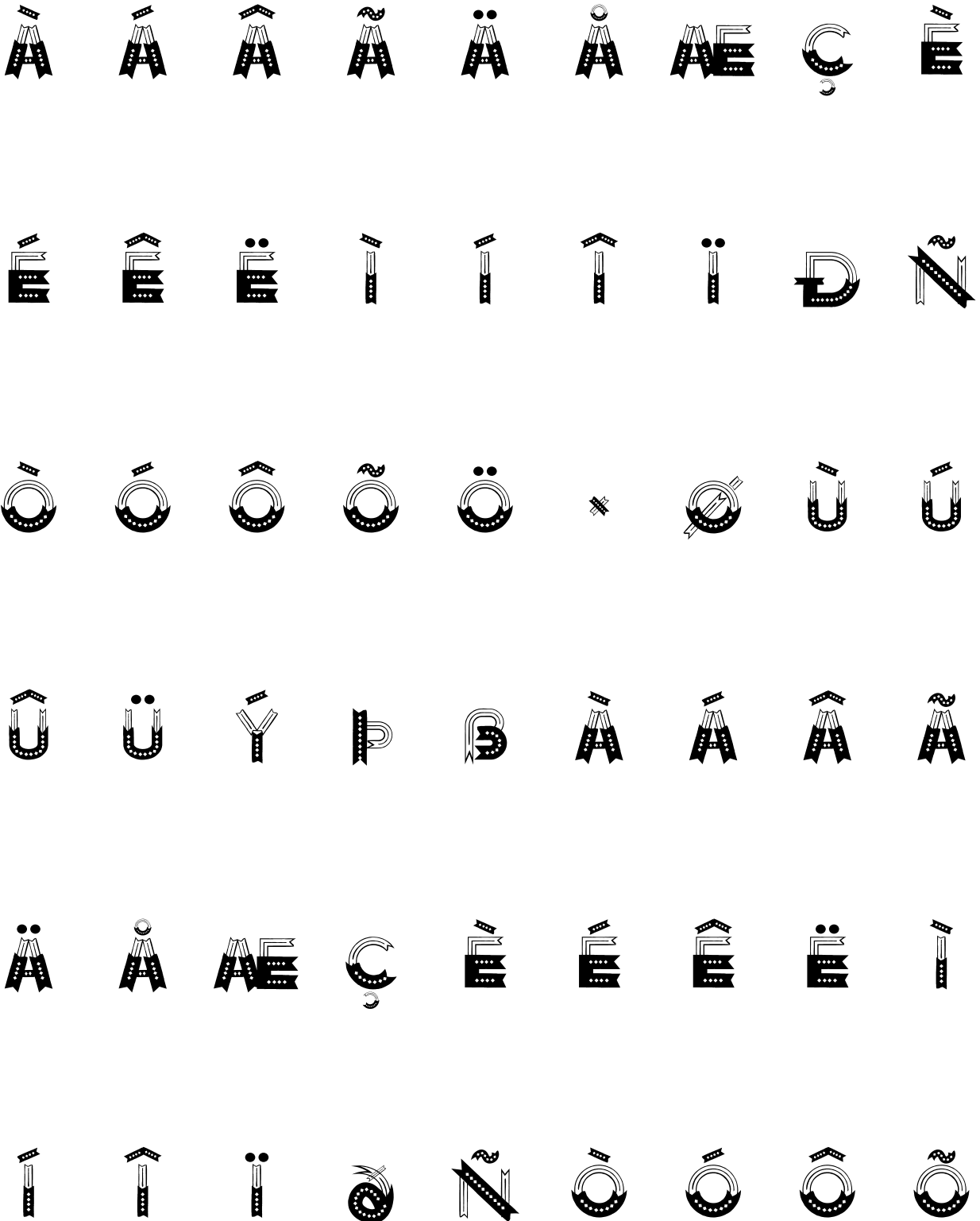
## Numbers

0 1 2 3 4 5 6 7 8 9

## Punctuation and Symbols

! " # \$ % & ' ( ) \* + , - . : ; < = > ? @ [ \ ] ^ \_ ` { | } ~  
! " # \$ % & ' ( ) \* + , - . : ; < = > ? @ [ \ ] ^ \_ ` { | } ~  
! " # \$ % & ' ( ) \* + , - . : ; < = > ? @ [ \ ] ^ \_ ` { | } ~  
! " # \$ % & ' ( ) \* + , - . : ; < = > ? @ [ \ ] ^ \_ ` { | } ~

All Other Glyphs



ö ÷ ø ù ú û ü ý þ

ÿ Đ Ĩ Ł ł Œ œ Š š

Ÿ Ž ž ˆ ˇ ˘ ˙ ˚ ˛

ƒ ƒ — — ˆ ˆ ˆ ˆ ˆ

Œ œ † ‡ • … œ œ † ‡

⁄ € ™ — ☒