

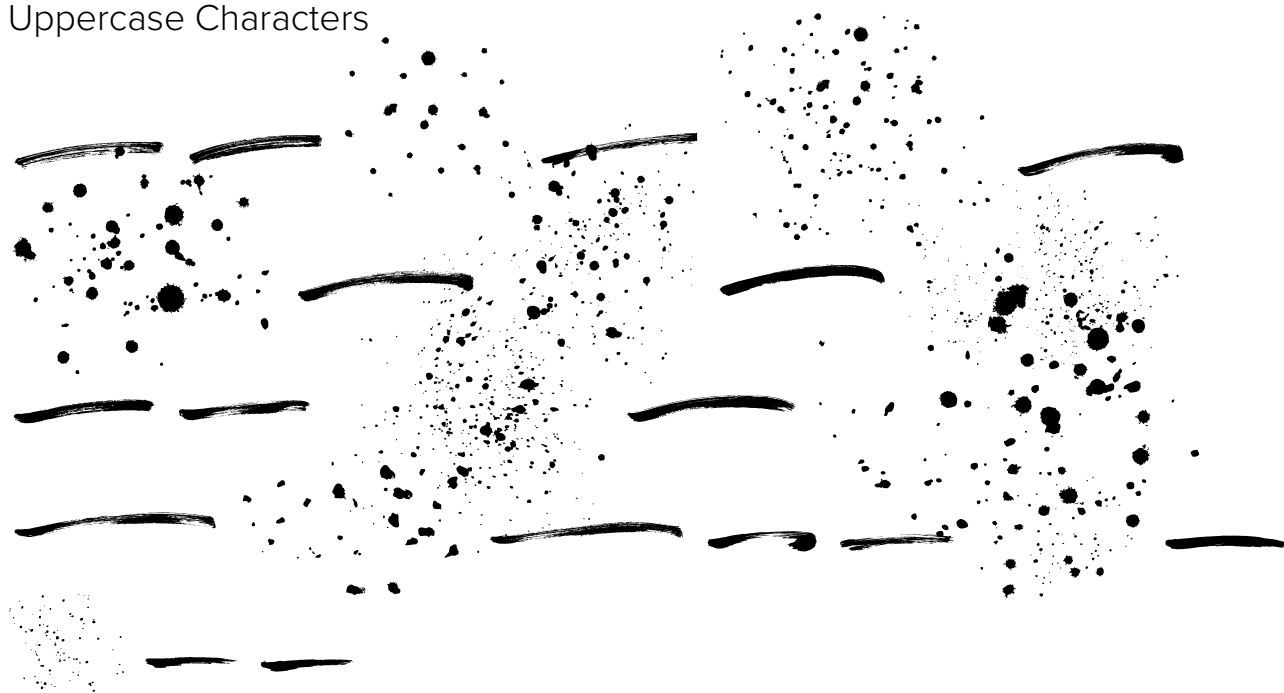


FONT SPECIFICATION

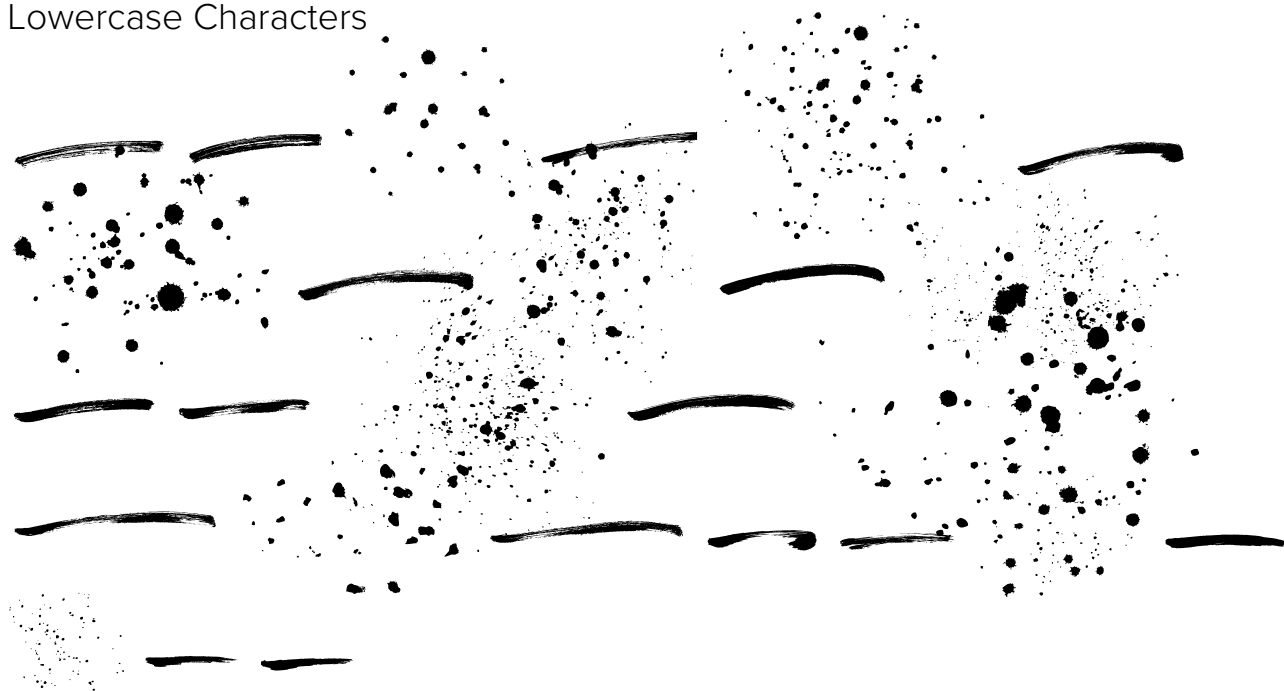
Bambe

# Bambe Swash - Regular

## Uppercase Characters



## Lowercase Characters



## Numbers

Punctuation and Symbols

All Other Glyphs

# Bambe - Regular

## Uppercase Characters

A B C D E F G H I J K L M N O P Q R S T  
U V W X Y Z

## Lowercase Characters

A B C D E F G H I J K L M N O P Q R S T  
U V W X Y Z

## Numbers

0 1 2 3 4 5 6 7 8 9

## Punctuation and Symbols

! " # \$ % & ' ( ) \* + , -  
. : ; < = > ? [ \ ] ^ \_ {  
| } ¡ ¢ £ ¥ " « ± ' , »

## All Other Glyphs

À Á Â Ã Ä Å Æ Ç È

É Ê Ë Ì Í Î Ï Ñ Ò

Ó Ô Õ Ö × Ø Ù Ú Û

Ü Ý Þ À Á Â Ã Ä Å

Æ Ç È É Ê Ë Ì Í Î

Ï Ñ Ò Ó Ô Õ Ö ÷ ø

ù ú û ü ý ÿ I t t

Œ œ Š š Ÿ Ž ž ˆ ˇ

° ~ " - - ‘ ’ , “

” „ … < > / € - A

A B C E H K L R U

Z