



FONT SPECIFICATION

FIVE MONOGRAM - BUNDLE

MONOGRAM LOVED - Regular

Uppercase Characters

A B C D E F G H I J K
L M N O P Q R S T U V
W X Y Z

Lowercase Characters

A B C D E F G H I J K
L M N O P Q R S T U V
W X Y Z

Numbers

☒ ☒ ☒ ☒ ☒ ☒ ☒ ☒ ☒ ☒

Punctuation and Symbols

All Other Glyphs

A A A A A A C E E

E E J J J J N O O

O O O O U U U U Y

A A A A A A C E E

E E J J J J N O O

O O O O U U U U Y

Y Y ☒

MONOGRAM LOVED - Regular

Uppercase Characters

A B C D E F G H I J K
L M N O P Q R S T U V
W X Y Z

Lowercase Characters

A B C D E F G H I J K
L M N O P Q R S T U V
W X Y Z

Numbers

☒ ☒ ☒ ☒ ☒ ☒ ☒ ☒ ☒ ☒

Punctuation and Symbols

All Other Glyphs

A A A A A A C E E

E E J J J J N O O

O O O O U U U U Y

A A A A A A C E E

E E J J J J N O O

O O O O U U U U Y

Y Y ☒

Broolia - Regular

Uppercase Characters

A B C D E F G H I J K L M N O P Q R S T
U V W X Y Z

Lowercase Characters

a b c d e f g h i j k l m n o p q r s t u
v w x y z

Numbers

0 1 2 3 4 5 6 7 8 9

Punctuation and Symbols

! # \$ % & () * + , - .
: ; < = > ? [\] _ { | }
¡ ¢ £ ¥ § © « ® º · »

All Other Glyphs

À Á Â Ã Ä Å Æ Ç È

É Ê Ë Ì Í Î Ï Ñ Ò

Ó Ô Õ Ö × Ø Ù Ú Û

Ü Ý ß à á â ã ä å

æ ç è é ê ë ì í î

ï ñ ò ó ô õ ö ø ù

ú û ü ý ÿ ı š š Ÿ

ž — — ‘ ’ ‚ “ ” „

• … < > £ œ ſſ ſm ſb

sh ll tt on st ☒

Broolia Monogram - Regular

Uppercase Characters

A B C D E F G H I J
K L M N O P Q R S
T U V W X Y Z

Lowercase Characters

A B C D E F G H I J
K L M N O P Q R S
T U V W X Y Z

Numbers

☒ ☒ ☒ ☒ ☒ ☒ ☒ ☒ ☒ ☒

Punctuation and Symbols

All Other Glyphs

À Á Â Ã Ä Å Æ Ç È

É Ê Ë Ì Í Î Ï Ñ Ò Ó

Ô Õ Ö Ø Ù Ú Û Ü Ý

À Á Â Ã Ä Å Æ Ç È

É Ê Ë Ì Í Î Ï Ñ Ò Ó

Ô Õ Ö Ø Ù Ú Û Ü Ý

ŷ ŷ ☒

MONOGRAMUS NOS - Regular

Uppercase Characters

A B C D E F G H I
J K L M N O P Q R
S T U V W X Y Z

Lowercase Characters

A B C D E F G H I
J K L M N O P Q R
S T U V W X Y Z

Numbers

☒ ☒ ☒ ☒ ☒ ☒ ☒ ☒ ☒ ☒

Punctuation and Symbols

&

All Other Glyphs

ſ ſ ſ ſ ſ ſ ſ ſ ſ

ſ ſ ʃ ʃ ʃ ʃ ʒ ʒ ʒ

ʒ ʒ ʒ ʒ ʒ ʒ ʒ ʒ ʒ

ſ ſ ſ ſ ſ ſ ſ ſ ſ

ſ ſ ʃ ʃ ʃ ʃ ʒ ʒ ʒ

ʒ ʒ ʒ ʒ ʒ ʒ ʒ ʒ ʒ

ʒ ʒ ☒

MONOGRAMUS - Regular

Uppercase Characters

A B C D E F G H I J K L
M N O P Q R S T U V W
X Y Z

Lowercase Characters

A B C D E F G H I J K L
M N O P Q R S T U V W
X Y Z

Numbers

☒ ☒ ☒ ☒ ☒ ☒ ☒ ☒ ☒ ☒

Punctuation and Symbols

&

All Other Glyphs

À Á Â Ã Ä Å Ç È É

Ê Ë Ì Í Î Ï Ñ Ò Ó

Ô Õ Ö Ø Ù Ú Û Ü Ý

À Á Â Ã Ä Å Ç È É

Ê Ë Ì Í Î Ï Ñ Ò Ó

Ô Õ Ö Ø Ù Ú Û Ü Ý

ÿ ŷ ☒

Broolia Monograms - Regular

Uppercase Characters

A B C D E F G H I
J K L M N O P Q R
S T U V W X Y Z

Lowercase Characters

A B C D E F G H I
J K L M N O P Q R
S T U V W X Y Z

Numbers

☒ ☒ ☒ ☒ ☒ ☒ ☒ ☒ ☒ ☒

Punctuation and Symbols

All Other Glyphs

À Á Â Ã Ä Å Æ Ç È

É Ê Ë Ì Í Î Ï Ñ Ò Ó

Ô Õ Ö × Ø Ù Ú Û Ü Ý Þ

à á â ã ä å æ ç è

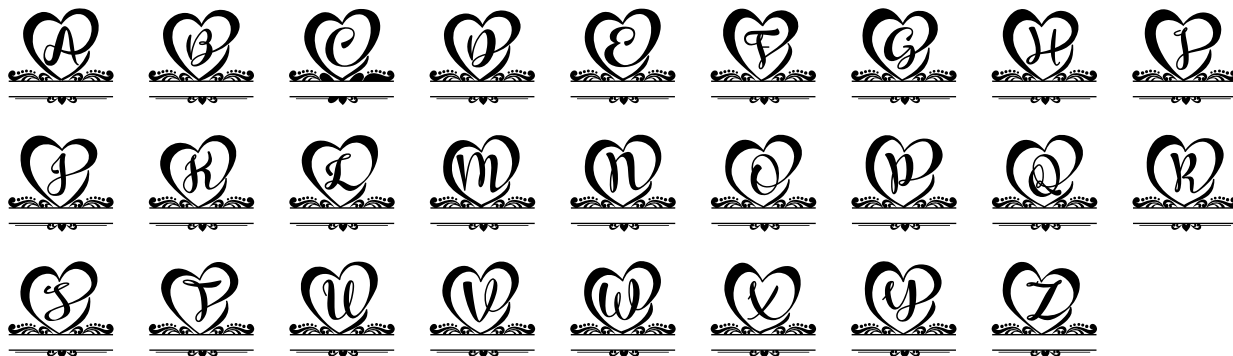
é ê ë ì í î ï ñ ò ó

ô õ ö × ø ù ú û ü ý þ

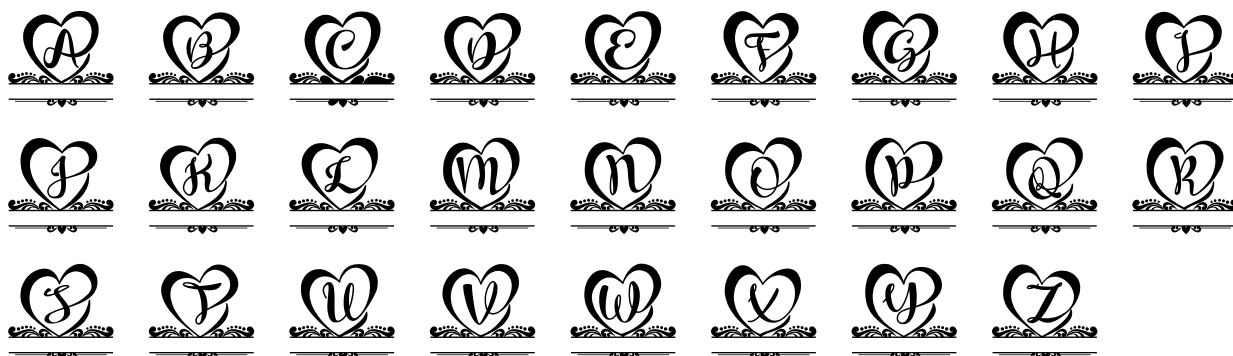
ÿ ŷ ☒

MONOGRAM LOVED - Regular

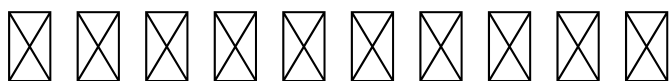
Uppercase Characters



Lowercase Characters



Numbers



Punctuation and Symbols

All Other Glyphs

A A A A A A C E E

E E F F F F N O O

O O O O U U U U Y

A A A A A A C E E

E E F F F F N O O

O O O O U U U U Y

Y Y ☒

Monogram And Rose - Regular

Uppercase Characters

A B C D E F G H I J K L M
N O P Q R S T U V W X Y Z

Lowercase Characters

A B C D E F G H I J K L M
N O P Q R S T U V W X Y Z

Numbers

☒ ☒ ☒ ☒ ☒ ☒ ☒ ☒ ☒ ☒

Punctuation and Symbols

All Other Glyphs

A A A A A A C E E

E E I I I I N O O

O O O O U U U U Y

A A A A A A C E E

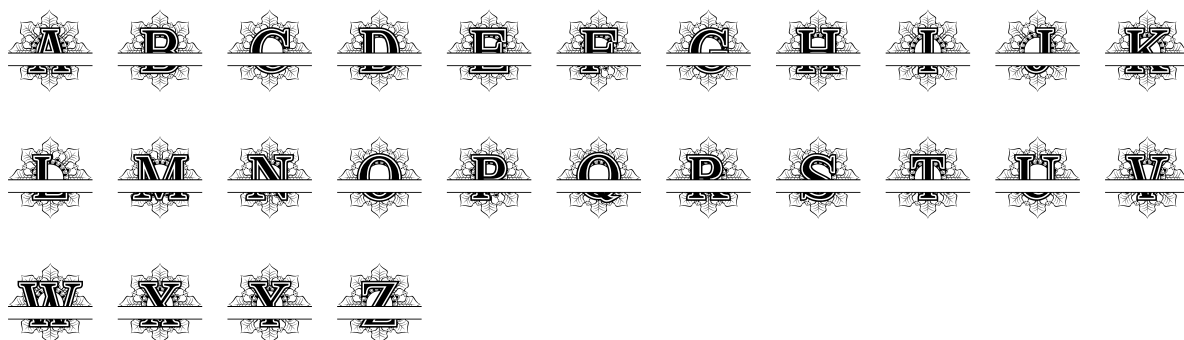
E E I I I I N O O

O O O O U U U U Y

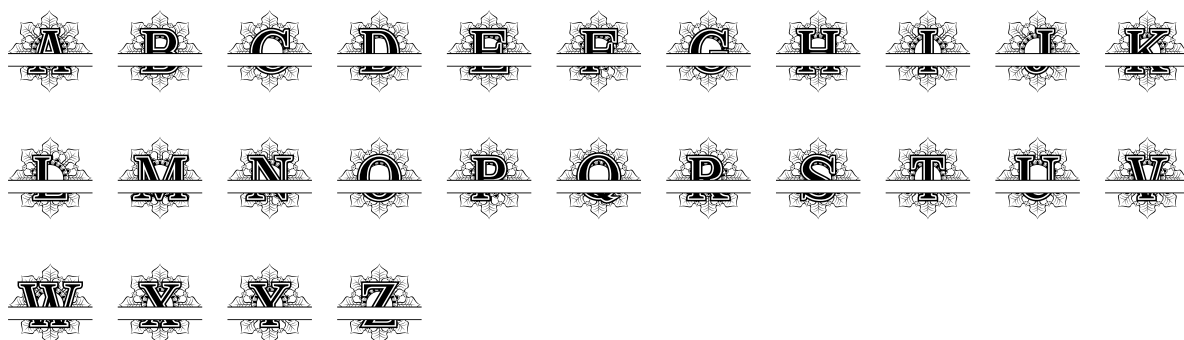
Y Y ☒

Mandalas Monogram - Regular

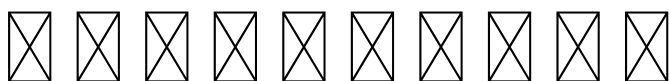
Uppercase Characters



Lowercase Characters



Numbers



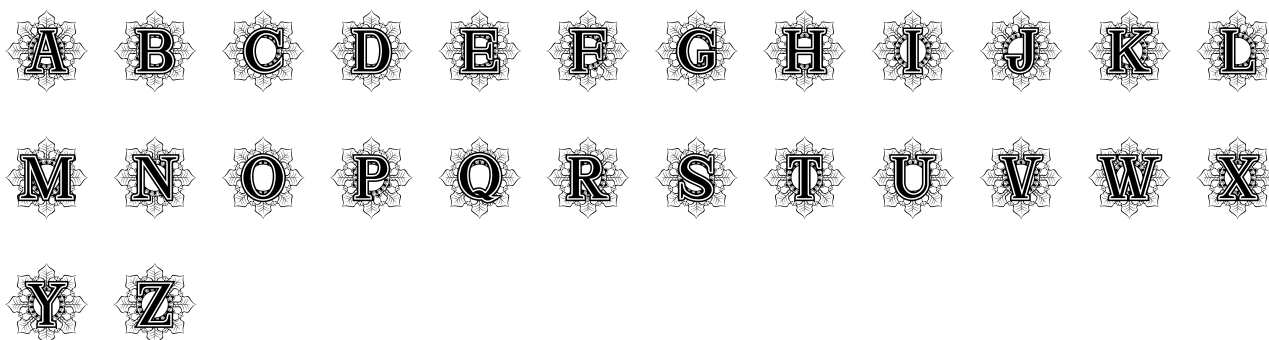
Punctuation and Symbols

All Other Glyphs

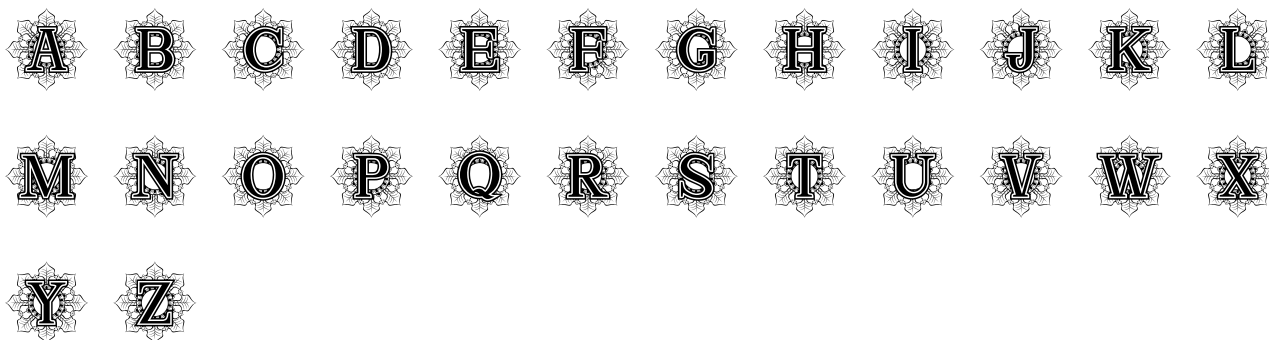


Mandalas Monogram Ori - Regular

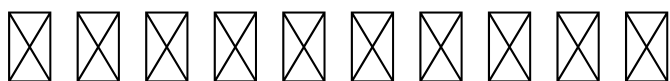
Uppercase Characters



Lowercase Characters



Numbers



Punctuation and Symbols

All Other Glyphs

À Á Â Ã Ä Å Ç È É

Ê Ë Ì Í Î Ï Ñ Ò Ó

Ô Õ Ö Ø Ù Ú Û Ü Ý

À Á Â Ã Ä Å Ç È É

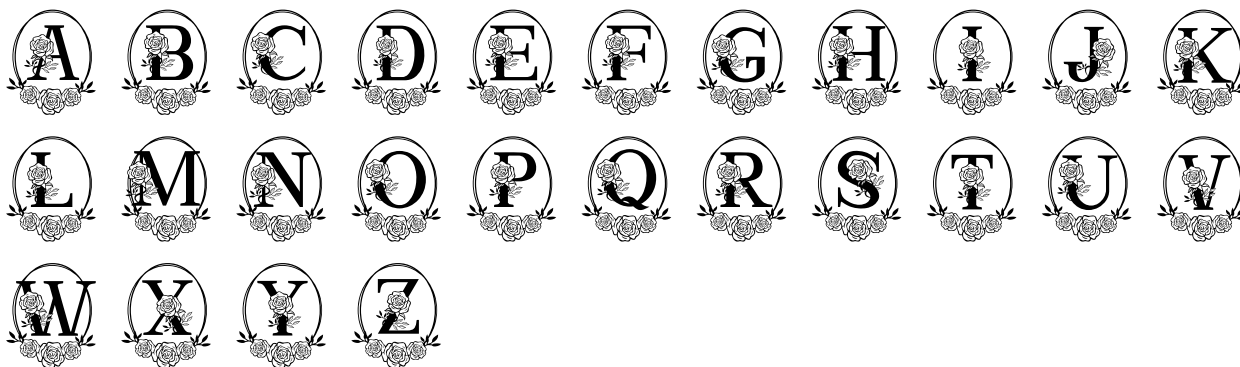
Ê Ë Ì Í Î Ï Ñ Ò Ó

Ô Õ Ö Ø Ù Ú Û Ü Ý

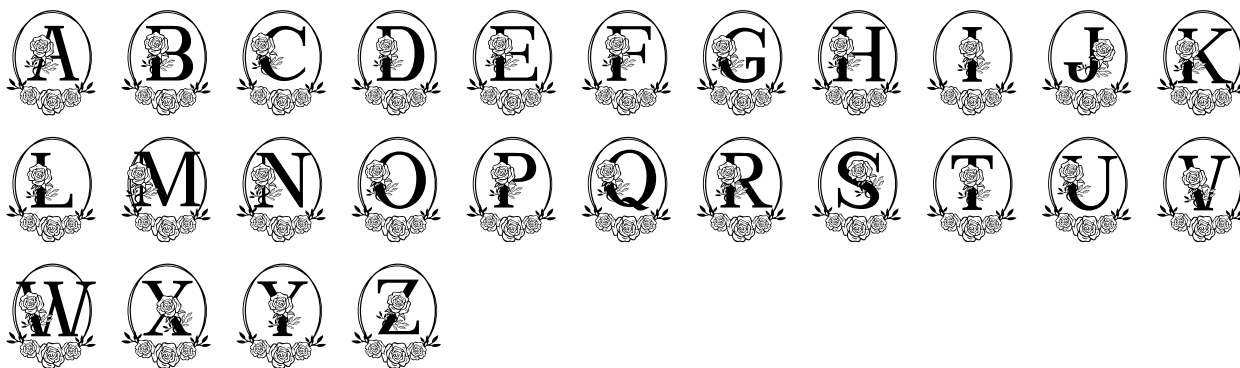
Ÿ Ź ☒

Monogram Art Rose - Regular

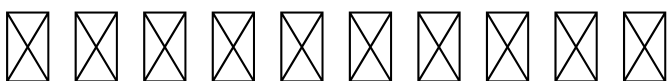
Uppercase Characters



Lowercase Characters



Numbers



Punctuation and Symbols

All Other Glyphs

