



FONT SPECIFICATION

# Trixie Layered Multiply Typeface

# Trixie Line - Light

## Uppercase Characters

A B C D E F G H I J K L  
M N O P Q R S T U V  
W X Y Z

## Lowercase Characters

A B C D E F G H I J K L  
M N O P Q R S T U V  
W X Y Z

## Numbers

0 1 2 3 4 5 6 7 8 9

## Punctuation and Symbols

! " # \$ % & ' ( ) \* + , - . : ;  
/ : { } ~

˙ ˘ ˉ ˘ ˘ ˘ ˘ ˘ ˘  
˘ ˘ ˘ ˘ ˘ ˘ ˘ ˘  
≠

All Other Glyphs

À Á Â Ã Ä Å Æ Ç È É

Ê Ë Ì Í Î Ï Ñ Ò Ó Ô Õ

Ö Ù Ú Û Ü Ý Æ Á Â

Ã Ä Å Æ Ç È É Ê Ë Ì

Í Î Ï Ñ Ò Ó Ô Õ Ö Ù Ú

Û Ü Ý Þ ÿ ƒ

# Trixie Regular - Regular

## Uppercase Characters

A B C D E F G H I J K L  
M N O P Q R S T U V  
W X Y Z

## Lowercase Characters

A B C D E F G H I J K L  
M N O P Q R S T U V  
W X Y Z

## Numbers

0 1 2 3 4 5 6 7 8 9

## Punctuation and Symbols

! " # \$ % & '   
( ) \* + , - . :



All Other Glyphs



Ů ů ŷ ŷ ŷ €

# Trixie Shadow - Regular

## Uppercase Characters

**A B C D E F G H I J K L  
M N O P Q R S T U V  
W X Y Z**

## Lowercase Characters

**A B C D E F G H I J K L  
M N O P Q R S T U V  
W X Y Z**

## Numbers

**0 1 2 3 4 5 6 7 8 9**

## Punctuation and Symbols

**! " # \$ % & '   
( ) \* + , - . :**



; ‹ = › ? ( \  
) ^ \_ ( | ) £  
¥

All Other Glyphs

À Á Â Ã Ä Ë Ì Í Î Ï

ì í î ï ñ ò ó ô õ

ö ù ú û ü ý À Á Â

Ã Ä Ë Ì Í Î Ï ì í î

ï ñ ò ó ô õ ö ù ú

Û Ü Ý ÿ €

# Trixie Complete - Regular

## Uppercase Characters

A B C D E F G H I J K  
L M N O P Q R S T U  
V W X Y Z

## Lowercase Characters

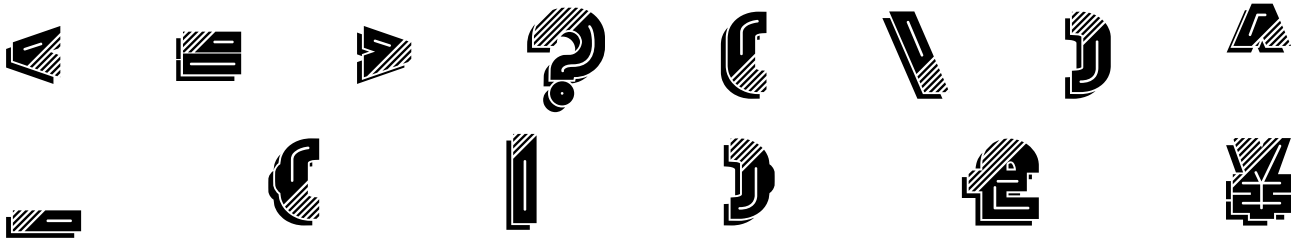
A B C D E F G H I J K  
L M N O P Q R S T U  
V W X Y Z

## Numbers

0 1 2 3 4 5 6 7 8 9

## Punctuation and Symbols

! " # \$ % & ' ( )  
, - . : ;



All Other Glyphs



