

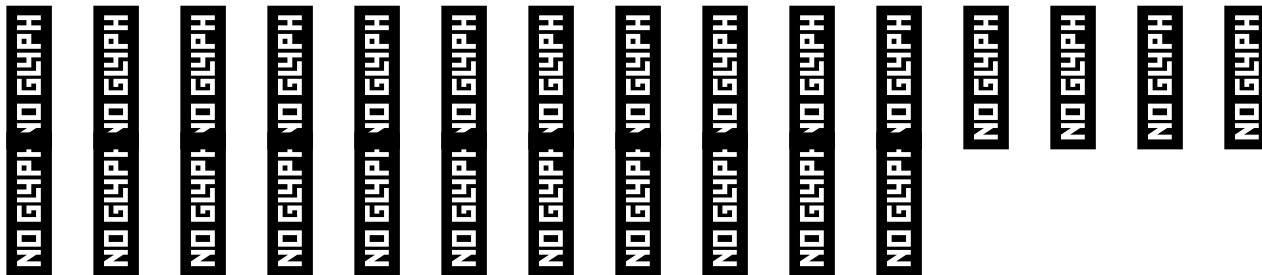


FONT SPECIFICATION

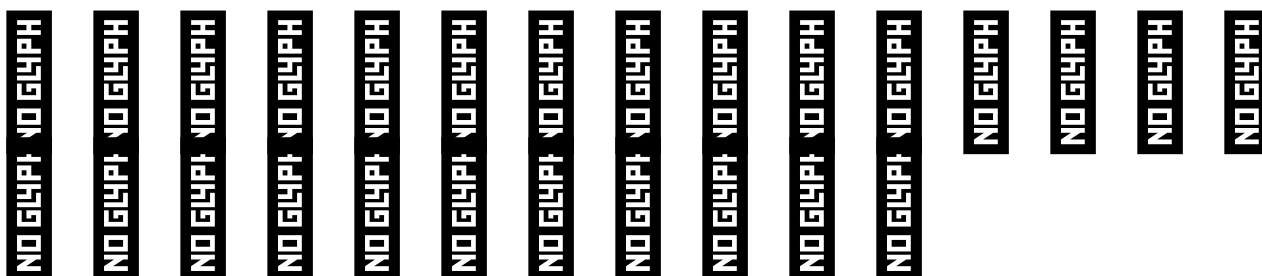
Mostaqbali - Arabic Font

Mostaqbali Normal - Regular

Uppercase Characters



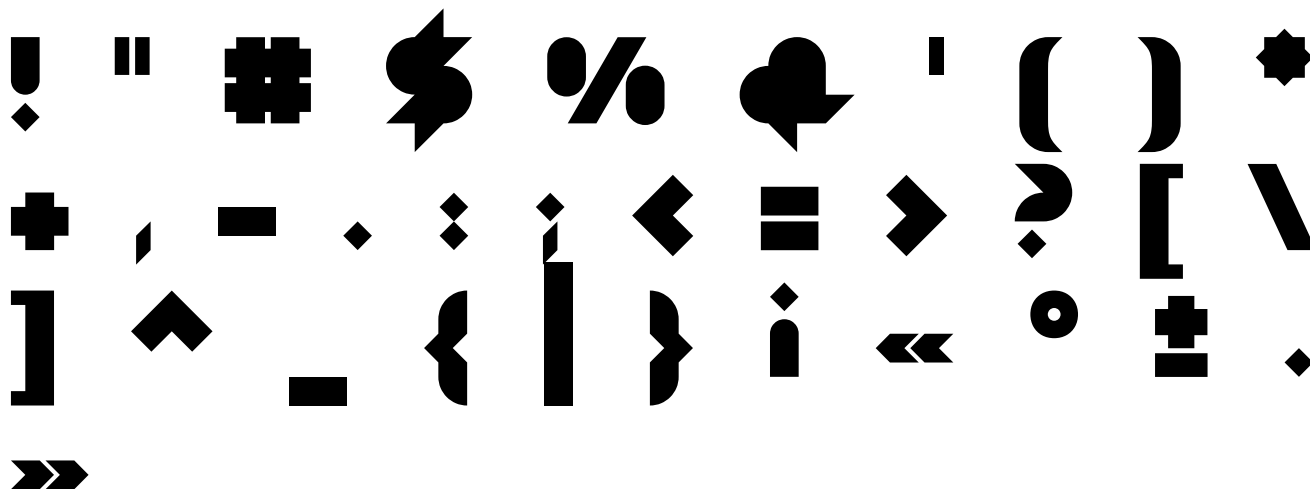
Lowercase Characters



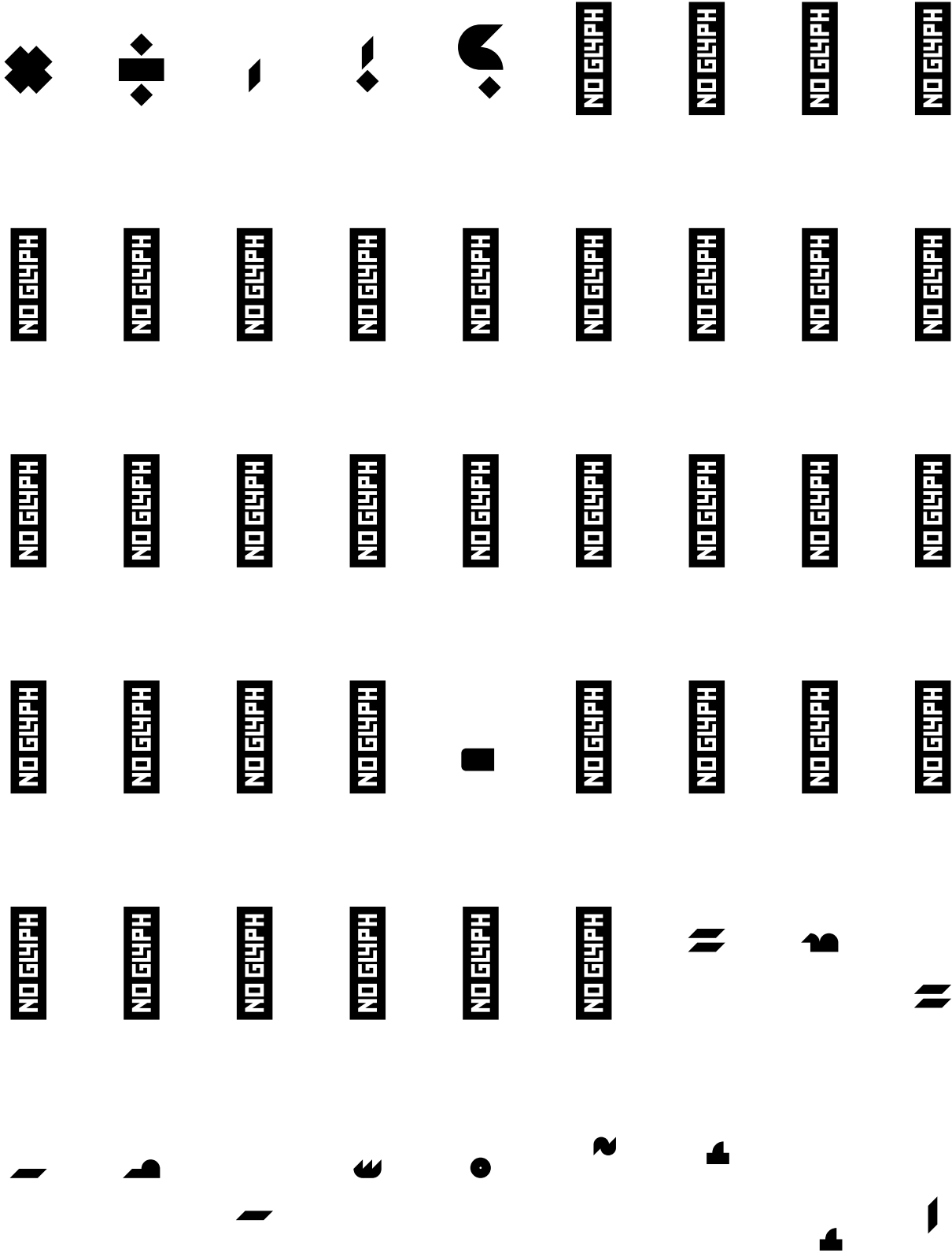
Numbers

0 1 2 3 4 5 6 7 8 9

Punctuation and Symbols



All Other Glyphs



◆ | ↶ ↷ ↸ ↹ ↺ ↻ ↷ ↶

↶ ↷ ↸ ↹ ↺ ↻ ↷ ↶ NO GLYPH

NO GLYPH NO GLYPH ↶ ↷ ↸ ↹ ↺ ↻ ↷ ↶

“ ” „ • … % ‹ › ⁄

↶ ↷ ↸ ↹ ↺ ↻ ↷ ↶

↶ ↷ ↸ ↹ ↺ ↻ ↷ ↶

↶ ↷ ↸ ↹ ↺ ↻ ↷ ↶

ق پ پ ا ح ح خ

ف ف چ چ چ . .

ه ا ا ا على الله وسلم و

ة پ پ ب ا ا ا ا

ت ت ت ش ش ش چ چ چ

ح ح ح خ خ خ ز ز ز

ص ص ص ش ش ش ص ص ص ز

ظ ظ ظ ظ ط ط ط ظ ظ

ظ ظ ظ ظ ظ ظ ظ ظ

ظ ظ ظ ظ ظ ظ ظ ظ

ظ ظ ظ ظ ظ ظ ظ ظ

ظ ظ ظ ظ ظ ظ ظ ظ

ظ ظ ظ ظ ظ NO GLYPH