

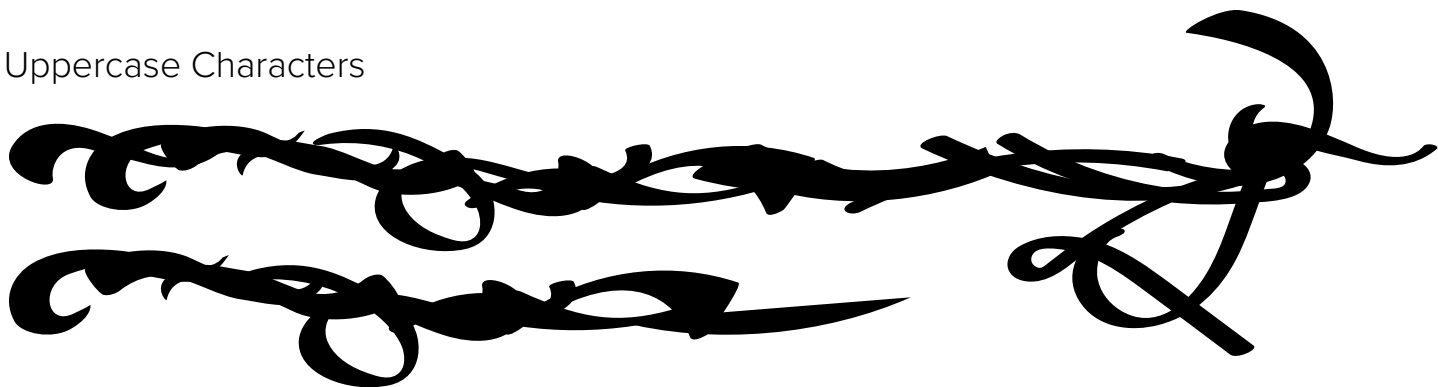


FONT SPECIFICATION

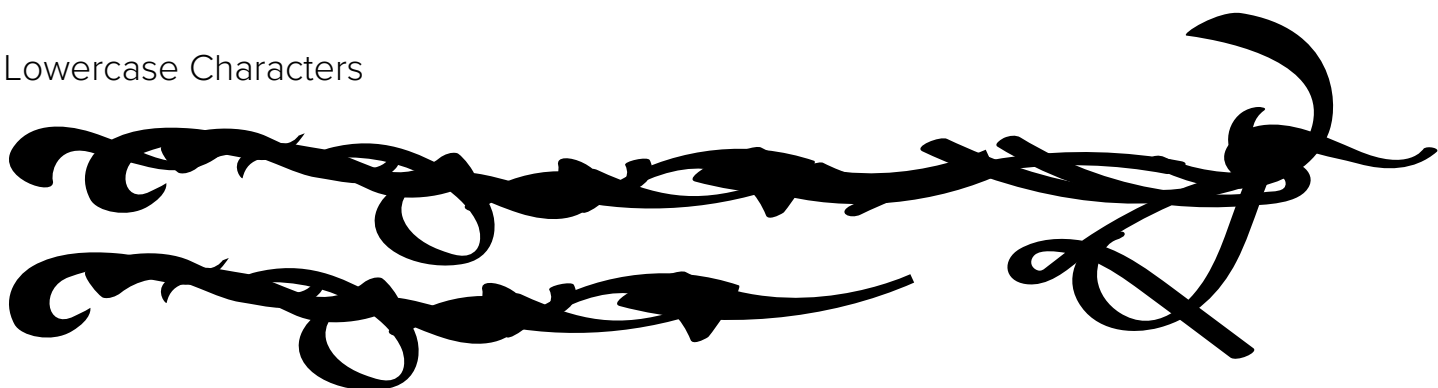
# Kafka Typeface Updates

# Kafka Swash - Regular

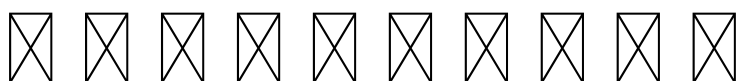
## Uppercase Characters



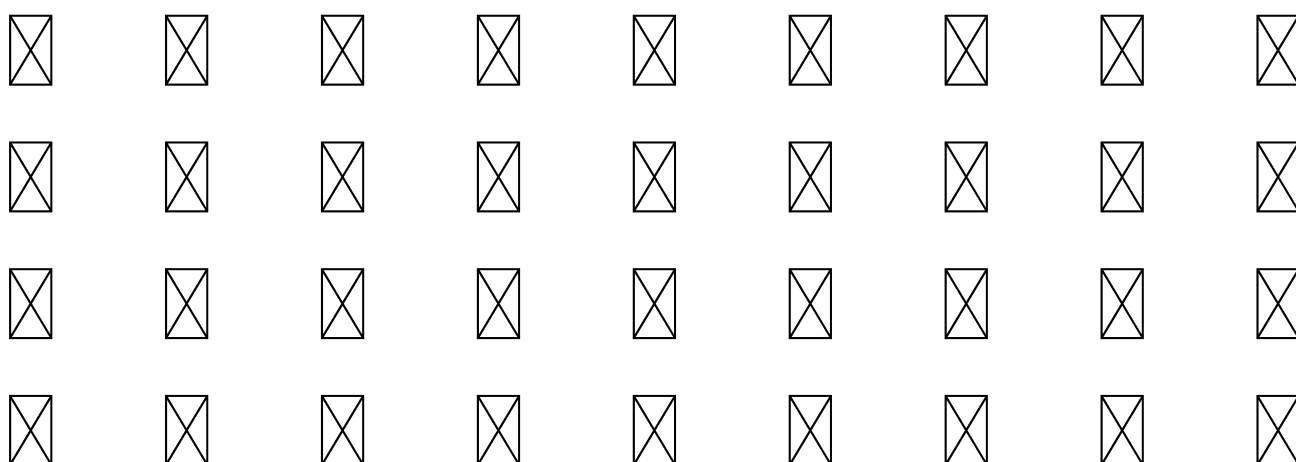
## Lowercase Characters

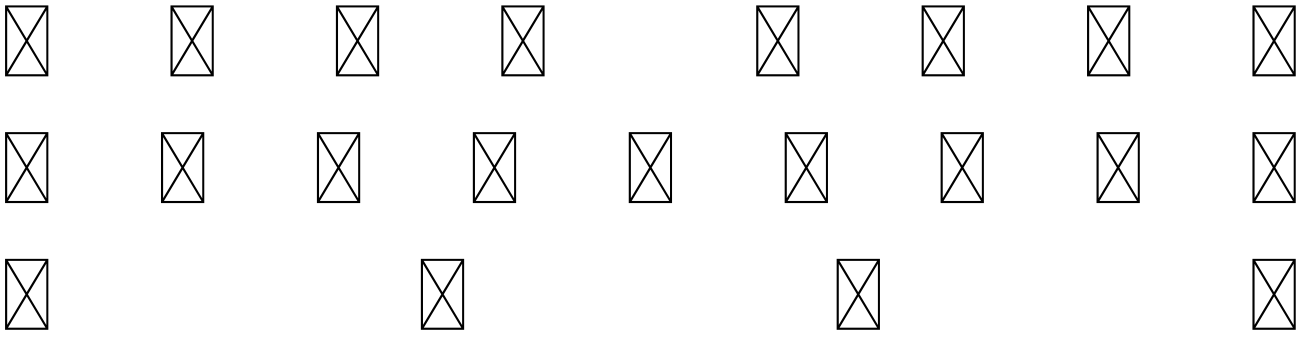


## Numbers

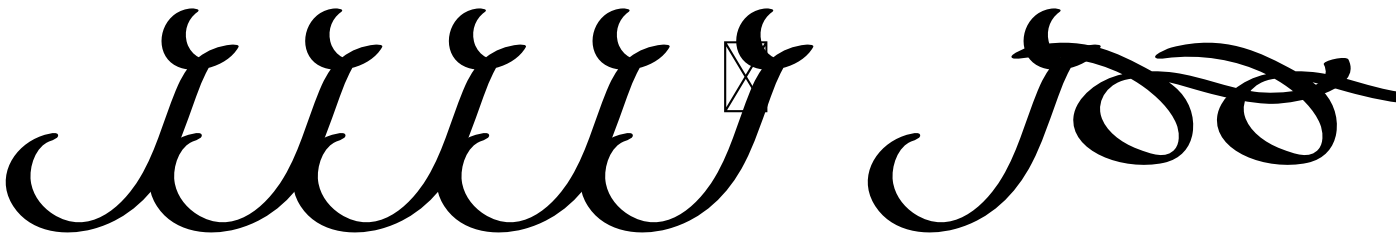
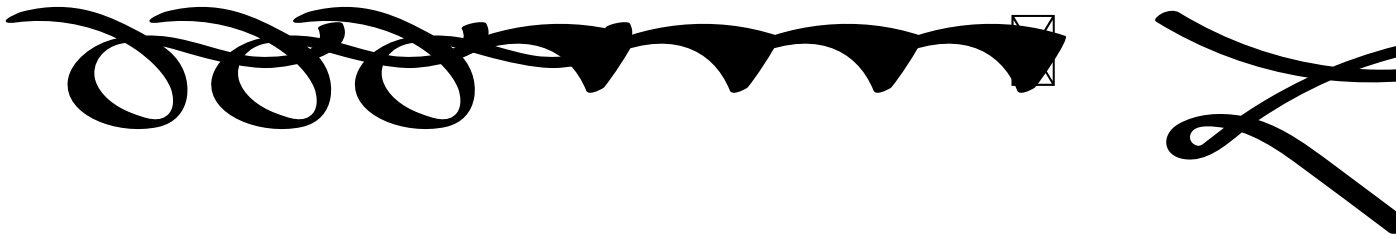


## Punctuation and Symbols





All Other Glyphs





# Kafka Clean - Regular

## Uppercase Characters

A B C D E F G H I J K L M N O P Q  
R S T U V W X Y Z

## Lowercase Characters

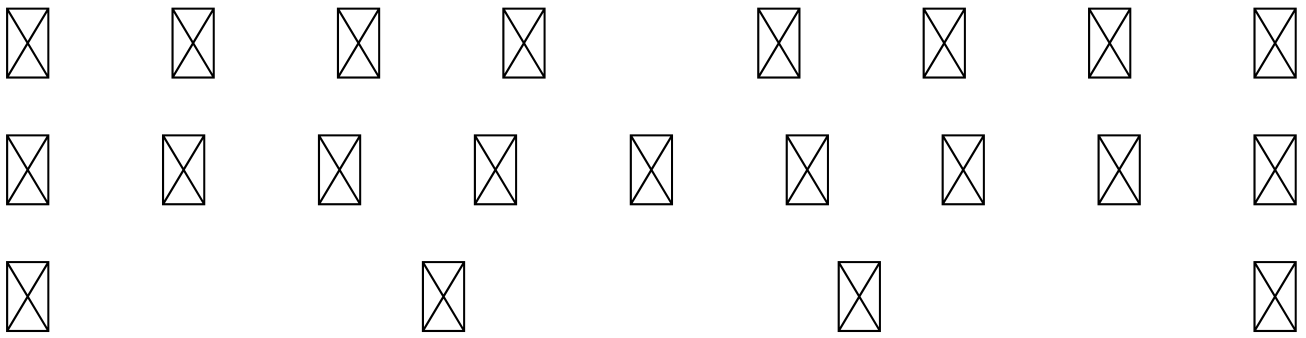
a b c d e f g h i j k l m n o p q  
r s t u v w x y z

## Numbers

0 1 2 3 4 5 6 7 8 9

## Punctuation and Symbols

! " # \$ % & ' ( )  
\* + , - . : ; < =  
> ? [ \ ] ^ \_ { ☒  
} ☒ ☒ ☒ ☒ ☒ ☒ ☒ ☒



All Other Glyphs

*À Á Â Ã Ä Å* ☒ *ç è*

*é ê ë ì í î ï* ☒ *Ń*

*ø ò ó ô õ* ☒ *ö ù ú*

*ü û ý* ☒ *š à á â ã*

*ä å* ☒ *ç è é ê ë ì*

***i i i*** ☒ ***u o o o o***

***o*** ☒ ***o u u u u y*** ☒

***y***

# Kafka - Regular

## Uppercase Characters

A B C D E F G H I J K L M N O P Q  
R S T U V W X Y Z

## Lowercase Characters

a b c d e f g h i j k l m n o p q  
r s t u v w x y z

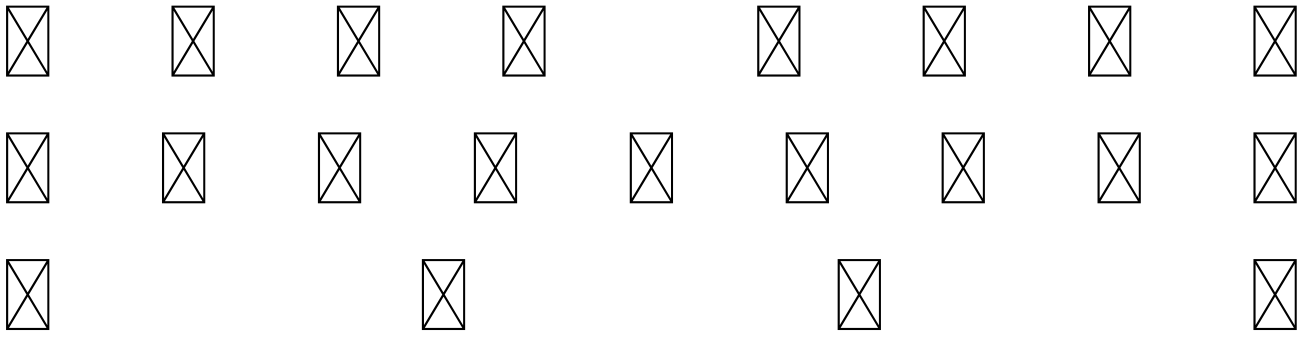
## Numbers

0 1 2 3 4 5 6 7 8 9

## Punctuation and Symbols

! " # \$ % & ' ( )  
\* + , - . : ; < =  
> ? [ \ ] ^ \_ { ☒  
} ☒ ☒ ☒ ☒ ☒ ☒ ☒ ☒





All Other Glyphs

*À Á Â Ã Ä Å* ☒ *ç È*

*É Ê Ë Ì Í Î Ï* ☒ *Ń*

*Ð Ñ Ò Ó Ô* ☒ *Ũ Ú*

*Û Ü Ý* ☒ *ı á â ã*

*ä å* ☒ *ç è é ê ë ì*

*i i i* ☒ *n o o o o*

*o* ☒ *o u u u u y* ☒

*y*