



FONT SPECIFICATION

Capella

Capella Plain - Regular

Uppercase Characters

A B C D E F G H I J K L M N O P Q
R S T U V W X Y Z

Lowercase Characters

A B C D E F G H I J K L M N O P Q
R S T U V W X Y Z

Numbers

0 1 2 3 4 5 6 7 8 9

Punctuation and Symbols

! " # \$ % & ' () * + , - . : ;
[\] ^ _ ` { | } ~
¡ ¢ £ ¤ ¥ ¦ § ¨ © ª « ¬ ® ¯ ° ± ² ³ ´ µ ¶ · ¸ ¹ º » ¼ ½ ¾



NO GLYPH



NO GLYPH

NO GLYPH

-

NO GLYPH

NO GLYPH

NO GLYPH

NO GLYPH

,

NO GLYPH

NO GLYPH

.

NO GLYPH

NO GLYPH

NO GLYPH



NO GLYPH

NO GLYPH

NO GLYPH

All Other Glyphs

À Á Â Ã Ä Å Æ Ç È

É Ê Ë Ì Í Î Ï Ð Ñ

Ò Ó Ô Õ Ö **NO GLYPH** Ø Ù Ú

Û Ü Ý Þ ß à á â ã

ä å æ ç è é ê ë ì

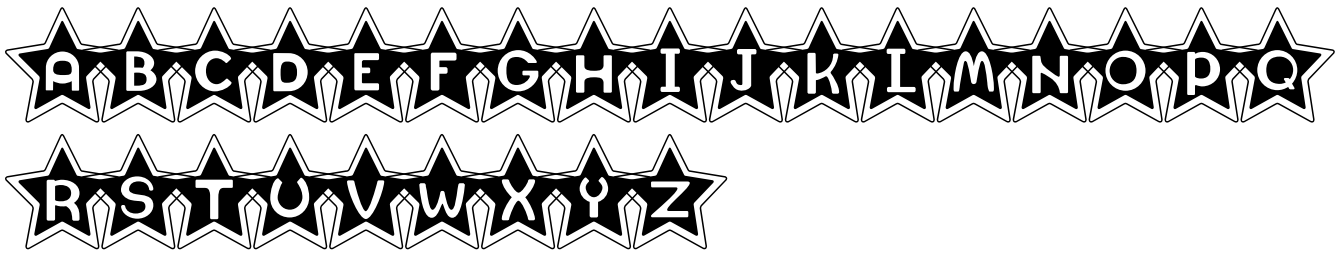
í î ï ð ñ ò ó ô õ

ö **NO GLYPH** ø ù ú û ü ý þ

ÿ

Capella Stars - Regular

Uppercase Characters



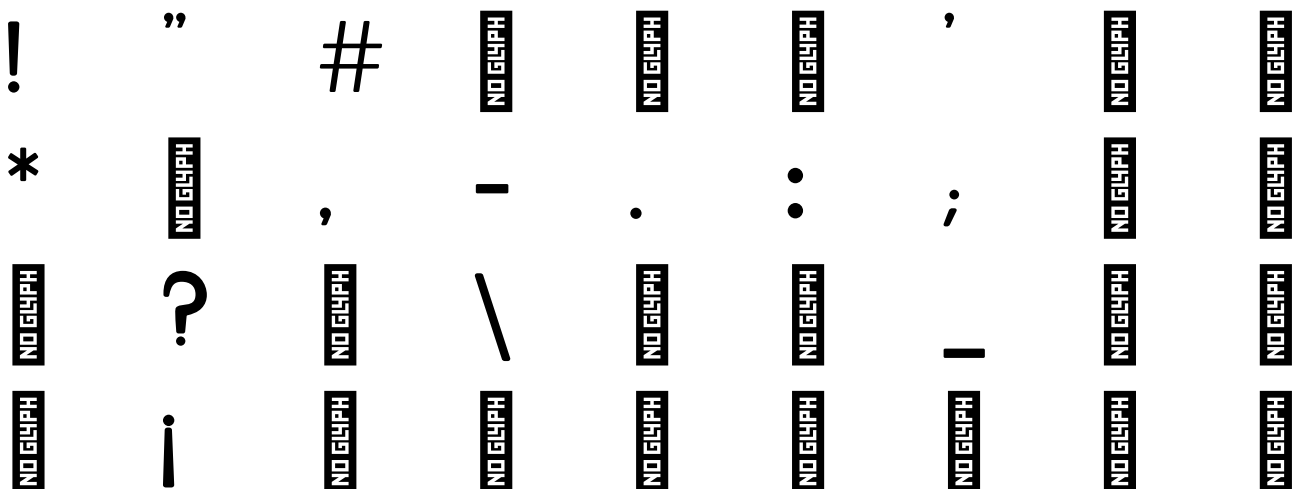
Lowercase Characters



Numbers



Punctuation and Symbols



NO GLYPH NO GLYPH << NO GLYPH NO GLYPH NO GLYPH NO GLYPH NO GLYPH
 NO GLYPH NO GLYPH NO GLYPH NO GLYPH NO GLYPH NO GLYPH NO GLYPH NO GLYPH NO GLYPH
 >> NO GLYPH NO GLYPH NO GLYPH NO GLYPH NO GLYPH NO GLYPH NO GLYPH NO GLYPH NO GLYPH

All Other Glyphs

NO GLYPH	NO GLYPH	NO GLYPH	NO GLYPH	NO GLYPH	NO GLYPH	NO GLYPH	NO GLYPH	NO GLYPH
NO GLYPH	NO GLYPH	NO GLYPH	NO GLYPH	NO GLYPH	NO GLYPH	NO GLYPH	NO GLYPH	NO GLYPH
NO GLYPH	NO GLYPH	NO GLYPH	NO GLYPH	NO GLYPH	NO GLYPH	NO GLYPH	NO GLYPH	NO GLYPH
NO GLYPH	NO GLYPH	NO GLYPH	NO GLYPH	NO GLYPH	NO GLYPH	NO GLYPH	NO GLYPH	NO GLYPH
NO GLYPH	NO GLYPH	NO GLYPH	NO GLYPH	NO GLYPH	NO GLYPH	NO GLYPH	NO GLYPH	NO GLYPH

NO GLYPH

NO GLYPH

NO GLYPH

NO GLYPH

NO GLYPH

NO GLYPH

NO GLYPH

NO GLYPH

NO GLYPH

NO GLYPH

NO GLYPH

NO GLYPH

NO GLYPH

NO GLYPH

NO GLYPH

NO GLYPH

NO GLYPH

NO GLYPH

NO GLYPH

Capella Plain - Regular

Uppercase Characters

A B C D E F G H I J K L M N O
P Q R S T U V W X Y Z

Lowercase Characters

A B C D E F G H I J K L M N O P Q R
S T U V W X Y Z

Numbers

0 1 2 3 4 5 6 7 8 9

Punctuation and Symbols

! " # \$ % & ' * , - . : ;
? \ ^ _ ` ¡ ¢ £ ¤ ¥ ¦ § ¨ ©
« ¬ ® ¯ ° ± ² ³ ´ µ ¶ · ¸ ¹ º »

All Other Glyphs

À Á Â Ã Ä Å Æ Ç È

É Ê Ë Ì Í Î Ï Ð Ñ

Ò Ó Ô Õ Ö Ø Ù Ú Û

Ü Ý Þ ß à á â ã ä

å æ ç è é ê ë ì í

î ï ð ñ ò ó ô õ ö

ø ù ú û ü ý þ ÿ œ

Œ Ŵ ŵ Ŷ ŷ Ÿ ^ ˇ ˘

• ° ~ ¨ \ / ^ ~
˘

– ˘ • ¨ ° ¨ ˇ ‘ ,

˘ ˘ Ŵ ŵ Ŷ ŷ Ÿ Ź SS

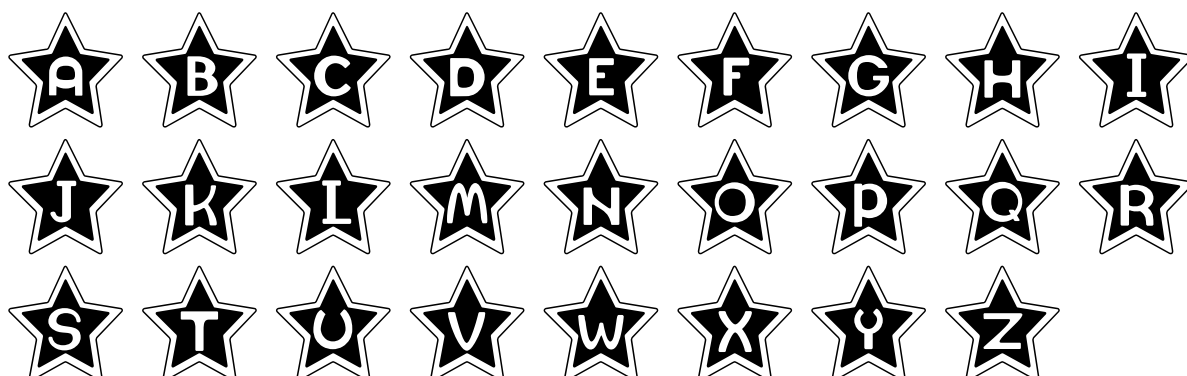
Ŷ ŷ – — ‘ ’ , “ ”

, • • < > € ™ ★ ☆

★ ☆☆☆ ☆☆☆ Ⓢ ★ NO GLYPH

Capella Stars - Regular

Uppercase Characters



Lowercase Characters



Numbers



Punctuation and Symbols



All Other Glyphs

— — ‘ ’ , “ ” , •

• < > 🚀 🚀 🚀 ★ ☆ ☆

☆☆☆ ☆☆☆ ⚫ ☆ ✨ ☆8 ☆5 ☆4 ☆9

☆1 ☆7 ☆6 ☆3 ☆2 ☆0 NO GLYPH