



FONT SPECIFICATION

Aqilah

# Aqilah - Regular

## Uppercase Characters

A B C D E F G H I J K L  
M N O P Q R S T U V W  
X Y Z

## Lowercase Characters

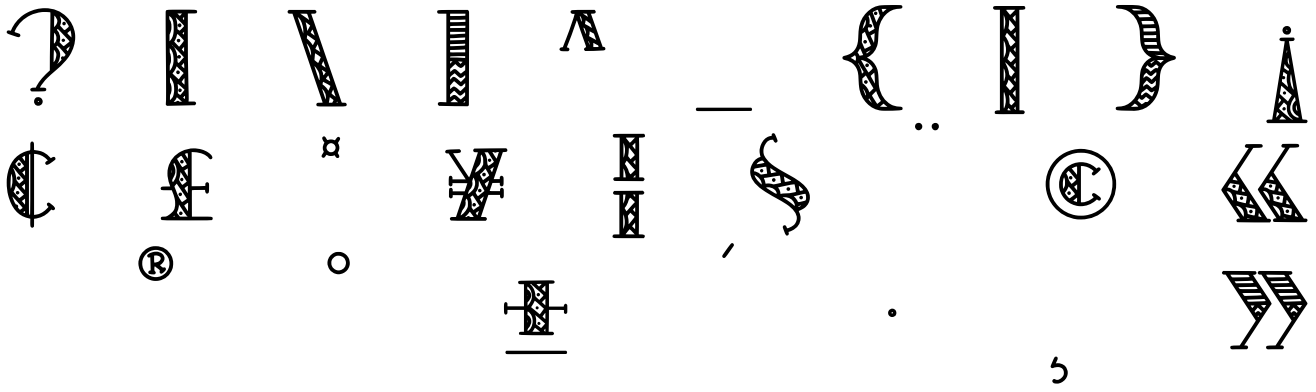
A B C D E F G H I J K L  
M N O P Q R S T U V W X  
Y Z

## Numbers

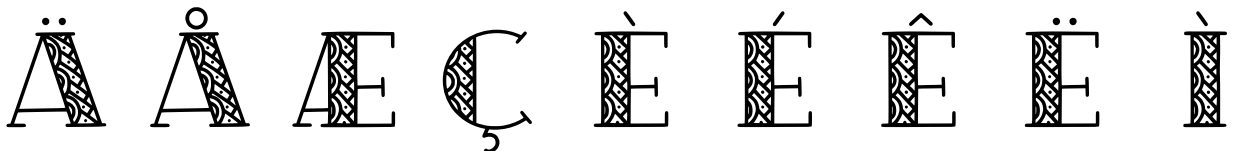
0 1 2 3 4 5 6 7 8 9

## Punctuation and Symbols

! " # \$ % & ' ( )  
\* + , - . : ; < = >



All Other Glyphs



Í Î Ï Ð Ñ Ò Ó Ô Õ

Ö ÷ Ø Ù Ú Û Ü Ý Þ

ÿ œ ø š š Ÿ ž ž ^

˘ ˚ ˜ ˙ ˚ ˛ ˜ ˜

™ € € ™ • F I O R

Z [geometric patterns] [?] [flourish]