



FONT SPECIFICATION

Maroon And Black

Maroon And Black - Regular

Uppercase Characters

A B C D
E F G H
I J K L
M N O P
Q R S T
U V W X Y Z

Lowercase Characters

a b c d e f
g h i j k l
m n o p q r s
t u v w x y z

Numbers

0 1 2 3 4 5 6

Punctuation and Symbols

! " # \$ % & ' () * + , - . / : ; < = > ? @ [\] ^ _ ` { | } ~ ¡ ¢ £ ¤ ¥ ¦ § ¨ © ª « ¬ ® ¯ ° ± ² ³ ´ µ ¶ · ¸ ¹ º » ¼ ½

All Other Glyphs

À Á Â Ã Ä Å Æ Ç È

É Ê Ë Ì Í Î Ï Ð Ñ

Ò Ó Ô Õ Ö Ø Ù Ú

Û Ü Ý Þ ß à á â ã

ä å æ ç è é ê ë ì

í î ï ð ñ ò ó ô õ

ö ÷ ø ù ú û ü ý þ

ÿ ä å æ ç
ø ö ð ò
đ ē ě é e
ě ô õ ö ø
đ ħ ĩ ĩ ĩ
ı ĩ ĩ ĩ ĩ ĩ
ħ ł ľ ľ ľ ľ

I I I I I I I I I I I I
O O O O O O O O O O O O
R R R R R R R R R R R R
S S S S S S S S S S S S
T T T T T T T T T T T T
U U U U U U U U U U U U
V V V V V V V V V V V V
Y Y Y Y Y Y Y Y Y Y Y Y

S j ^ ˇ ˘ ˙ ˚
ˆ ˇ ˘ ˙ ˚

— — ‘ ’ “ ” †
, , , ,

≠ • % ‰ > / F E

P I E L TM O O N I

Σ − ∕ ∙ √ ∞ ∣ = ≠

≤ ≥ ◊ − T T N Y
, , ,

ANDORRAN

SPIRITUALITY

UNPARSED

FRANCIS

SHOEFIELD

if did other

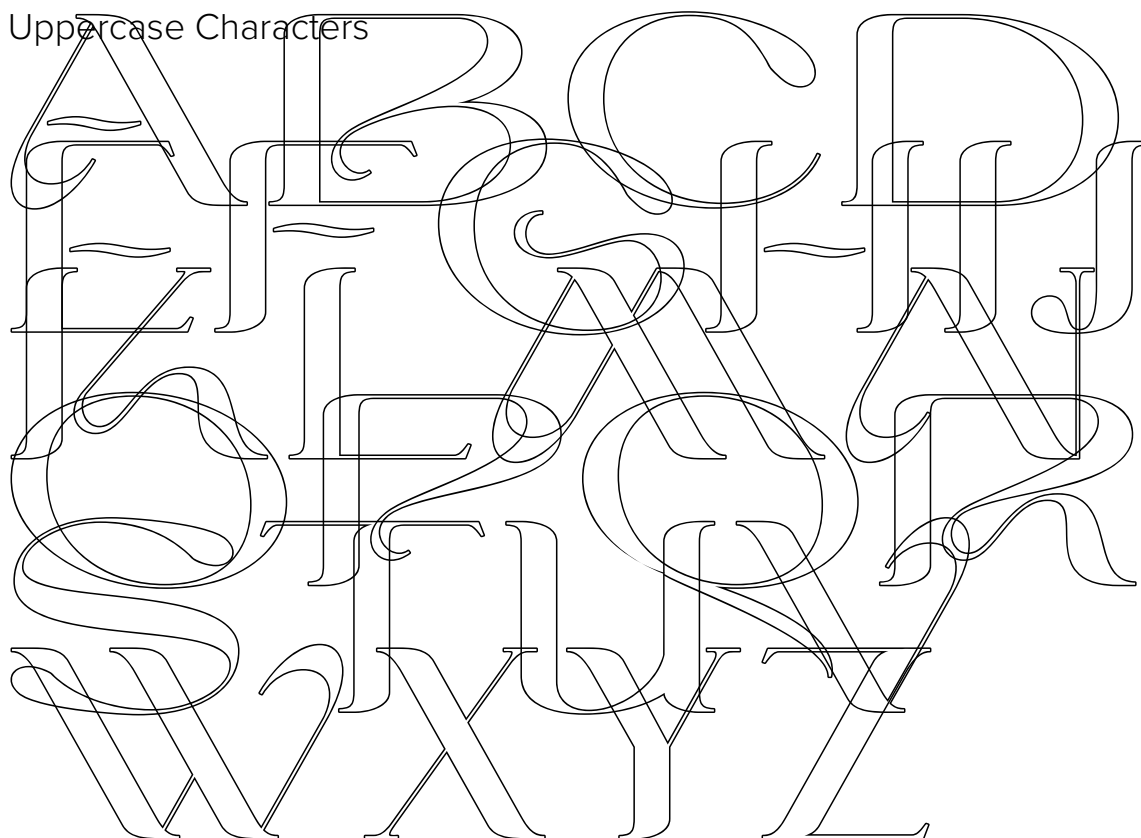
of the can

the do in ch au

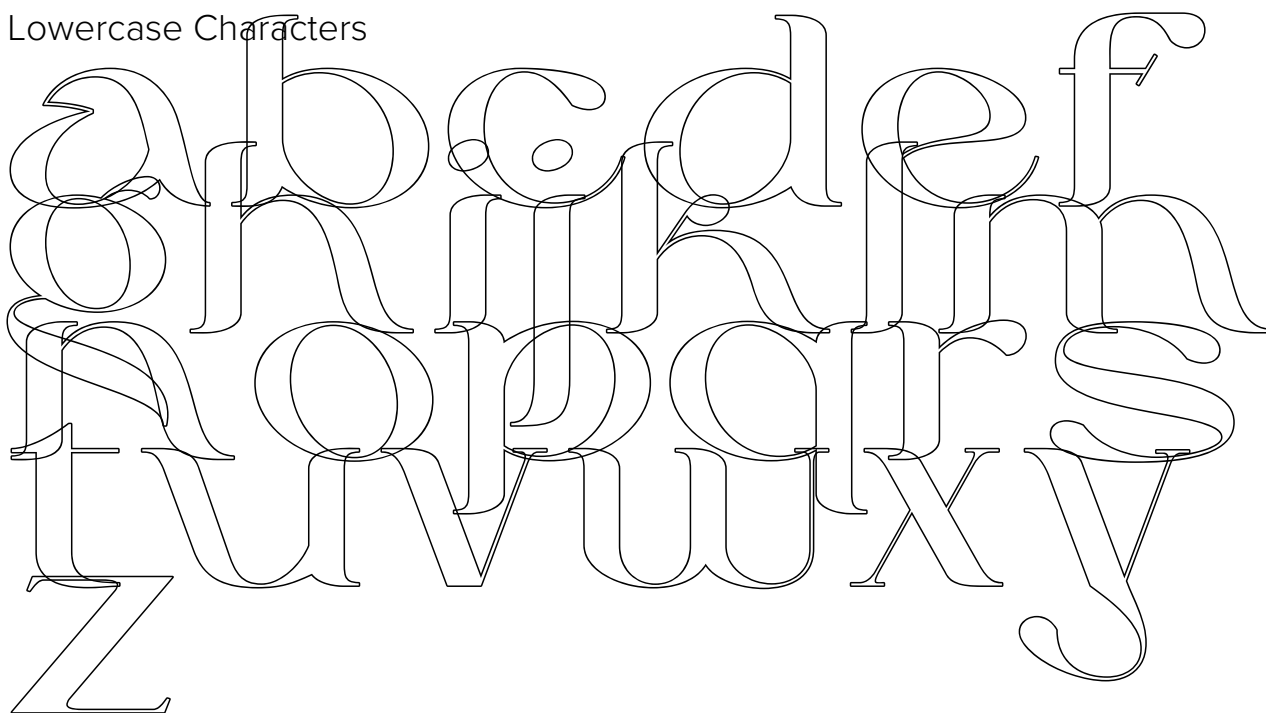
ff fff ffff fffff

Maroon And Black Outline - Regular

Uppercase Characters



Lowercase Characters



Numbers

9 0 1 2 3 4 5 6

Punctuation and Symbols

& ' # \$ %
+ = > < [] ^ _ ` { | } ~
€ £ © ®
+ 1 0 > M 1
3 4 5 / 4 / 2

All Other Glyphs

À Á Â Ã Ä Å Æ Ç È

É Ê Ë Ì Í Î Ï Ð Ñ

Ò Ó Ô Õ Ö × Ø Ù Ú

Û Ü Ý Þ ß à á â ã

ä å æ ç è é ê ë ì

í î ï ð ñ ò ó ô õ

ö ÷ ø ù ú û ü ý þ

ÿ Ä å Å Ö Ø
Œ œ É ě Ę Ę
É œ Œ Œ Œ Œ
ğ ħ ħ ĩ ĩ ĩ
ı ĩ ĩ ĩ ĩ ĩ ĩ
ħ ħ ħ ħ ħ ħ

I J K L M N O P Q R S T U V W X Y Z
i j k l m n o p q r s t u v w x y z
I J K L M N O P Q R S S S S S S S
S S S S S S T t T t T t
T t U u U u U u U u
V v W w W w W w Y y Y y
Y y Z z Z z Z z Z z z z

Stylized 'S' and 'i' characters, various decorative flourishes, and a row of calligraphic letters including 'N', 'W', 'M', 'A', and 'U'.

Decorative horizontal lines, various punctuation marks like apostrophes and quotes, and a cross symbol.

Decorative symbols including a cross-like symbol, circles, and stylized letters 'F' and 'E'.

Large stylized letters 'P', 'E', 'S', 'E', 'L', 'T', 'M', 'O', 'E', 'D', 'M', 'T'.

Stylized Greek letter 'Sigma', a slash, a diamond, a square root symbol, an infinity symbol, and mathematical symbols like equals and not equals.

Stylized letters 'L', 'G', 'D', 'T', 'W', 'Y' and various punctuation marks like apostrophes.

WINDY RAINY DAY

SUNSHINE AND FUN

LAZY AFTERNOON

FRIDAY NIGHTS

SHOW UP FOR

IT ALL IN ONE

GET THE MOST

a b c n i o i a n u t h

f f f f f f f f f f