

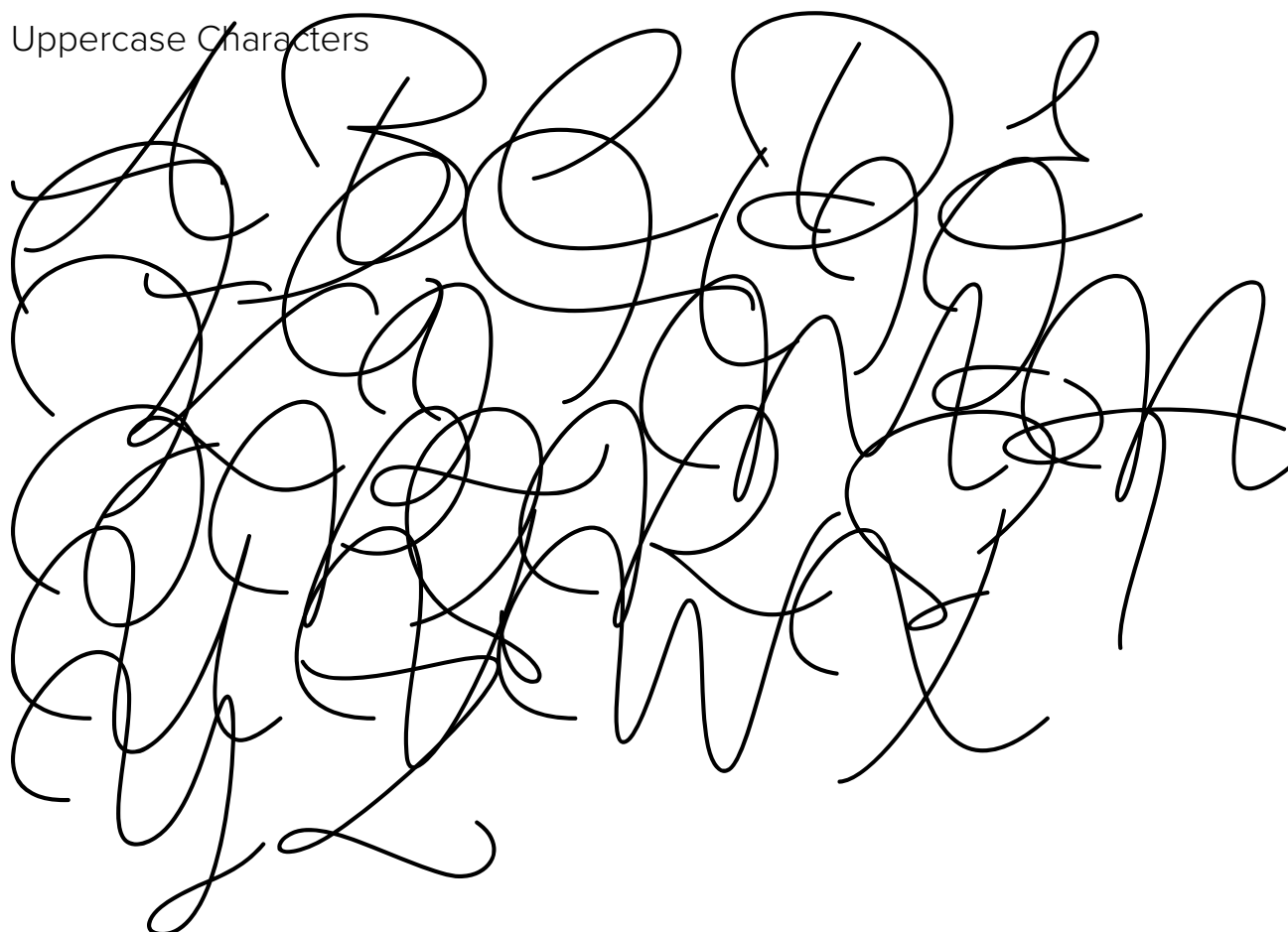


FONT SPECIFICATION

# Emmanuella Signature Font

# Emmanuela Saragih - Regular

Uppercase Characters



Lowercase Characters

a b c d e f g h i j k l m n o p q r s t  
u v w x y z

Numbers

0 1 2 3 4 5 6 7 8 9

Punctuation and Symbols

! " # \$ % & ' ( ) \* + , -  
 . : ; < = > ? [ \ ] ^ \_ { |  
 } ¡ ¢ £ ¤ ¥ ¦ § ¨ © ª « ¬  
 ® ¯ ° ± ² ³ ´ µ ¶ · ¸ ¹ º  
 » ¼ ½ ¾

All Other Glyphs

À Á Â Ã Ä Å Æ Ç È É  
 Ê Ë Ì Í Î Ï Ñ Ò Ó  
 Ô Õ Ö × Ø Ù Ú Û Ü  
 Ý Þ à á â ã

ä å æ ç è é ê ë ì

í î ï ð ñ ò ó ô õ

ö ÷ ø ù ú û ü ý þ

ÿ + œ Ÿ ^ ˇ - ˘

˙ ˚ ˛ ˜ ˝ ; — — ‘

‚ , “ ” „ † ‡ • …

< > / ₣ £ ₧ € № ™

∂ Δ Π Σ - / . √ ∞

| ≈ ≤ ≥ a b c d e

f g h i j k l m n

o p q r s t u v w

x y z a b c d e f

g h i j k l m n o

p q r s t u v w x

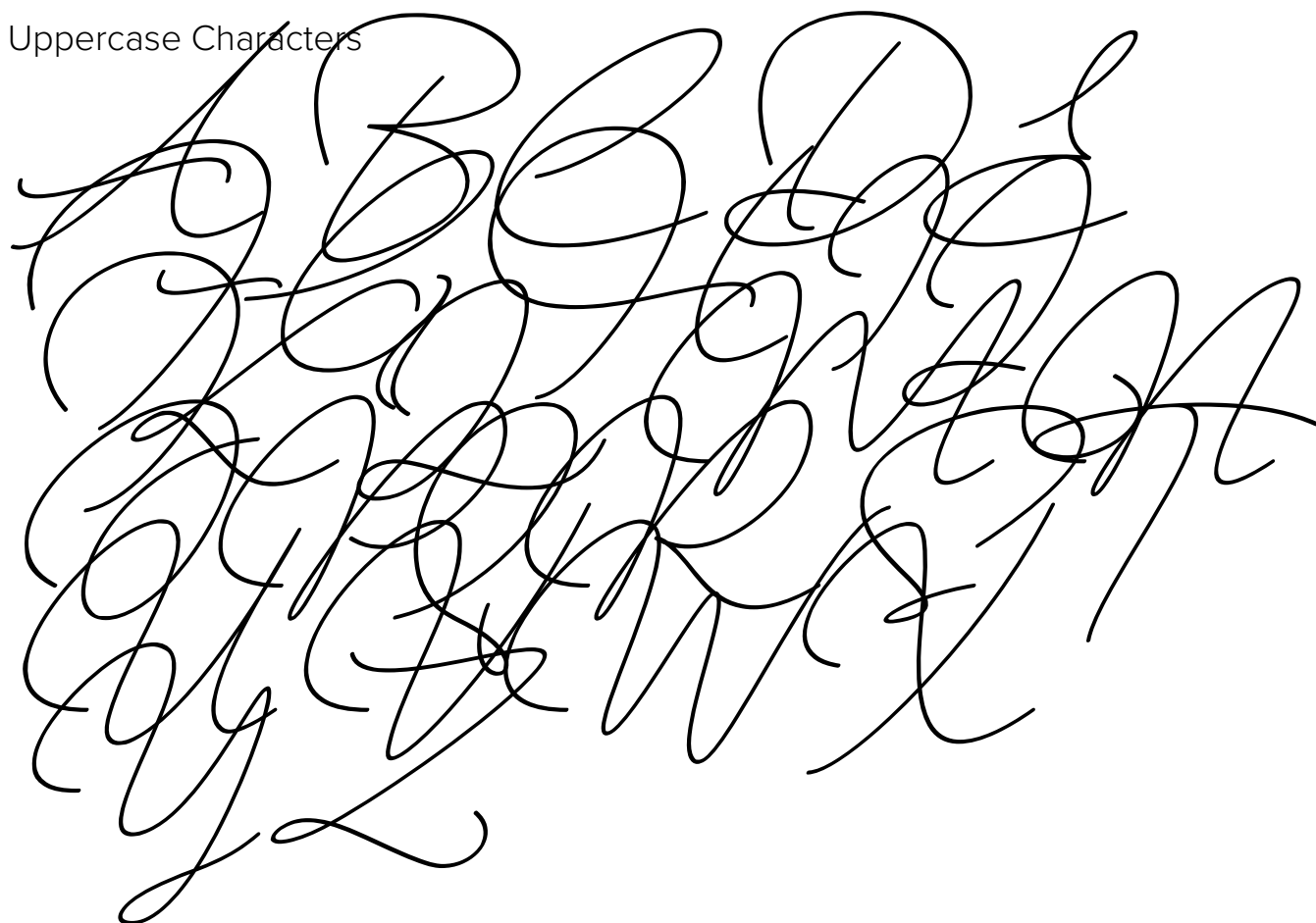
y z ee gg ll oo rr ss tt

th the ff pp st ar er ir or

ur ?

# Emmanuela Saragih - Regular

Uppercase Characters



Lowercase Characters

abcdefghijklmnopqrstuvwxyz  
vwxyz

Numbers

0123456789

Punctuation and Symbols

! " # \$ % & ' ( ) \* + , -  
 . : ; < = > ? [ \ ] ^ \_ { |  
 } ¡ ¢ £ ¤ ¥ ¦ § ¨ © ª « ¬  
 ® ¯ ° ± ² ³ ´ µ ¶ · ¸ ¹ º  
 » ¼ ½ ¾

All Other Glyphs

À Á Â Ã Ä Å Æ Ç È É  
 Ê Ë Ì Í Î Ï Ñ Ò Ó  
 Ô Õ Ö × Ø Ù Ú Û Ü  
 Ý Þ à á â ã



ä å æ ç è é ê ë ì

í î ï ð ñ ò ó ô õ

ö ÷ ø ù ú û ü ý ß

ÿ + œ Ÿ ' ˇ - ˘

˙ ˚ ˛ ˜ ˝ ; \_ — ‘

’ ‚ “ ” „ † ‡ • …

< > / F L P t s t € № ™

∂ Δ Π Σ - / . √ ∞

ı ≈ ≤ ≥ a b c d e

f g h i j k l m n

o p q r s t u v w

x y z a b c d e f

g h i j k l m n o

p q r s t u v w x

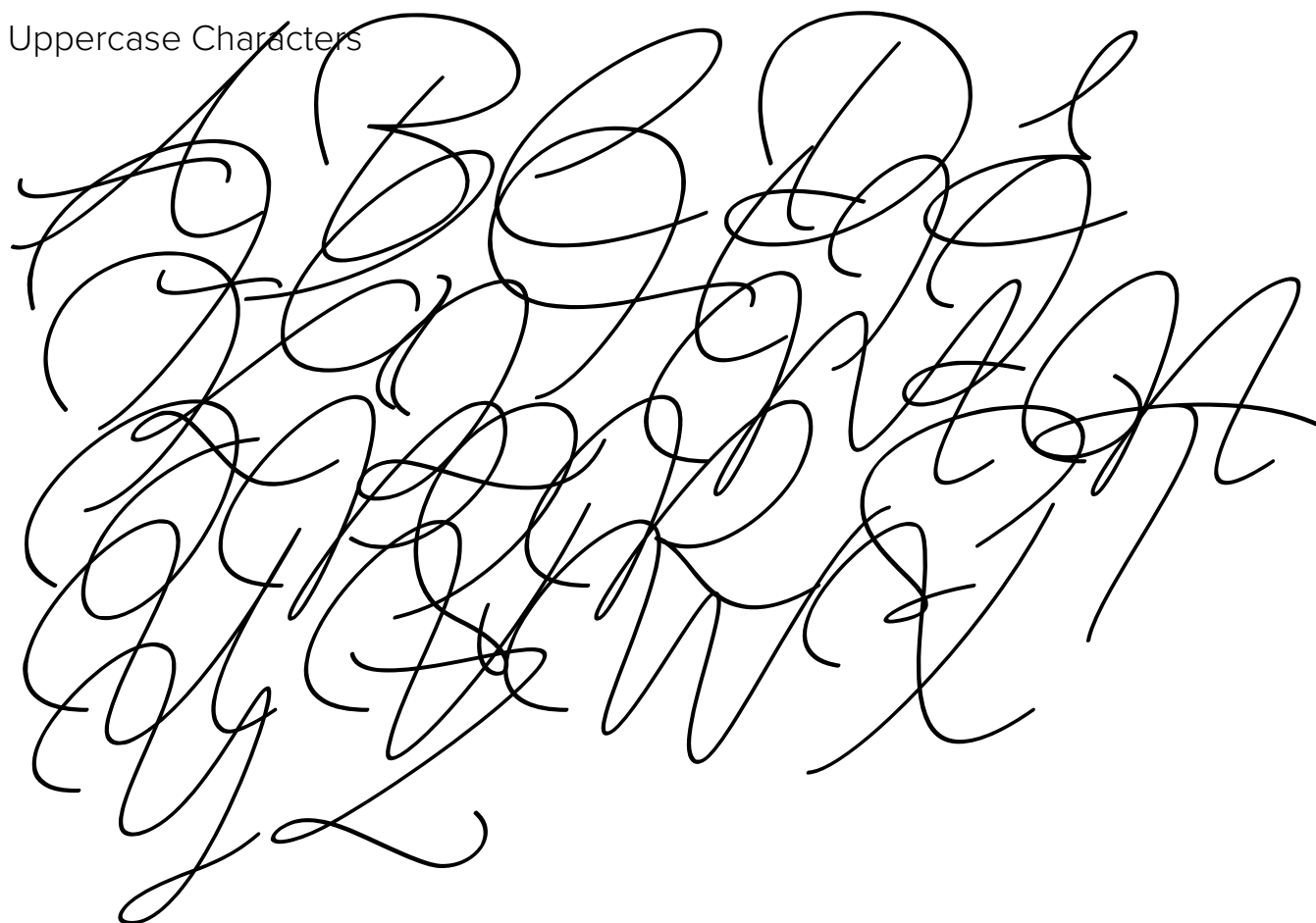
y z ee gg ll oo rr ss tt

th the ff pp st ar er ir or

ur ?

# Emmanuela Saragih - Regular

Uppercase Characters



Lowercase Characters

a b c d e f g h i j k l m n o p q r s t  
u v w x y z

Numbers

0 1 2 3 4 5 6 7 8 9

Punctuation and Symbols

! " # \$ % & ' ( ) \* + , -  
 . : ; < = > ? [ \ ] ^ \_ { |  
 } ¡ ¢ £ ¤ ¥ ¦ § ¨ © ª « ¬  
 ® ¯ ° ± ² ³ ´ µ ¶ · ¸ ¹ º  
 » ¼ ½ ¾

All Other Glyphs

A A A A A A A A  
 l l l l l l l l  
 o o o o o o o o  
 w w y ß à á â ã

ä å æ ç è é ê ë ì

í î ï ð ñ ò ó ô õ

ö ÷ ø ù ú û ü ý ß

ÿ + œ Ÿ ' ˇ - ˘

˙ ˚ ˛ ˜ ˝ ; \_ — ‘

’ ‚ “ ” „ † ‡ • …

< > / F L P t s t € № ™

∂ Δ Π Σ - / . √ ∞

ı ≈ ≤ ≥ a b c d e

f g h i j k l m n

o p q r s t u v w

x y z a b c d e f

g h i j k l m n o

p q r s t u v w x

y z ee gg ll oo rr ss tt

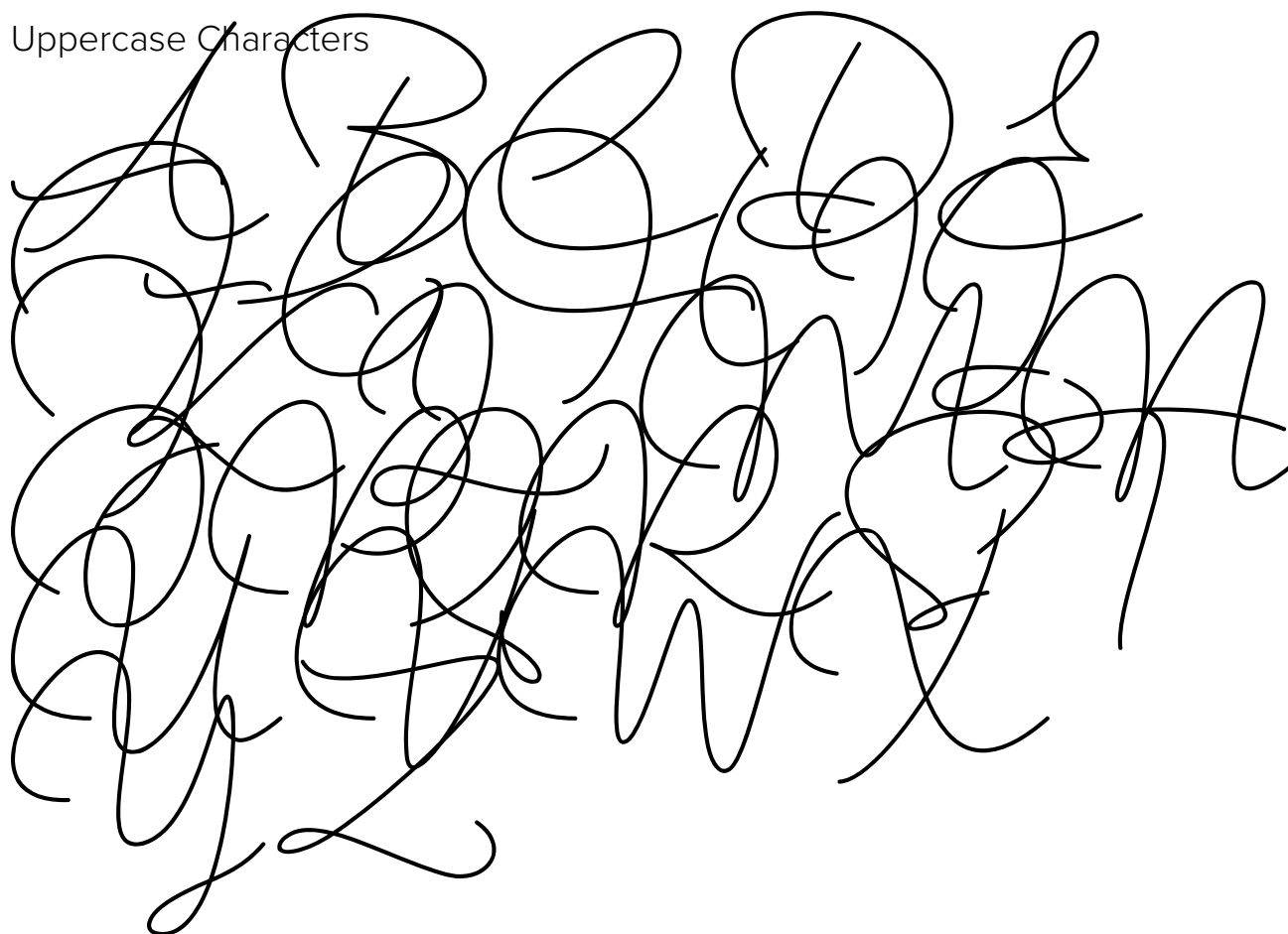
th the ff pp st ar er ir or

ur ?



# Emmanuela Saragih - Regular

Uppercase Characters



Lowercase Characters

a b c d e f g h i j k l m n o p q r s t  
u v w x y z

Numbers

0 1 2 3 4 5 6 7 8 9

Punctuation and Symbols

! " # \$ % & ' ( ) \* + , -  
 . : ; < = > ? [ \ ] ^ \_ { |  
 } ¡ ¢ £ ¤ ¥ ¦ § ¨ © ª « ¬  
 ® ¯ ° ± ² ³ ´ µ ¶ · ¸ ¹ º  
 » ¼ ½ ¾

All Other Glyphs

À Á Â Ã Ä Å Æ Ç È É  
 Ê Ë Ì Í Î Ï Ñ Ò Ó  
 Ô Õ Ö × Ø Ù Ú Û Ü  
 Ý Þ à á â ã

ä å æ ç è é ê ë ì

í î ï ð ñ ò ó ô õ

ö ÷ ø ù ú û ü ý þ

ÿ + œ Ÿ ^ ˇ - ˘

˙ ˚ ˛ ˜ ˝ ; — — ‘

‚ , “ ” „ † ‡ • …

< > / ₣ £ ₧ № ™

∂ Δ Π Σ - / . √ ∞

| ≈ ≤ ≥ a b c d e

f g h i j k l m n

o p q r s t u v w

x y z a b c d e f

g h i j k l m n o

p q r s t u v w x

y z ee gg ll oo rr ss tt

th the ff pp st ar er ir or

ur ?