



FONT SPECIFICATION

# Eu Alonira Modern Serif

# Eu Alonira - Regular

## Uppercase Characters

A B C D E F G H I J K  
L M N O P Q R S T  
U V W X Y Z

## Lowercase Characters

a b c d e f g h i j k l m  
n o p q r s t u v w x y  
z

## Numbers

0 1 2 3 4 5 6 7 8 9

## Punctuation and Symbols

! " # \$ % & ' ( ) \* +  
, - . : ; < = > ? [ \ ] ^

— { | } ¡ ¢ £ ¤ ¥ ¦ § ¨  
© ® ± ³

All Other Glyphs

À Á Â Ã Ä Å Æ Ç È

É Ê Ë Ì Í Î Ï Ð Ñ

Ò Ó Ô Õ Ö × Ø Ù Ú

Û Ü Ý Þ ß à á â ã

ä å æ ç è é ê ë ì

í î ï ð ñ ò ó ô õ

ö ÷ ø ù ú û ü ý þ

ÿ ˘ ˙ ˚ ˛ ˜ ˝ ˙ ˚ ˛

˘ ˙ ˚ ˛ ˜ ˝ ˙ ˚ ˛ €

™ AAUCLAE OXQ

RRRERIRRUgagik

ilimn j oænoorra

y a q j y

# Eu Alonira - Regular

## Uppercase Characters

A B C D E F G H I J K  
L M N O P Q R S T  
U V W X Y Z

## Lowercase Characters

a b c d e f g h i j k l m  
n o p q r s t u v w x y  
z

## Numbers

0 1 2 3 4 5 6 7 8 9

## Punctuation and Symbols

! " # \$ % & ' ( ) \* +  
, - . : ; < = > ? [ \ ] ^

— { | } ¡ ¢ £ ¤ ¥ ¦ § ¨  
© ® ± ³

All Other Glyphs

À Á Â Ã Ä Å Æ Ç È

É Ê Ë Ì Í Î Ï Ð Ñ

Ò Ó Ô Õ Ö × Ø Ù Ú

Û Ü Ý Þ ß à á â ã

ä å æ ç è é ê ë ì

í î ï ð ñ ò ó ô õ

ö ÷ ø ù ú û ü ý ß

ÿ ` ^ ~ - · ¨ °

ˇ ˘ ˙ ˚ ˛ ˜ €

™ AA C LA E O X Q

RR RERIRRU gagrik

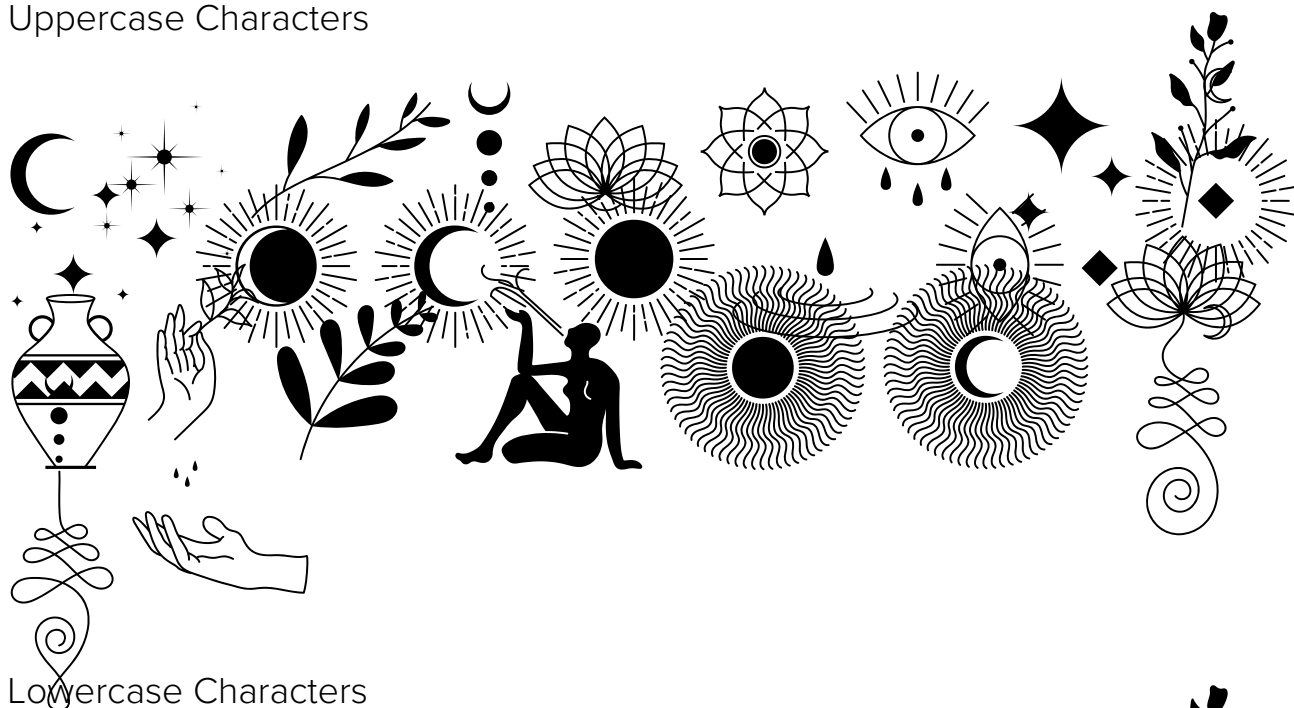
il inin j o æ n o r r a



*y a q j q y*

# Eu Alonira Icon - Regular

## Uppercase Characters



## Lowercase Characters



## Numbers

## Punctuation and Symbols

All Other Glyphs

