



FONT SPECIFICATION

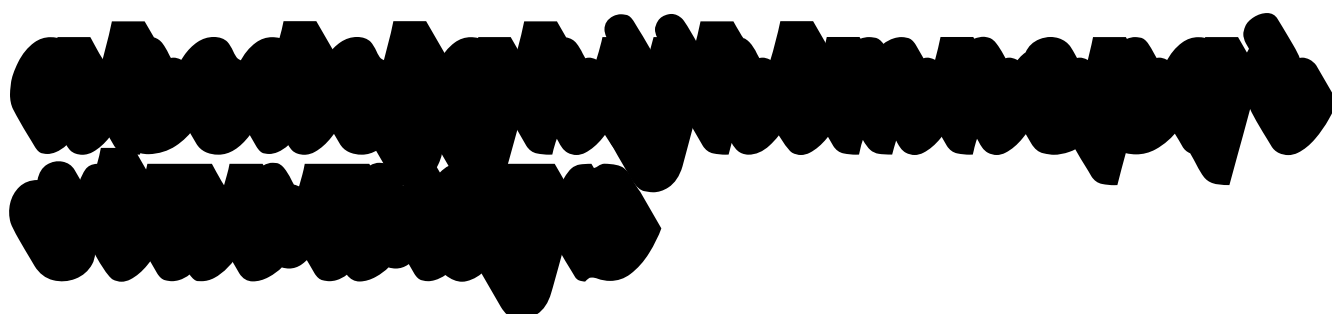
The Magniton - Retro Font

Magniton Extrude - Regular

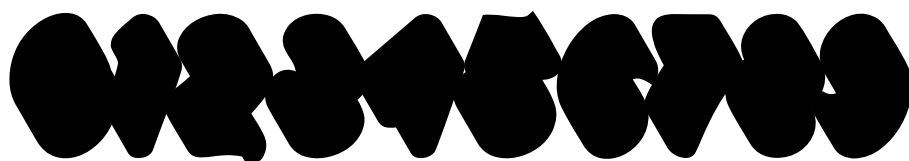
Uppercase Characters



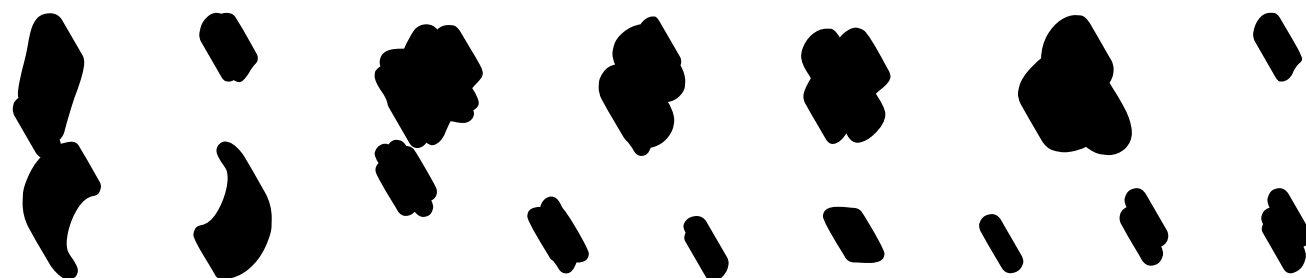
Lowercase Characters

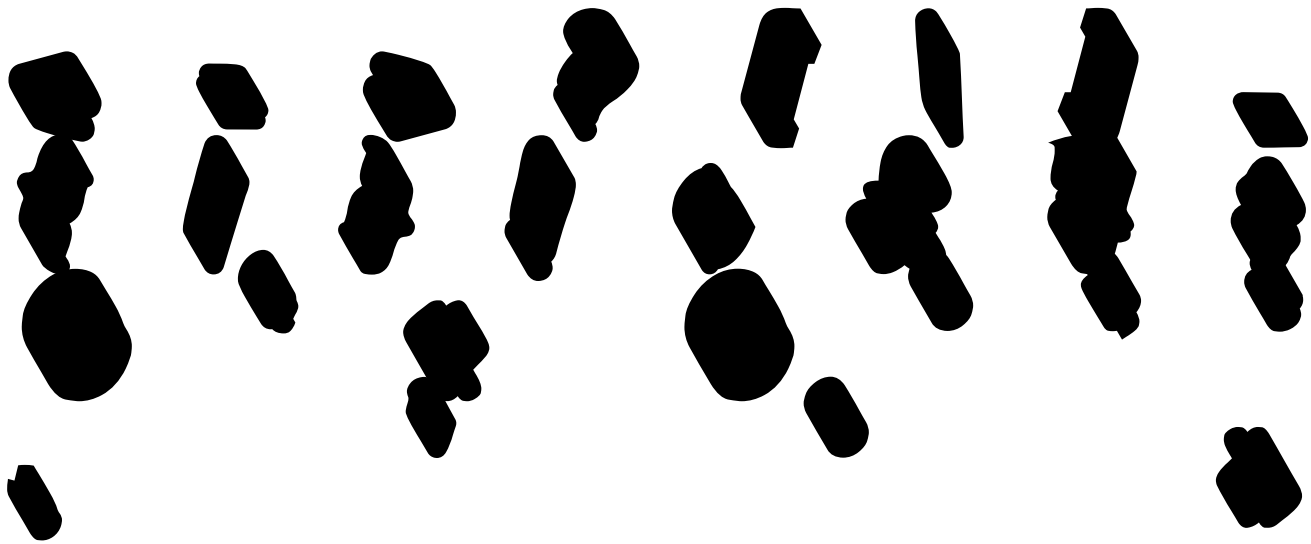


Numbers



Punctuation and Symbols





All Other Glyphs



Row 1: 9 stylized, rounded, black glyphs.

Row 2: 9 stylized, rounded, black glyphs, including a small cluster of three.

Row 3: 9 stylized, rounded, black glyphs, including a large cluster of four.

Row 4: 9 stylized, rounded, black glyphs, including a large cluster of three and several small, elongated shapes.

Row 5: 9 stylized, rounded, black glyphs, including a small cluster of three and several small, elongated shapes.

Row 6: 9 stylized, rounded, black glyphs, including a large cluster of four and several small, elongated shapes.

Row 7: 9 stylized, rounded, black glyphs, including a large cluster of four and several small, elongated shapes.

À Á Â Ã Ä Å Æ Ç È É

Ê Ë Ì Í Î Ï Ñ Ò Ó

Ô Õ Ö × Ø Ù Ú Û Ü

Ý Þ à á â ã

ä å æ ç è é ê ë ì

í î ï ð ñ ò ó

ô õ

Magniton - Regular

Uppercase Characters

A B C D E F G H
I J K L M N O P
Q R S T U V W X
Y Z

Lowercase Characters

a b c d e f g h i j k l m n o p q r
s t u v w x y z

Numbers

0 1 2 3 4 5 6 7 8 9

Punctuation and Symbols

! " # \$ % & '
() * + , - . : ;

< = > ? [|] _
{ / } ! € £ ¥ §
© ª « ® º ² ³
, »

All Other Glyphs

À Á Â Ã Ä Å Æ Ç

È É Ê Ë Ì Í Î Ï Ñ Ò

Ó Ô Õ Ö × Ø Ù Ú Û

Ü Ý ß à á â ã ä å

æ ø è é ê ë ì í î

ï ñ ò ó ô õ ö ÷ ç

ù ú û ü ý ÿ Œ œ Š

š Ÿ ž ° ; _ _ ' "

‘ ” ” ” • … ‹ › £

€ – ≤ ≥ Th a d h

i l m n r t u b d

g h j k l y a b

c d e h i k l m n

o r s t u v x z

a d g h i j m n y

ſ w b c d e f g h

i j k l m n r t y

w t