



FONT SPECIFICATION

Shepila - Lovely Script

Shepila - Regular

Uppercase Characters

A B C D E F G H I
J K L M N O P Q R
S T U V W
X Y Z

Lowercase Characters

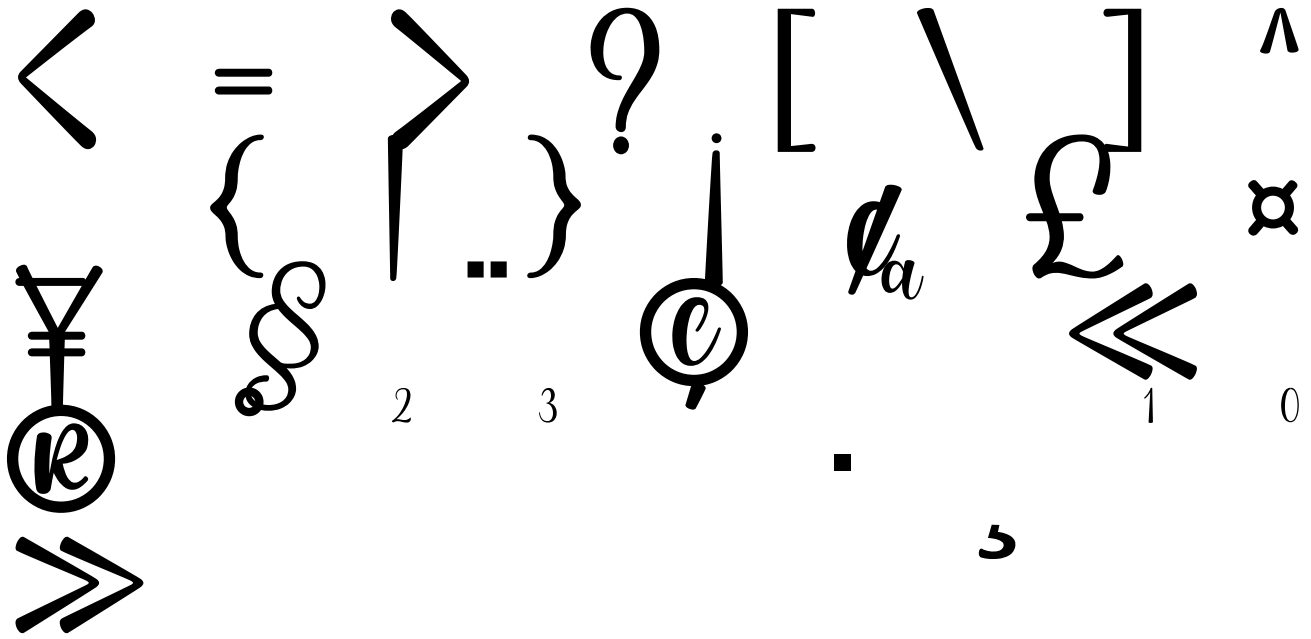
a b c d e f g h i j k l m n o p
q r s t u v w x y z

Numbers

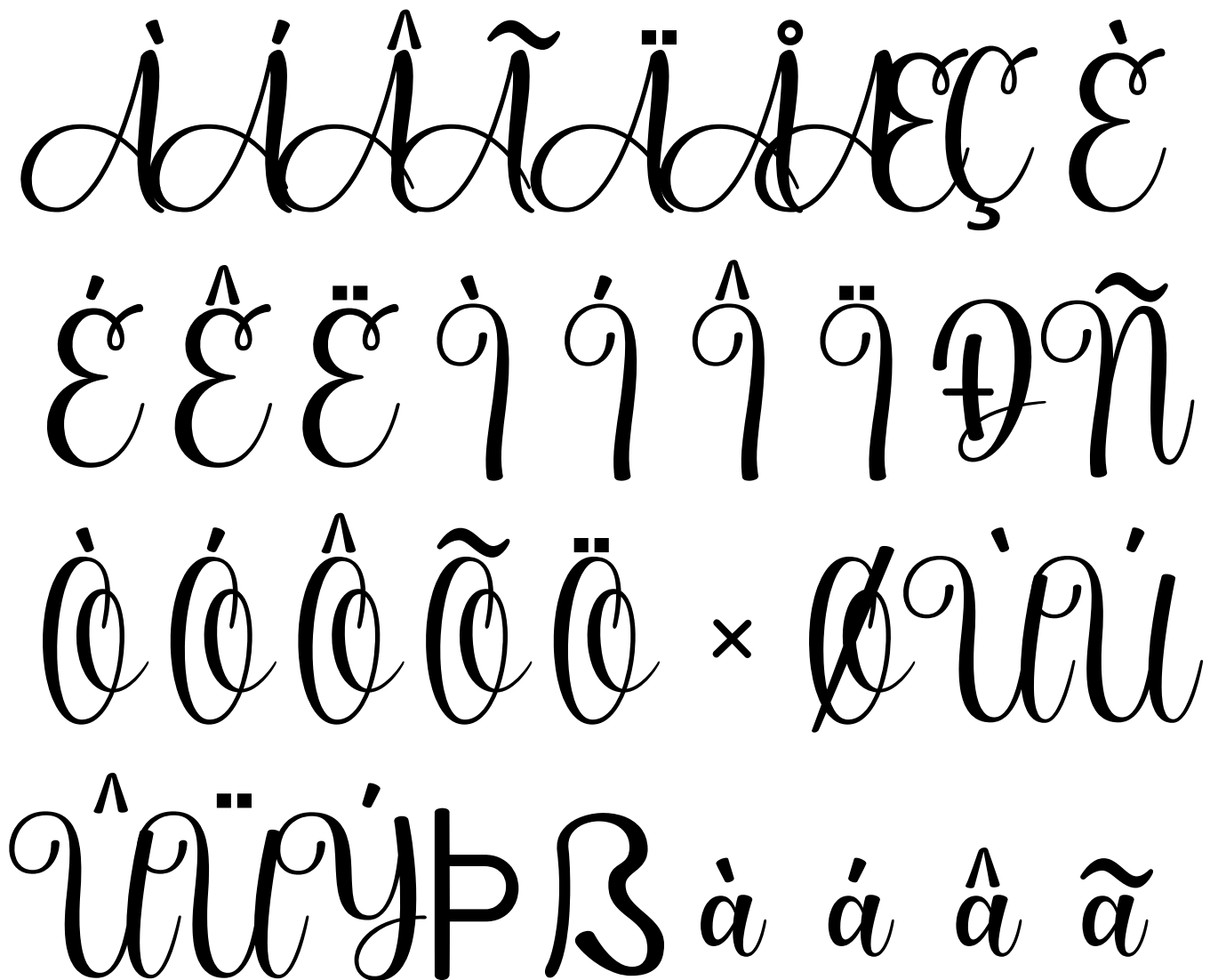
0 1 2 3 4 5 6 7 8 9

Punctuation and Symbols

| ” # \$ % & ’ () * + , - . : ;



All Other Glyphs



ä å æ ç è é ê ë ì

í î ï ñ ò ó ô õ ö

ø ù ú û ü ý þ ÿ ı

Œ œ Š š Ÿ Ž ž f ^

˘ ˙ ˚ ~ ; — — ‘

, , “ ” „ † • … <

> € ™ · dj hj kj lj mj

nj tj uy j K N M Y R G U j
tt ll ?