



FONT SPECIFICATION

Benjamin Franklin and Century Shaw

BenjaminFranklin - Regular

Uppercase Characters

**A B C D E F G H I J K L M N O P Q
R S T U V W X Y Z**

Lowercase Characters

**a b c d e f g h i j k l m n o p q
r s t u v w x y z**

Numbers

0 1 2 3 4 5 6 7 8 9

Punctuation and Symbols

**! " # \$ % & ' ()
* + , - . : ; < =
> ? [f] ^ _ |
¡ £ ¨ ¥ § "**

© ª « ff ® º ±
² ³ ´ ¶ · ¸ ¹ º
» ¼ ½ ¾

All Other Glyphs

À Á Â Ã Ä Å Æ Ç È

É Ê Ë Ì Í Î Ï Ð Ñ

Ò Ó Ô Õ Ö × Ù Ú

Û Ü Ý ß à á â ã

ä å æ ç è é ê ë ´

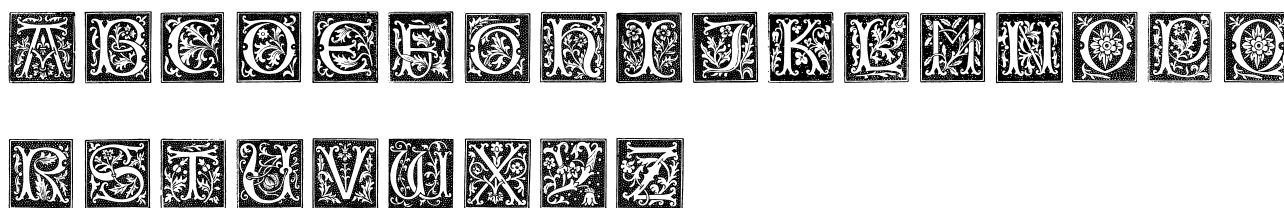
´ ˆ ¨ ñ ò ó ô õ

ö ÷ ù ú û ü ý

ÿ

XVI Century Shaw Woodcuts - Regular

Uppercase Characters



Lowercase Characters



Numbers

Punctuation and Symbols

All Other Glyphs

