



FONT SPECIFICATION

PN Crayonz

# PN Crayonz - Regular

## Uppercase Characters

A B C D E F G H I J K L M N O  
P Q R S T U V W X Y Z

## Lowercase Characters

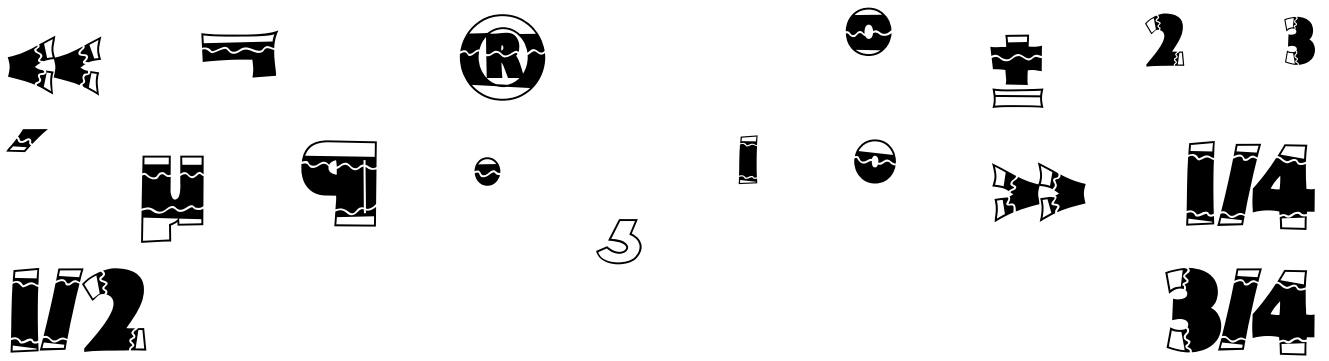
a b c d e f g h i j k l m n o p q r  
s t u v w x y z

## Numbers

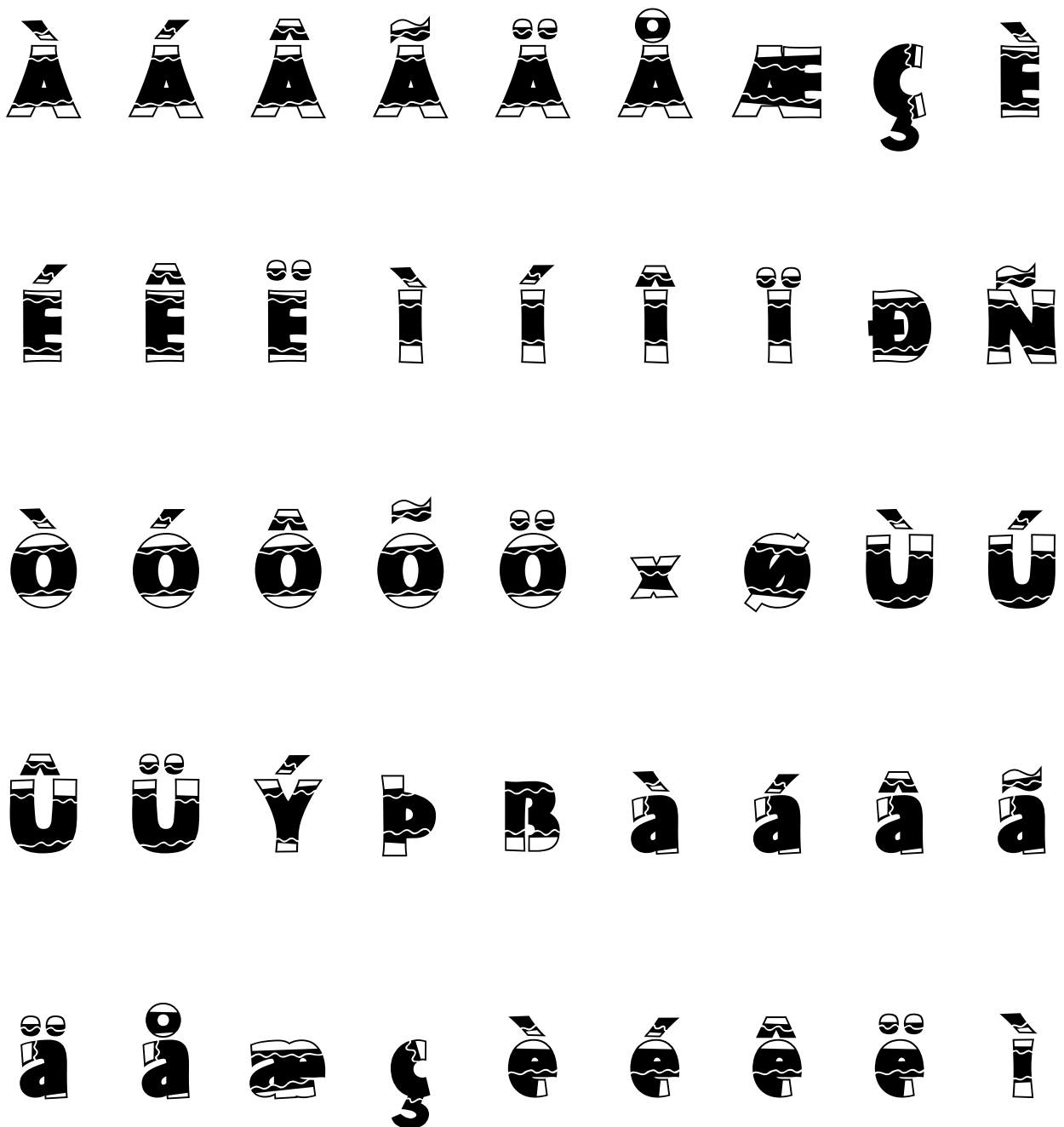
0 1 2 3 4 5 6 7 8 9

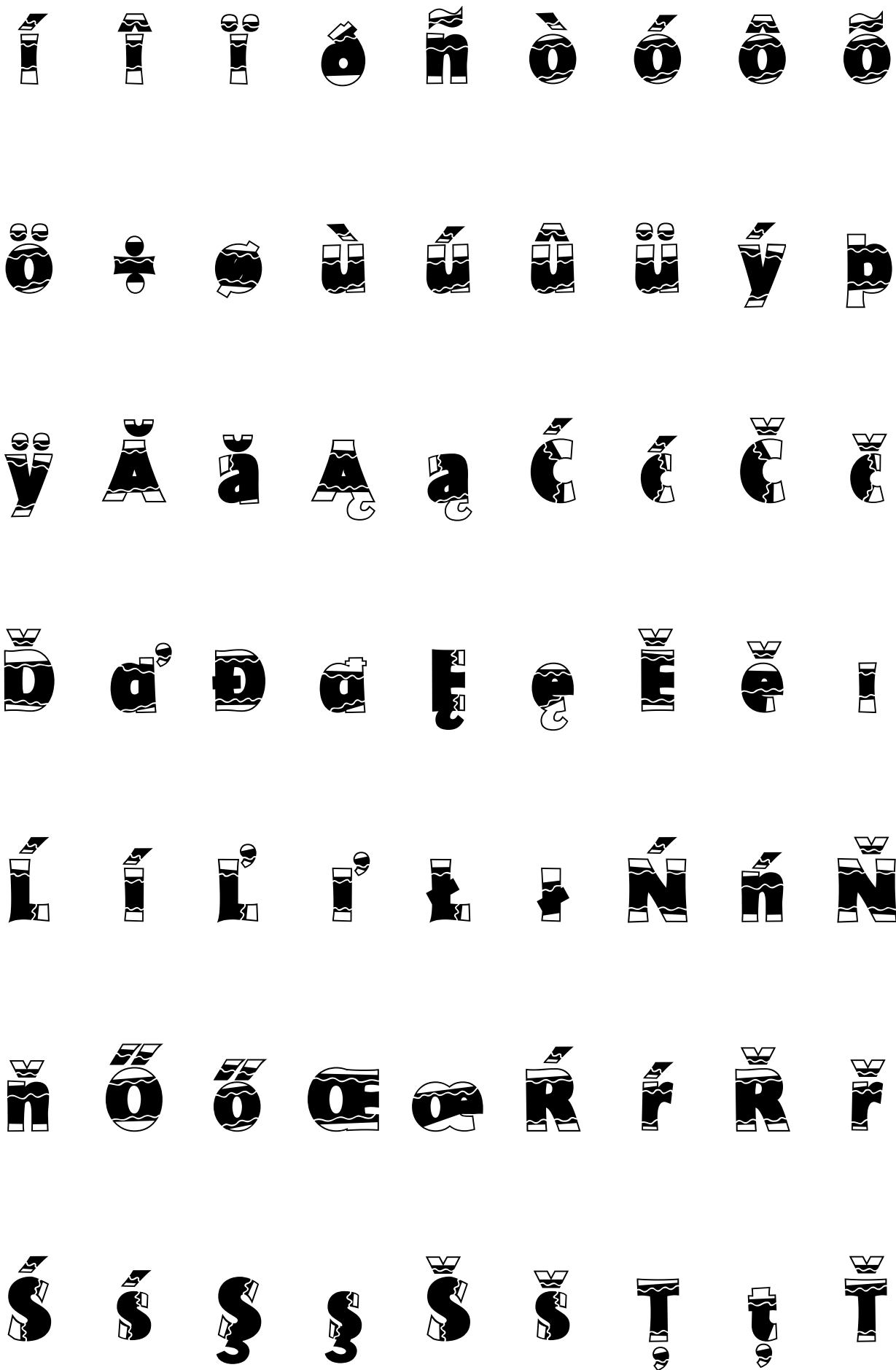
## Punctuation and Symbols

! " # \$ % & ' ( )  
\* + , - . : ;  
? @ [ \ ] ^ \_ { | } ~  
` € ¢ ¥ ¦ § ¨ ©



All Other Glyphs





t ũ ů Ū Ů Ŷ Ź ž ž

ı Ź ž ĵ ˆ ˘ ˙ ˚ ˛

˜ ˜ ˜ ˜ ˜ ˜ ˜ ˜ ˜

˜ ˜ ˜ ˜ ˜ ˜ ˜ ˜ ˜

€ ™ — ů Ů