



FONT SPECIFICATION

# Brocklyns - Graffiti Font

# Brocklyns Shadow - Regular

## Uppercase Characters

A B C D E F G H I J K L M N O P  
Q R S T U V W X Y Z

## Lowercase Characters

A B C D E F G H I J K L M N O P  
Q R S T U V W X Y Z

## Numbers

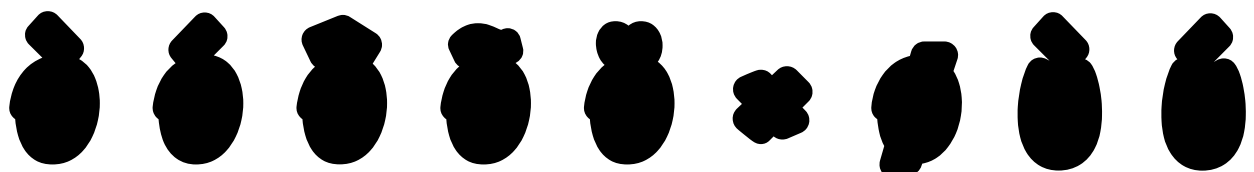
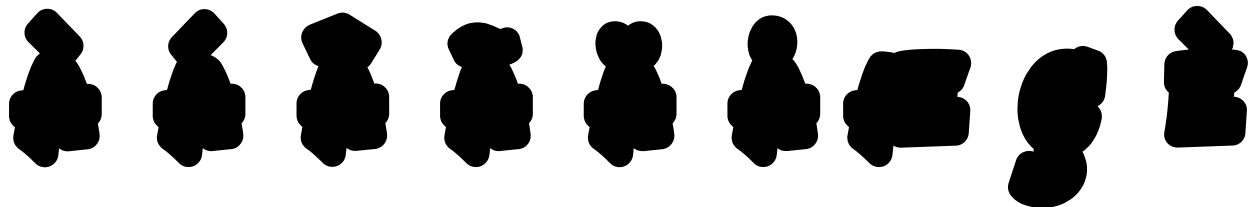
0 1 2 3 4 5 6 7 8 9

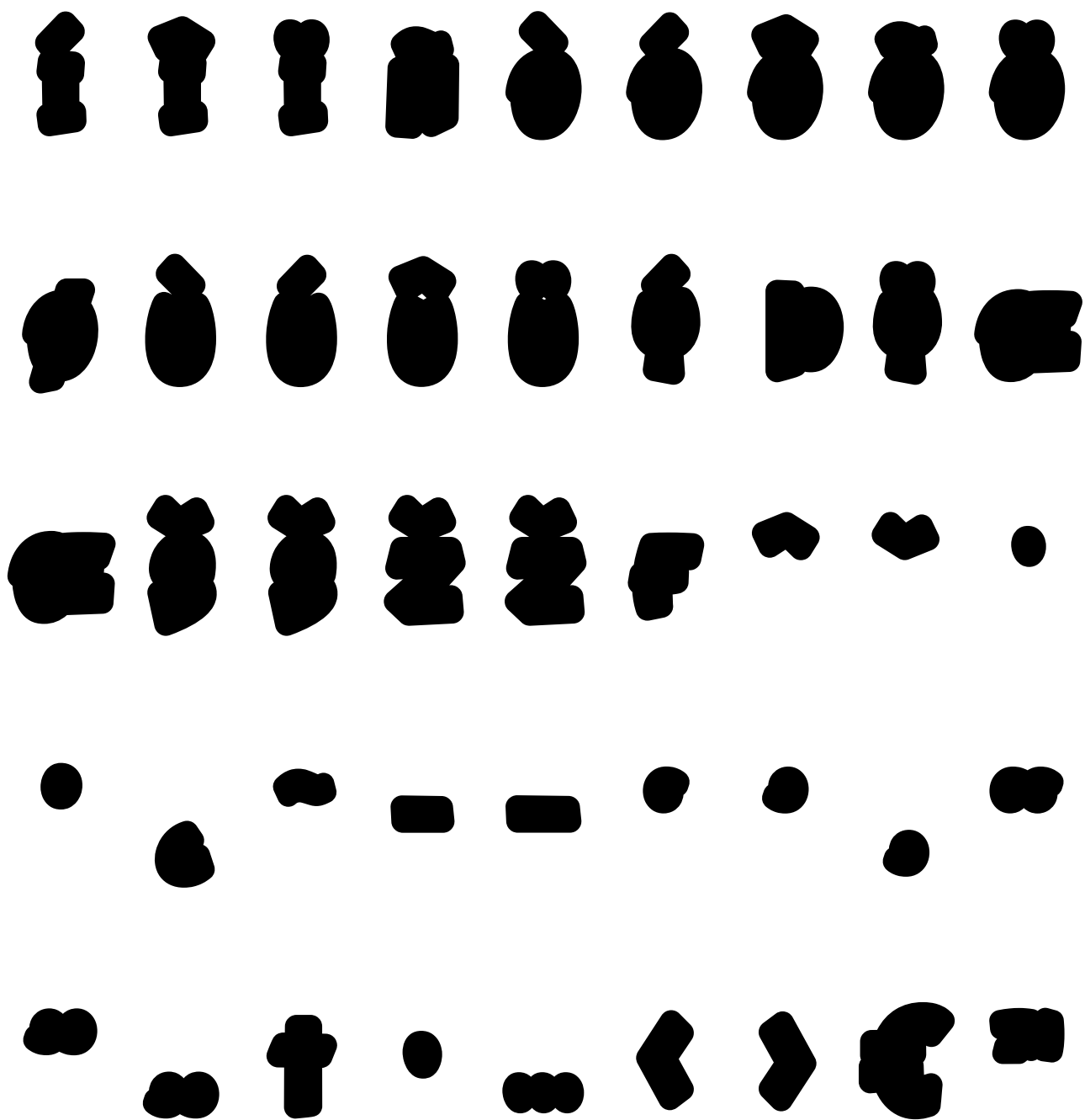
## Punctuation and Symbols

! " # \$ % & ' ( ) \* + , - . : ;  
< = > ? @ [ \ ] ^ \_ ` { | } ~  
¡ ¢ £ ¤ ¥ ¦ § ¨ © ª « ¬ ® ¯  
° ± ² ³ ´ µ ¶ · ¸ ¹ º » ¼ ½ ¾



All Other Glyphs





# Brocklyns - Regular

## Uppercase Characters

**A B C D E F G H I J K L M N O P  
Q R S T U V W X Y Z**

## Lowercase Characters

**A B C D E F G H I J K L M N O P  
Q R S T U V W X Y Z**

## Numbers

**0 1 2 3 4 5 6 7 8 9**

## Punctuation and Symbols

**! " # \$ % & ' ( ) \* +  
, - . : ; < = > ? [ \ ] ^ \_  
` { | } ¡ ¢ £ ¤ ¥ ¦ § ¨  
© ª « ® ¯ ° ± ² ³ ´ µ ¶ · ¸ ¹**

0



All Other Glyphs

À Á Â Ã Ä Å Æ Ç È

É Ê Ë Ì Í Î Ï Ð Ñ

Ò Ó Ô Õ Ö × Ø Ù Ú

Û Ü Ý Þ ß à á â ã

ä å æ ç è é ê ë ì

í î ï ñ ò ó ô õ ö  
ø ù ú û ü ý þ ÿ œ  
œ š š ž ž f ^ ˇ •  
• ¸ ~ - - ¸ ˘ ˙ “  
” „ † • … ‹ › € ™