



FONT SPECIFICATION

Nebenk XXV

# Nebenk - Regular

## Uppercase Characters

A B C D E F G H I J K L M N O  
P Q R S T U V W X Y Z

## Lowercase Characters

A B C D E F G H I J K L M N O P Q  
R S T U V W X Y Z

## Numbers

0 1 2 3 4 5 6 7 8 9

## Punctuation and Symbols

! " # \$ % & ' ( ) \*  
+ , - . : ; < = > ? [ \ ] ^ \_ { | } ¡ ¢ £  
¤ ¥ ¦ § ¨ © « ¬

® º ± ² ³ ´ ·  
¸ ¹ º » ¼ ½ ¾

All Other Glyphs

À Á Â Ã Ä Å Æ Ç È

É Ê Ë Ì Í Î Ï Ð Ñ

Ò Ó Ô Õ Ö × Ø Ù Ú

Û Ü Ý À Á Â Ã

Ä Å Æ Ç È É Ê Ë Ì

Í Î Ï ð Ñ Ò Ó Ô Õ

Ö ÷ Ø Ù Ú Û Ü Ý

ÿ ı Ł ł Œ œ Š š Ÿ

Ž ž ſ ˆ ˇ ˘ ˙ ˚ ˛

˜ “ – — ‘ ’ ‚ “ ”

„ † ‡ • … ‰ ‹ › ⁄

€ ™ - A B C D E F

G H I J K L M N O

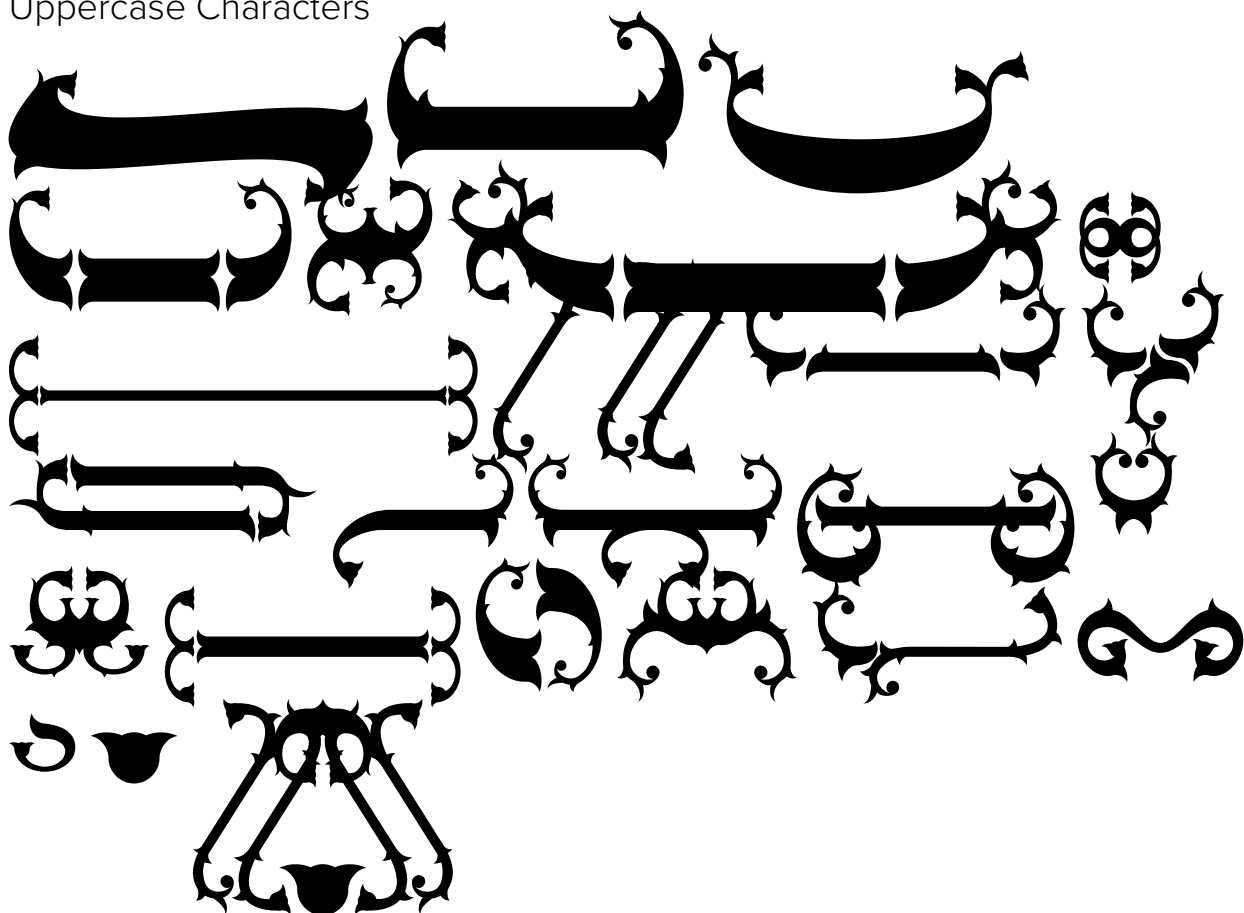
P Q R S T U V W X

Y Z

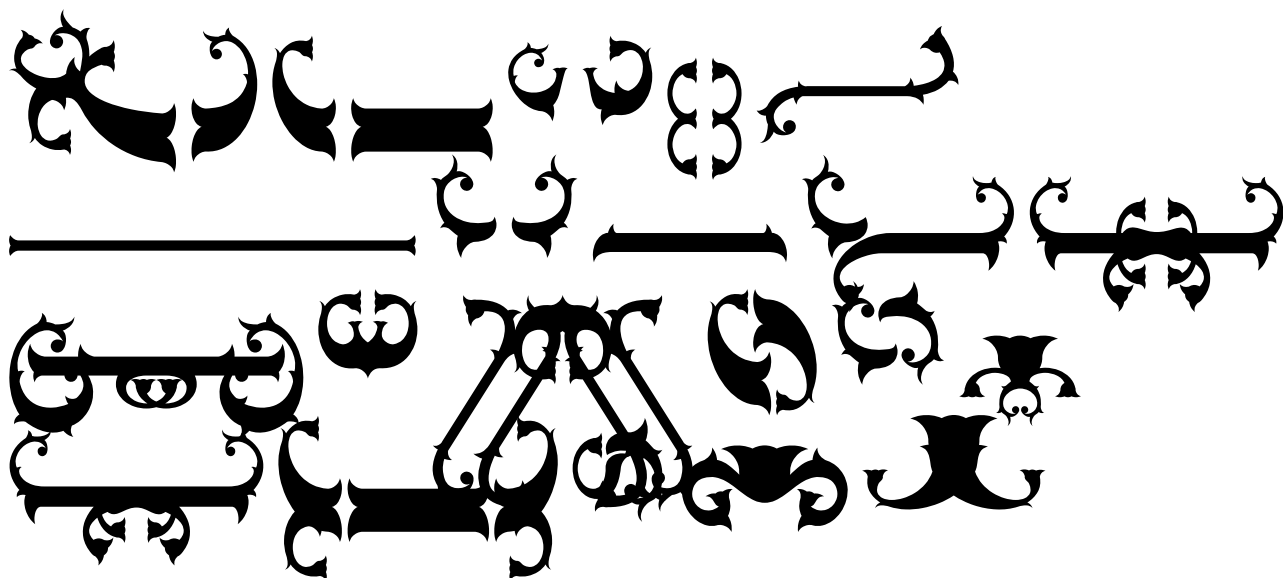
À Á

# Nebenk Tail - Regular

## Uppercase Characters

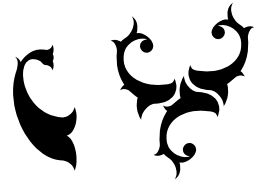
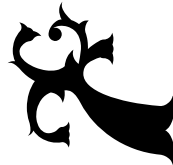


## Lowercase Characters

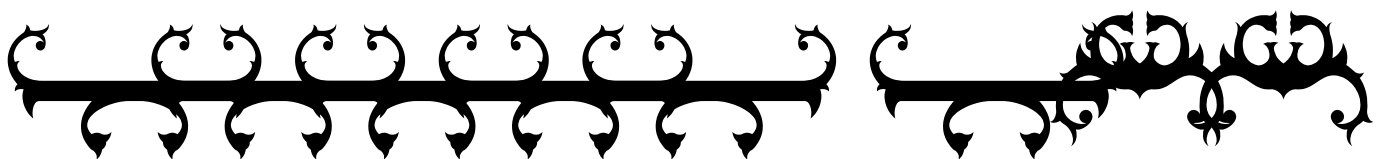
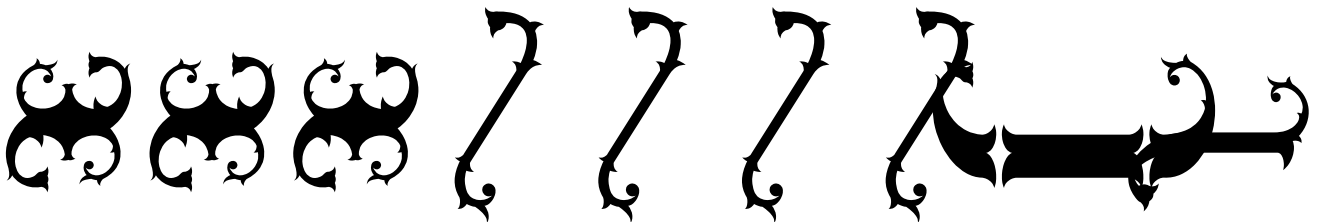
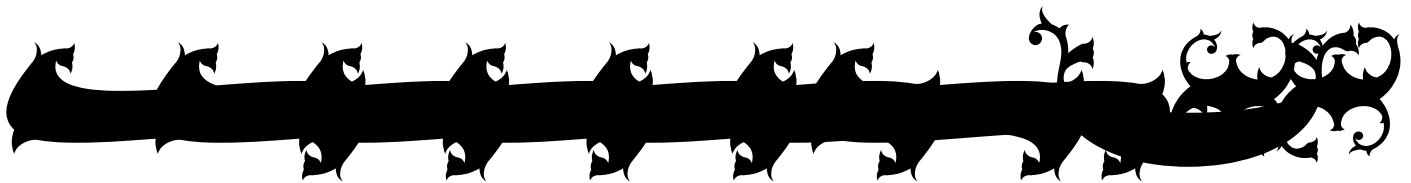


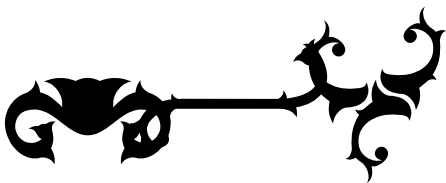
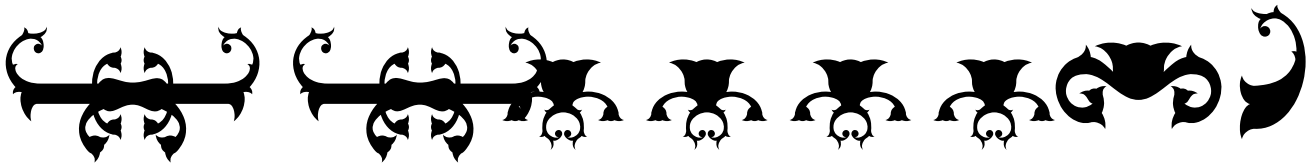
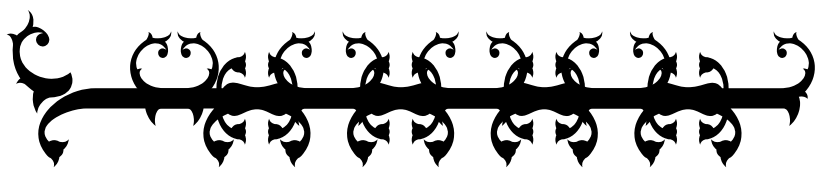
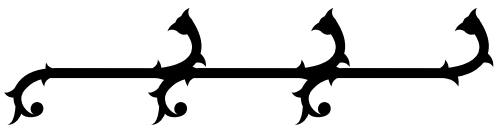
## Numbers

Punctuation and Symbols



All Other Glyphs







S

ſ

# nebenk - Bold

## Uppercase Characters

A B C D E F G H I J K L M N O  
P Q R S T U V W X Y Z

## Lowercase Characters

A B C D E F G H I J K L M N O P Q  
R S T U V W X Y Z

## Numbers

0 1 2 3 4 5 6 7 8 9

## Punctuation and Symbols

! " # \$ % & ' ( ) \*  
+ , - . : ; < = > ? @  
\ ] ^ \_ { | } ~ ¡ ¢ £  
¤ ¥ ¦ § ¨ © « ¬

® º † ² ³ ´ °  
ı I 0 » ¼ ½ ¾

All Other Glyphs

À Á Â Ã Ä Å Æ Ç È

É Ê Ë Ì Í Î Ï Ð Ñ

Ò Ó Ô Õ Ö × Ø Ù Ú

Û Ü Ý À Á Â Ã

Ä Å Æ Ç È É Ê Ë Ì

Í Î Ï ð Ñ Ò Ó Ô Õ

Ö ÷ Ø Ù Ú Û Ü Ý

ÿ ı Ł ł Œ œ Š š Ÿ

Ž ž ſ ˆ ˇ ˘ ˙ ˚

¸ “ — — ˆ ˙ ˚ ˛ ˜

¸ † ‡ • … ‰ ‹ › ⁄

€ ™ - A B C D E F

G H I J K L M N O

P Q R S T U V W X

Y Z

À Á