



FONT SPECIFICATION  
China Town

# China Town - Regular

## Uppercase Characters

A B C D E F G H I J K L M N O P Q R  
S T U V W X Y Z

## Lowercase Characters

A B C D E F G H I J K L M N O P Q R  
S T U V W X Y Z

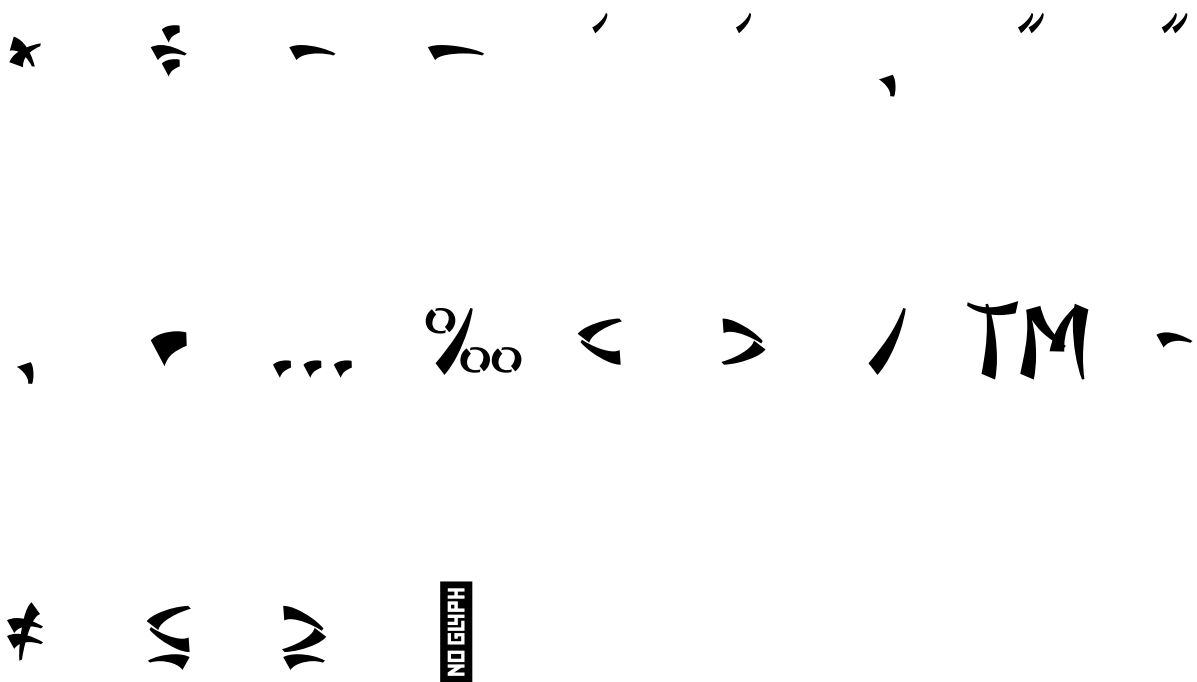
## Numbers

0 1 2 3 4 5 6 7 8 9

## Punctuation and Symbols

! " # \$ % & ' ( ) \* +  
, - . : ; < = > ? [ \ ]  
^ \_ { | } ¡ « ° ± ·  
>>

All Other Glyphs



# Adobado - Regular

## Uppercase Characters

A B C D E F G H I J K L M N O P Q R  
S T U V W X Y Z

## Lowercase Characters

A B C D E F G H I J K L M N O P Q R  
S T U V W X Y Z

## Numbers

0 1 2 3 4 5 6 7 8 9

## Punctuation and Symbols

! " # \$ % & ' ( ) \* +  
, - . : ; < = > ? [ \ ]  
^ \_ { | } ¡ « ° ± ·  
>>

All Other Glyphs

✱   ✱   ‾   ‾   ′   ′   ′   ′   ′  
′   ′   ′   ′   ′   ′   ′   ′   ′  
✱   ✱   ✱   NO GLYPH