



FONT SPECIFICATION

Poesaka

# Poesaka - Regular

## Uppercase Characters

A B C D E F G H I J K L  
M N O P Q R S T U V  
W X Y Z

## Lowercase Characters

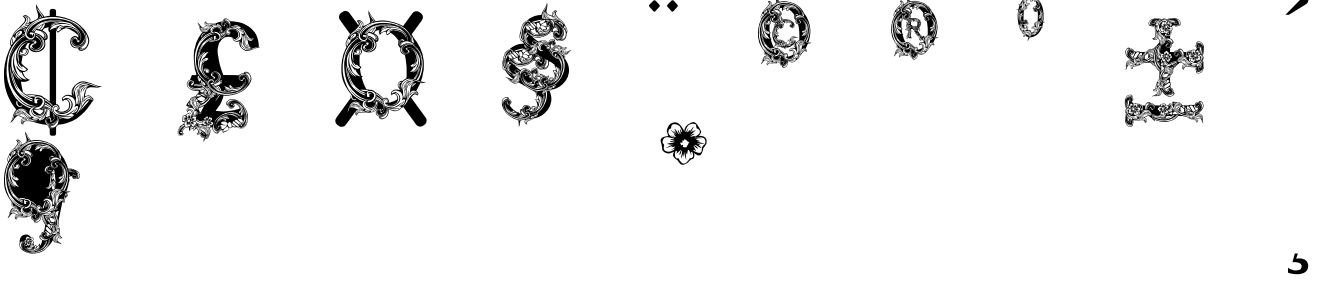
a b c d e f g h i j k l m n  
o p q r s t u v w x y z

## Numbers

0 1 2 3 4 5 6 7 8 9

## Punctuation and Symbols

! " # \$ % & ' ( ) \*  
, - . : ; < = > ? @  
[ \ ] ^ \_ ` { | } ~



All Other Glyphs

