

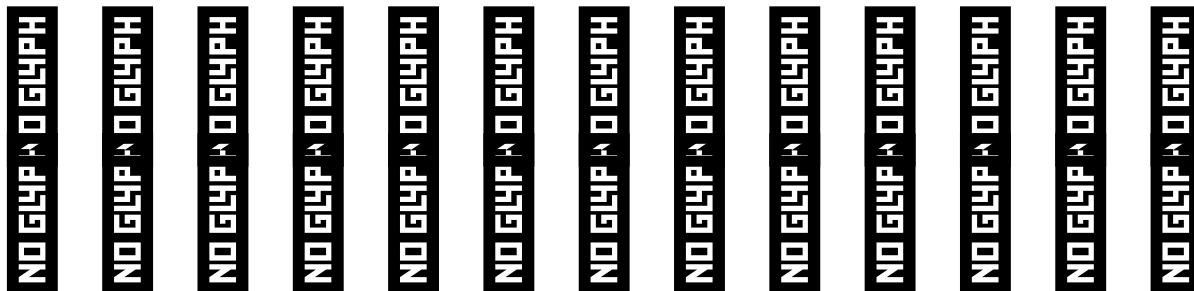


FONT SPECIFICATION

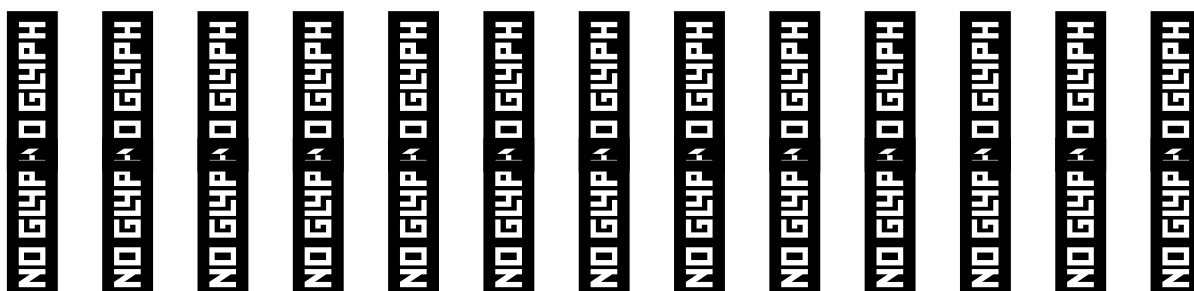
# Lattouf - Arabic Font

# Lattouf Normal - Regular

## Uppercase Characters



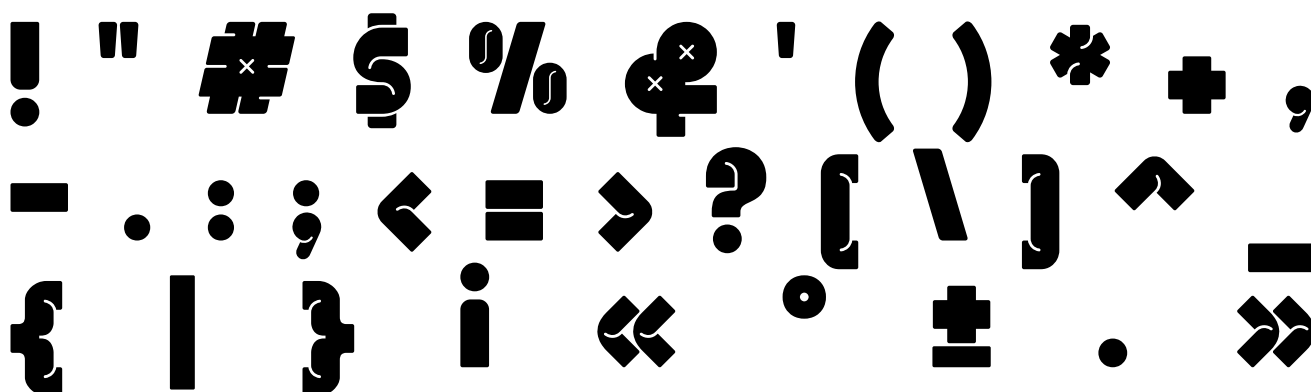
## Lowercase Characters



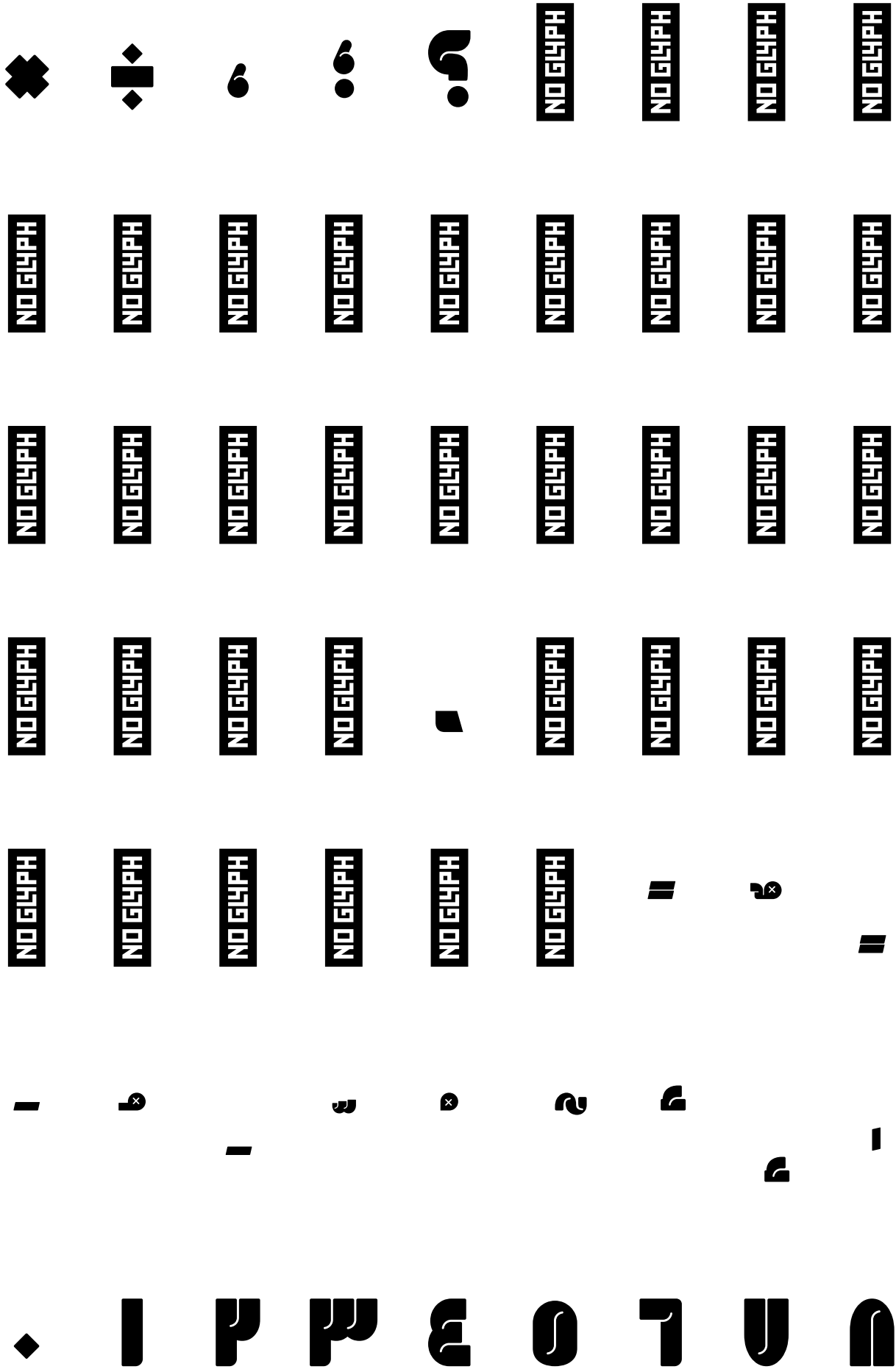
## Numbers

0 1 2 3 4 5 6 7 8 9

## Punctuation and Symbols



## All Other Glyphs



9 % , , \* C C' NO GLYPH

NO GLYPH NO GLYPH C NO GLYPH - - ' , ,

“ ” „ • … % ‹ › /

€ - # ‹ › . † ‡

§ ¶ ¸ ¹ º » ¼ ½ ¾

¿ À Á Â Ã Ä Å Æ Ç

È É Ê Ë Ì Í Î Ï

أ اللام م هـ و هـ  
◊ ◊ ◊ ◊ ◊ ◊ ◊ ◊ ◊ ◊

ب ب ا ا ا ا ا ا ا ا  
◊ ◊ ◊ ◊ ◊ ◊ ◊ ◊ ◊ ◊

ج ج ج ج ج ج ج ج ج ج  
◊ ◊ ◊ ◊ ◊ ◊ ◊ ◊ ◊ ◊

د د د د د د د د د د  
◊ ◊ ◊ ◊ ◊ ◊ ◊ ◊ ◊ ◊

ذ ذ ذ ذ ذ ذ ذ ذ ذ ذ  
◊ ◊ ◊ ◊ ◊ ◊ ◊ ◊ ◊ ◊

ط ط ط ط ط ط ط ط ط ط  
◊ ◊ ◊ ◊ ◊ ◊ ◊ ◊ ◊ ◊

ظ ظ ظ ظ ظ ظ ظ ظ ظ ظ  
◊ ◊ ◊ ◊ ◊ ◊ ◊ ◊ ◊ ◊

ك كك كك كك ق ق ق ف ف ف

ل ل ل م م م ن ن ن

ه ه ه و و ي ي ي ي ي ي ي

ي ي ي ي ي ي ي NO GLYPH