

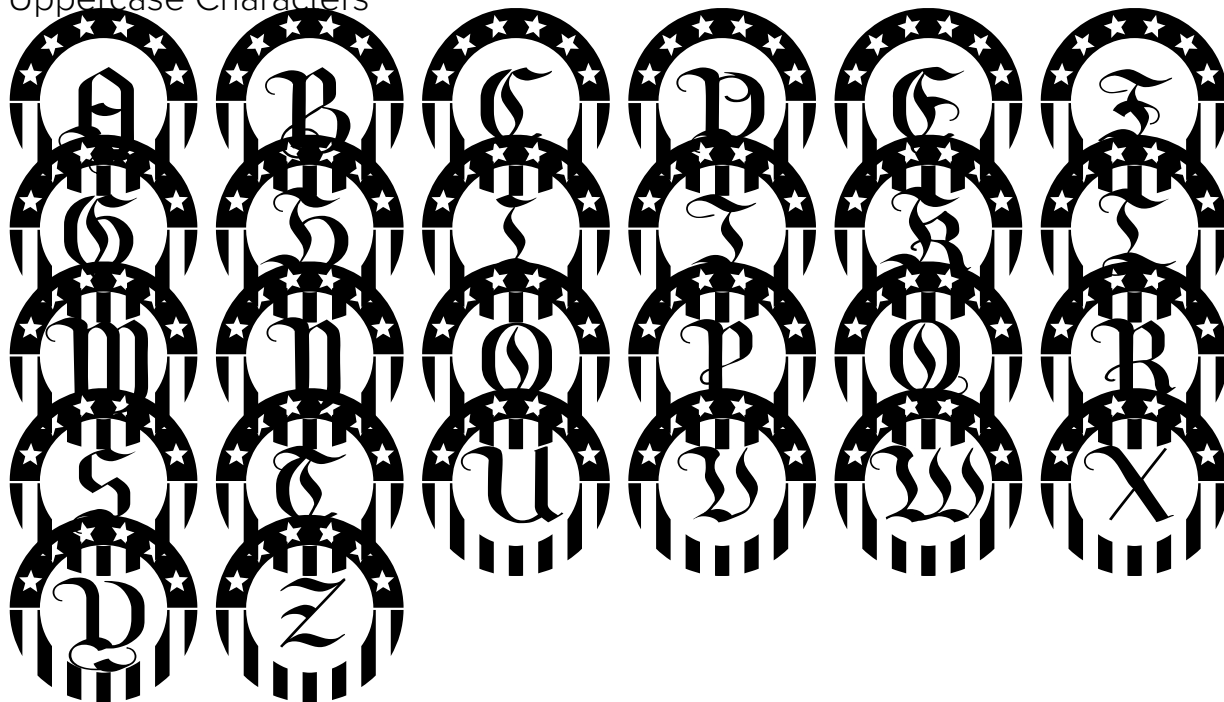


FONT SPECIFICATION

PN Canton Constitution

PN Canton Constitution - Regular

Uppercase Characters



Lowercase Characters

a b c d e f g h i j k l m n o p q r s t u v w
x y z

Numbers

0 1 2 3 4 5 6 7 8 9

Punctuation and Symbols

! " # \$ % & ' () * + , - .

: ; < = > ? [\] ^ _ { | }
 i ¢ £ ¤ ¥ ¦ § ¨ © ª « ¬
 ® º ± ² ³ ´ µ ¶ · ¸ ¹ º
 » ¼ ½ ¾

All Other Glyphs

À Á Â Ã Ä Å Æ Ç È

É Ê Ë Ì Í Î Ï Ð Ñ





Ò Ó Ô Õ Ö × Ø Ù Ú

Û Ü Ý Þ ß à á â ã

ä å æ ç è é ê ë ì





í î ï ð ñ ò ó ô õ

ö ÷ ø ù ú û ü ý þ

ÿ  ä  a  é  ě

 d'  ð  e  ě ı

 í  r'  †  ú 

ñ  ó  œ  r'  ř

Š š Ś ś Š š Œ œ Œ œ

Œ œ Ů ů Ů ů Ž ž Ž ž

ž ž f ^ ˇ ˘ ˙ ˚

˘ ˙ ˚ ˛ ˜ ˝ ˚ ˛ ˜ ˝ ˚ ˛ ˜ ˝

” „ † ‡ • … ‰ ‹ ›

/ € ™ - fi fl