



FONT SPECIFICATION

# PN Balloony

# PN Balloony - Regular

## Uppercase Characters

A B C D E F G H I J K L M N O P  
Q R S T U V W X Y Z

## Lowercase Characters

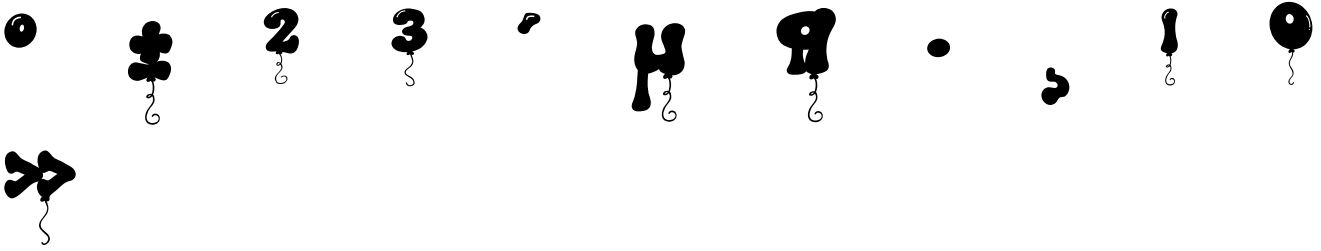
A B C D E F G H I J K L M N O P  
Q R S T U V W X Y Z

## Numbers

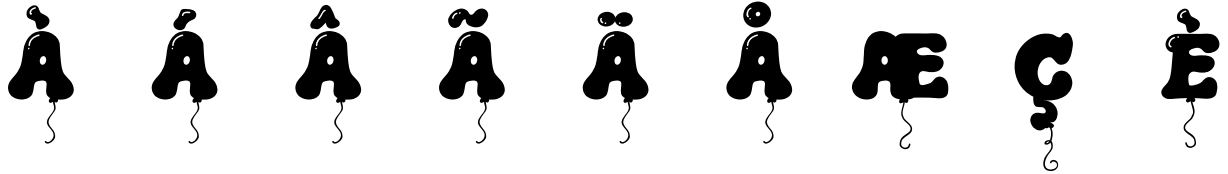
0 1 2 3 4 5 6 7 8 9

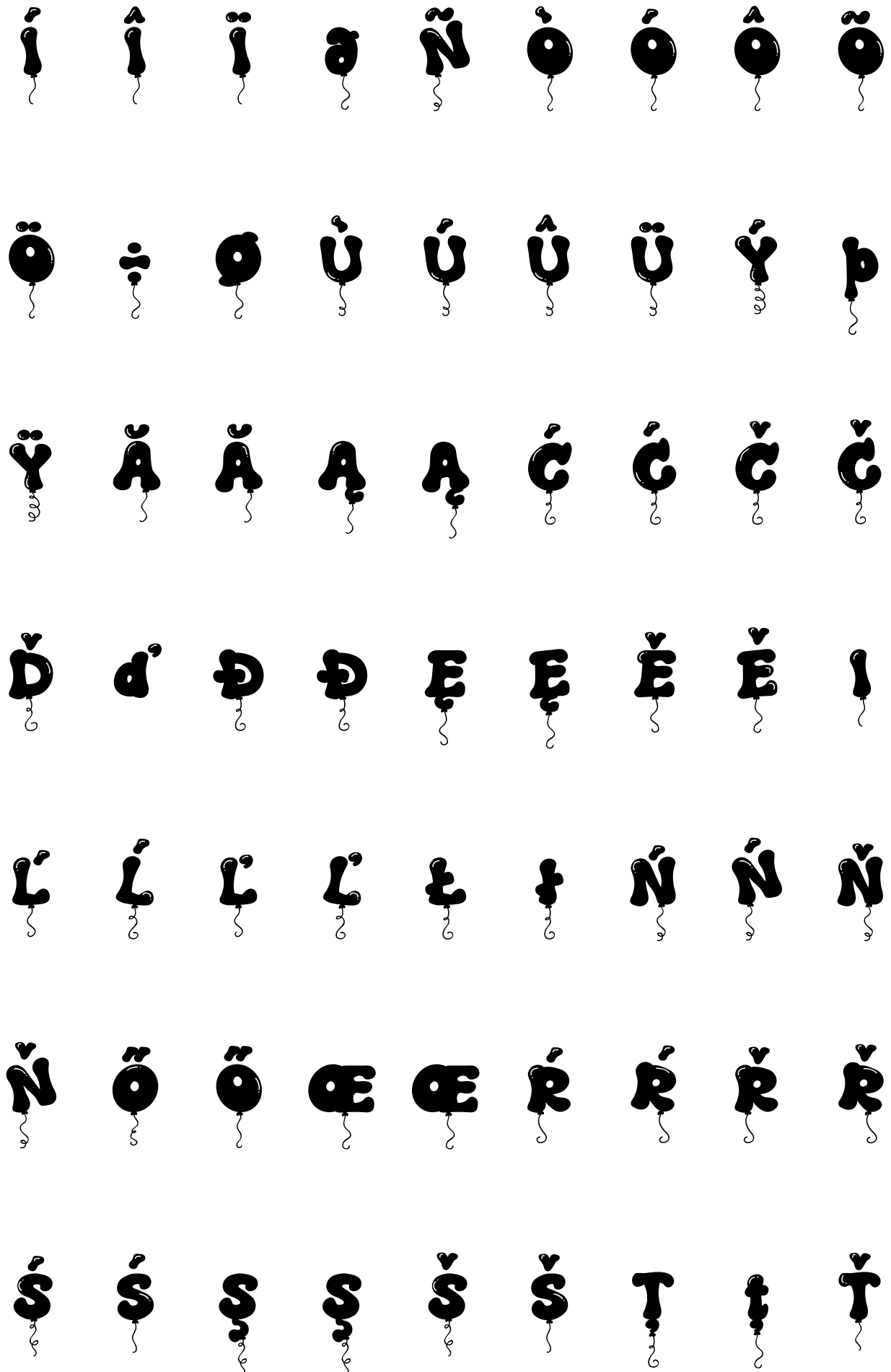
## Punctuation and Symbols

! " # \$ % & ' ( ) \* +  
, - . : ; < = > ? [ \ ] ^ \_  
` { | } ~ ¡ ¢ £ ¤ ¥ ¦ § ¨ © ª « ¬ ® ¯ ° ± ² ³ ´ µ ¶ · ¸ ¹ º » ¼ ½ ¾



All Other Glyphs





İ Ő Ű Ū Ŭ Ÿ Ž ž Ž

ž Ž Ž ſ ˆ ˇ ˘ ˙ ˚

˛ ˜ ˝ ˚ ˛ ˙ ˘ ˚

” „ † ‡ ◼ … % ‹ ›

/ € ™ ˆ

FI FL